

ELF6811S

Stationary Drainable Louver
Extruded Aluminum

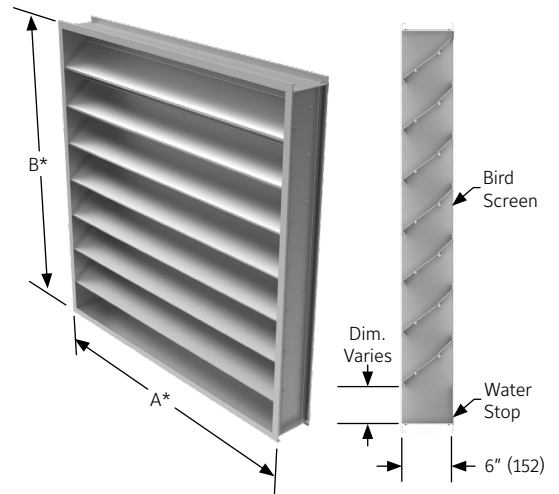


APPLICATION

The ELF6811S is a 6" deep extruded aluminum drainable stationary louver designed to protect air intake and exhaust opening on the exterior walls. This louver is designed with a drainable gutter system channeling water from the blades to downspouts in the jambs, where water is exhausted out of the front of the louver.

STANDARD CONSTRUCTION

Frame	6" (152) deep, 6063T6 extruded aluminum with .125" (3.2) nominal wall thickness. Caulking surfaces provided.
Blades	6063T6 extruded aluminum with .080" (2.0) nominal wall thickness. K-style blades (formerly "stormproof") are positioned at 45° angle and spaced approximately 6" (152) center to center.
Screen	3/4" x .051" (19 x 1.3) expanded, flattened aluminum bird screen in removable frame. Screen adds approximately 1/2" (13) to louver depth.
Finish	Mill.
Minimum Size	12"w x 12"h (305 x 305).
Approximate Shipping Weight	5 lbs. per sq. ft.
Maximum Factory Assembly Size	Shall be 64 sq. ft. (6m ²) per section, not to exceed 120" wide and 90" high (3048 and 2286) or 90" wide and 120" high (2286 and 3048). Louvers larger than the maximum factory assembly size will require field assembly of smaller sections.



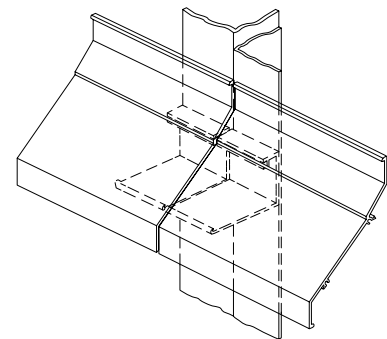
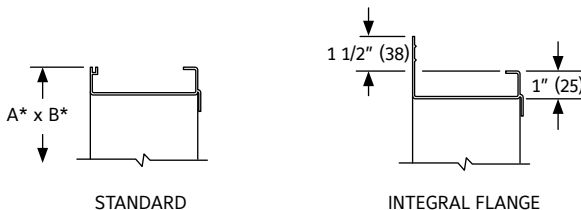
YEAR LIMITED WARRANTY

ISO9001 CERTIFIED

FEATURES

- ▶ Hidden mullions for attractive appearance
- ▶ All aluminum construction for low maintenance and high resistance to corrosion
- ▶ Low pressure drop with high free area

FRAME CONSTRUCTION



Hidden Mullion Detail

VARIATIONS

Variations to the basic design of the louver are available at additional cost. They include:

- ▶ Extended sill
- ▶ Hinged frame
- ▶ Front or rear security bars
- ▶ Filter racks
- ▶ A variety of bird and insect screens
- ▶ Optional finishes available at additional cost. Please see [Paint Finishes and Color Guide](#) and [Finish Type Model Chart](#) for more details. Contact louversales@ruskin.com with questions. Consult Ruskin for other special requirements.

NOTES:

- Dimensions in inches, parenthesis () indicate millimeters.
- Units can be furnished actual size or with size deducts.

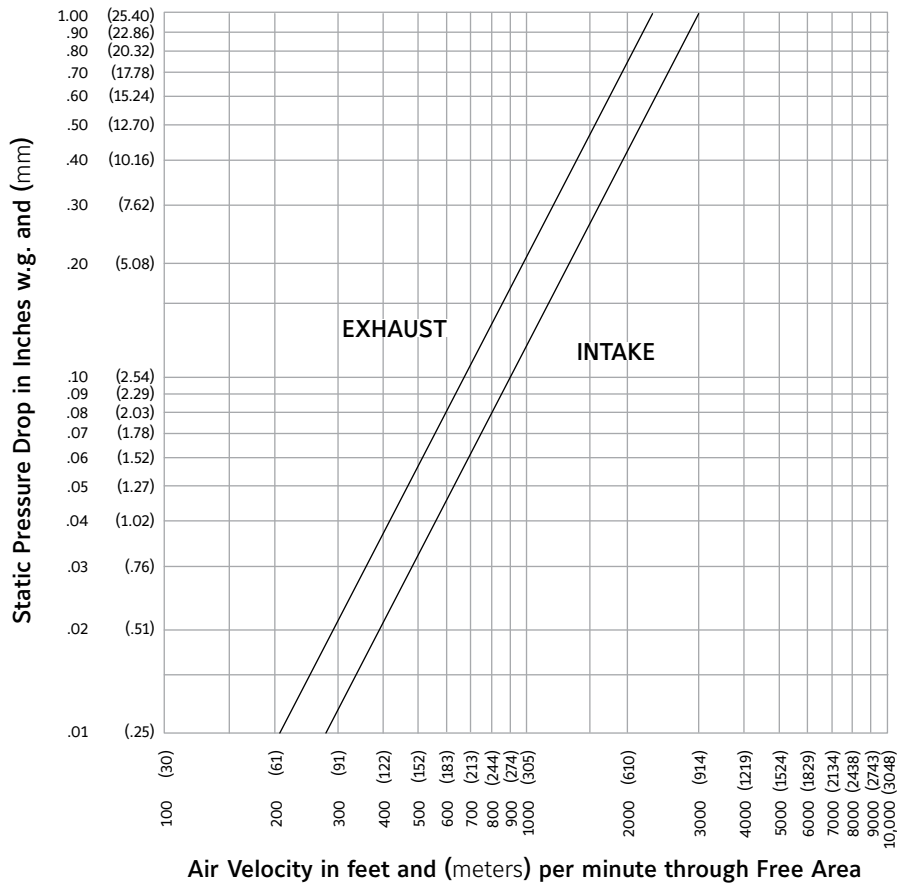
FREE AREA GUIDE

Free Area Guide shows free area in ft² and m² for various sizes of ELF6811S.

Width – Inches And Meters

	12	18	24	30	36	42	48	54	60	66	72	78	84	90	96	102	108	114	120
	0.30	0.45	0.60	0.75	0.90	1.05	1.20	1.35	1.50	1.65	1.80	1.95	2.10	2.25	2.40	2.55	2.70	2.85	3.00
12	0.18	0.29	0.39	0.50	0.61	0.72	0.83	0.94	1.05	1.16	1.26	1.37	1.48	1.59	1.70	1.81	1.92	2.02	2.13
0.30	0.02	0.03	0.04	0.05	0.06	0.07	0.08	0.09	0.10	0.11	0.12	0.13	0.14	0.15	0.16	0.17	0.18	0.19	0.20
18	0.43	0.69	0.95	1.21	1.47	1.73	1.99	2.25	2.51	2.77	3.03	3.29	3.55	3.81	4.07	4.33	4.60	4.86	5.12
0.45	0.04	0.06	0.09	0.11	0.14	0.16	0.19	0.21	0.23	0.26	0.28	0.31	0.33	0.35	0.38	0.40	0.43	0.45	0.48
24	0.67	1.09	1.50	1.91	2.32	2.74	3.15	3.56	3.97	4.39	4.80	5.21	5.63	6.04	6.45	6.86	7.28	7.69	8.10
0.60	0.06	0.10	0.14	0.18	0.22	0.25	0.29	0.33	0.37	0.41	0.45	0.48	0.52	0.56	0.60	0.64	0.68	0.72	0.75
30	0.92	1.49	2.05	2.62	3.18	3.75	4.31	4.87	5.44	6.00	6.57	7.13	7.70	8.26	8.83	9.39	9.96	10.52	11.08
0.75	0.09	0.14	0.19	0.24	0.30	0.35	0.40	0.45	0.51	0.56	0.61	0.66	0.72	0.77	0.82	0.87	0.93	0.98	1.03
36	1.17	1.89	2.60	3.32	4.04	4.75	5.47	6.19	6.90	7.62	8.34	9.05	9.77	10.49	11.20	11.92	12.64	13.35	14.07
0.90	0.11	0.18	0.24	0.31	0.38	0.44	0.51	0.58	0.64	0.71	0.78	0.84	0.91	0.98	1.04	1.11	1.18	1.24	1.31
42	1.42	2.29	3.16	4.03	4.89	5.76	6.63	7.50	8.37	9.24	10.10	10.97	11.84	12.71	13.58	14.45	15.32	16.18	17.05
1.05	0.13	0.21	0.29	0.37	0.45	0.54	0.62	0.70	0.78	0.86	0.94	1.02	1.10	1.18	1.26	1.34	1.42	1.50	1.59
48	1.67	2.69	3.71	4.73	5.75	6.77	7.79	8.81	9.83	10.85	11.87	12.89	13.91	14.93	15.95	16.97	18.00	19.02	20.04
1.20	0.16	0.25	0.35	0.44	0.53	0.63	0.72	0.82	0.91	1.01	1.10	1.20	1.29	1.39	1.48	1.58	1.67	1.77	1.86
54	1.92	3.09	4.26	5.43	6.61	7.78	8.95	10.12	11.30	12.47	13.64	14.81	15.99	17.16	18.33	19.50	20.68	21.85	23.02
1.35	0.18	0.29	0.40	0.50	0.61	0.72	0.83	0.94	1.05	1.16	1.27	1.38	1.49	1.60	1.70	1.81	1.92	2.03	2.14
60	2.17	3.49	4.81	6.14	7.46	8.79	10.11	11.44	12.76	14.08	15.41	16.73	18.06	19.38	20.71	22.03	23.36	24.68	26.00
1.50	0.20	0.32	0.45	0.57	0.69	0.82	0.94	1.06	1.19	1.31	1.43	1.56	1.68	1.80	1.93	2.05	2.17	2.30	2.42
66	2.41	3.89	5.37	6.84	8.32	9.80	11.27	12.75	14.22	15.70	17.18	18.65	20.13	21.61	23.08	24.56	26.04	27.51	28.99
1.65	0.22	0.36	0.50	0.64	0.77	0.91	1.05	1.19	1.32	1.46	1.60	1.73	1.87	2.01	2.15	2.28	2.42	2.56	2.70
72	2.66	4.29	5.92	7.55	9.18	10.80	12.43	14.06	15.69	17.32	18.95	20.57	22.20	23.83	25.46	27.09	28.72	30.34	31.97
1.80	0.25	0.40	0.55	0.70	0.85	1.00	1.16	1.31	1.46	1.61	1.76	1.91	2.06	2.22	2.37	2.52	2.67	2.82	2.97
78	2.91	4.69	6.47	8.25	10.03	11.81	13.59	15.37	17.15	18.93	20.71	22.49	24.27	26.05	27.83	29.61	31.40	33.18	34.96
1.95	0.27	0.44	0.60	0.77	0.93	1.10	1.26	1.43	1.59	1.76	1.93	2.09	2.26	2.42	2.59	2.75	2.92	3.09	3.25
84	3.16	5.09	7.02	8.96	10.89	12.82	14.75	16.69	18.62	20.55	22.48	24.41	26.35	28.28	30.21	32.14	34.08	36.01	37.94
2.10	0.29	0.47	0.65	0.83	1.01	1.19	1.37	1.55	1.73	1.91	2.09	2.27	2.45	2.63	2.81	2.99	3.17	3.35	3.53
90	3.41	5.49	7.58	9.66	11.75	13.83	15.91	18.00	20.08	22.17	24.25	26.33	28.42	30.50	32.59	34.67	36.76	38.84	40.92
2.25	0.32	0.51	0.70	0.90	1.09	1.29	1.48	1.67	1.87	2.06	2.26	2.45	2.64	2.84	3.03	3.22	3.42	3.61	3.81
96	3.66	5.89	8.13	10.37	12.60	14.84	17.07	19.31	21.55	23.78	26.02	28.25	30.49	32.73					
2.40	0.34	0.55	0.76	0.96	1.17	1.38	1.59	1.80	2.00	2.21	2.42	2.63	2.84	3.04					
102	3.91	6.29	8.68	11.07	13.46	15.85	18.23	20.62	23.01	25.40	27.79	30.17	32.56	34.95					
2.55	0.36	0.58	0.81	1.03	1.25	1.47	1.70	1.92	2.14	2.36	2.58	2.81	3.03	3.25					
108	4.15	6.69	9.23	11.77	14.31	16.85	19.39	21.93	24.47	27.01	29.55	32.09	34.63	37.17					
2.70	0.39	0.62	0.86	1.09	1.33	1.57	1.80	2.04	2.28	2.51	2.75	2.98	3.22	3.46					
114	4.40	7.09	9.79	12.48	15.17	17.86	20.55	23.25	25.94	28.63	31.32	34.01	36.71	39.40					
2.85	0.41	0.66	0.91	1.16	1.41	1.66	1.91	2.16	2.41	2.66	2.91	3.16	3.41	3.66					
120	4.65	7.50	10.34	13.18	16.03	18.87	21.72	24.56	27.40	30.25	33.09	35.94	38.78	41.62					
3.00	0.43	0.70	0.96	1.23	1.49	1.75	2.02	2.28	2.55	2.81	3.08	3.34	3.61	3.87					

PRESSURE DROP



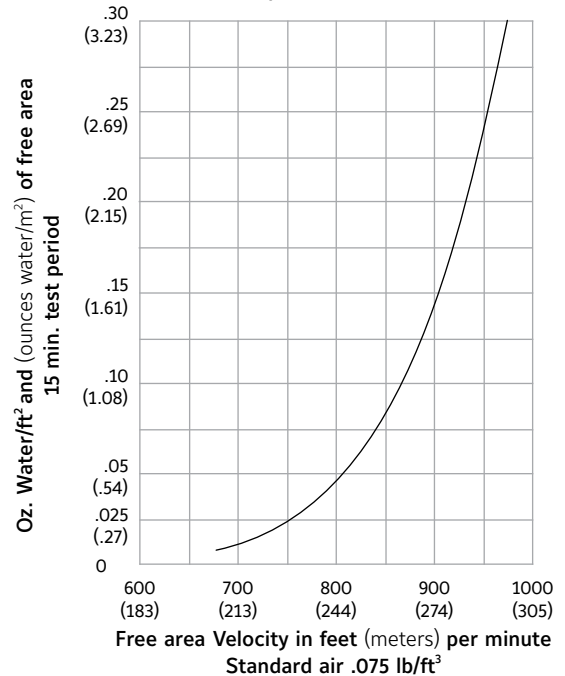
Ratings do not include the effect of a bird screen.

PERFORMANCE DATA

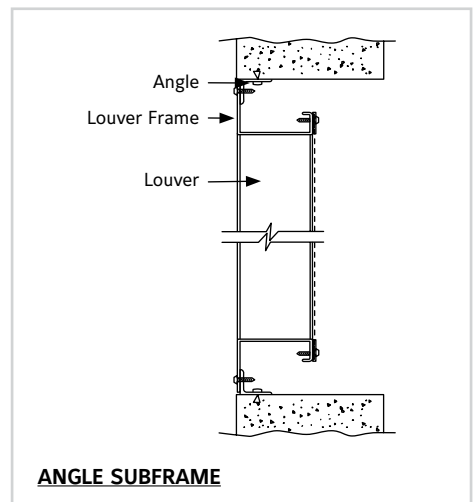
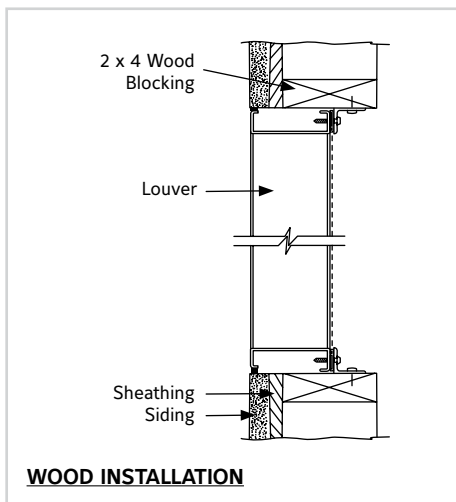
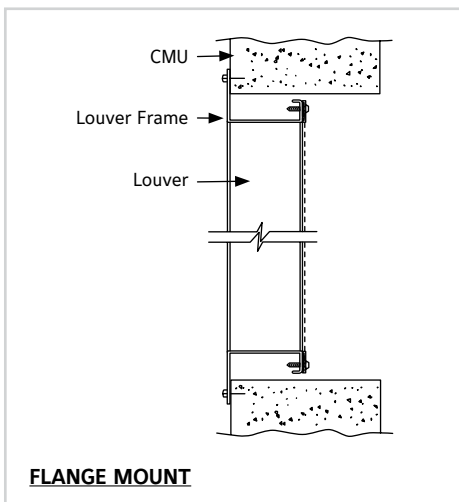
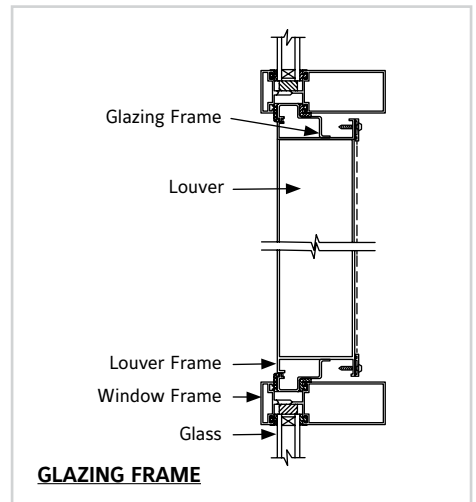
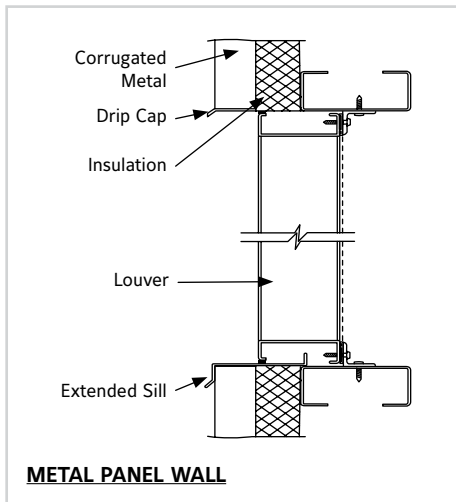
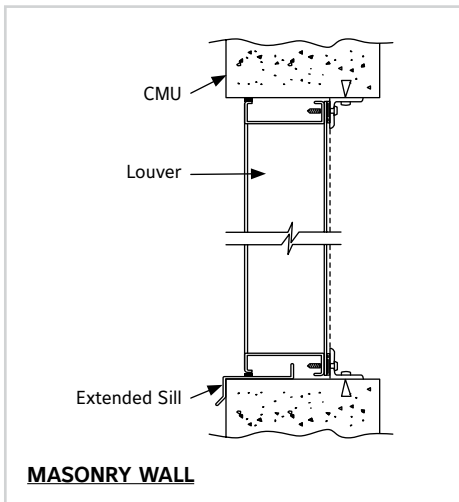
AMCA Standard 500 provides a reasonable basis for testing and rating louvers. Testing to AMCA 500 is performed under a certain set of laboratory conditions. This does not guarantee that other conditions will not occur in the actual environment where louvers must operate.

The louver system should be designed with a reasonable safety factor for louver performance. To ensure protection from water carry-over, design with a performance level somewhat below maximum desired pressure drop and .01 oz. of water penetration.

Water penetration
 Test size 48" wide X 48" high (1219 X 1219)
 Beginning point of water penetration at .01 oz. /sq. ft. is
 680 fpm (207 m/min).



TYPICAL INSTALLATION DETAILS



Accessories at additional cost.

SUGGESTED SPECIFICATION

Furnish and install louvers as hereinafter specified where shown on plans or as described in schedules. Louvers shall be stationary type entirely contained within a 6" (152) frame. Louver components (heads, jambs, sills, blades & mullions) shall be factory assembled by the louver manufacturer. Louver sizes too large for shipping shall be built up by the contractor from factory assembled louver sections to provide overall sizes required. Louver design shall incorporate structural supports required to withstand a wind load of 30 lbs. per sq. ft. (1.44kPa) (equivalent of a 110 mph wind [177 KPH] - specifier may substitute any loading required).

Louvers shall be continuous appearing stationary blades - intermediate support mullions shall not interrupt blade appearance when viewed from outside of louver.

Louvers shall be Ruskin Model ELF6811S extruded 6063T6 aluminum alloy construction as follows:

Frame: .125" (3.2) wall thickness.

Blades: .080 (2.0) wall thickness at 45° angle on approximately 6" (152) centers.

Screen: 3/4" x .051" (19 x 1.3) expanded, flattened aluminum in removable frame.

Finish: Select finish specification from Ruskin Finishes Brochure.

i LINKS TO IMPORTANT DOCUMENTS

Document Title
Paint Finishes and Color Guide
Limited Warranty Document



3900 Doctor Greaves Road
Grandview, MO 64030
Website: www.ruskin.com
Phone: (816) 761-7476