

AS100 HONEYCOMB STRAIGHTENING SECTION

APPLICATION

The AS100 Honeycomb Straightening Section is a perfect solution for straightening the airflow in a turbulent section of duct. The commercial grade aluminum honeycomb is a lightweight core material that offers excellent straightening characteristics and corrosion resistance. The core material is made from 3003 aluminum alloy foil that is 3" (76) in the direction of airflow. The AS100 is a perfect complement to air measuring probes and stations since laminar flow can be critical to measuring airflow.

SPECIFICATIONS

FRAME

Rectangle, 16 gauge (1.6) galvanized steel (sleeve - no flange).
Round, 20 gauge (1.0) galvanized steel up to 24" (610) diameter, 6" (152) long.

OPERATING RANGE

Operating Temperature: -20°F to +350°F (-29°C to +177°C).

CORE MATERIAL

3003 Commercial Grade Aluminum Alloy .003" (.076) foil thickness, 97% free area.

PRESSURE DROP

0.06" wc (15Pa) @ 1000FPM (5.1m/s).

CELL SIZE

.50" (13).

DENSITY

2.5 pcf.

BARE COMPRESSIVE STRENGTH

165 PSI (Modulus 40 KSI).

VELOCITY RANGE

0 through 5,000 feet per minute (0-25.4 m/s).

MINIMUM SIZE

Rectangle, 6" x 6" (152 x 152).
Round, 4" (102).

MAXIMUM SIZE

Rectangle, 48" x 96" (1219 x 2438) Single Section.
Unlimited multiple sections.
Round, 24" (610). For larger sizes, consult factory.

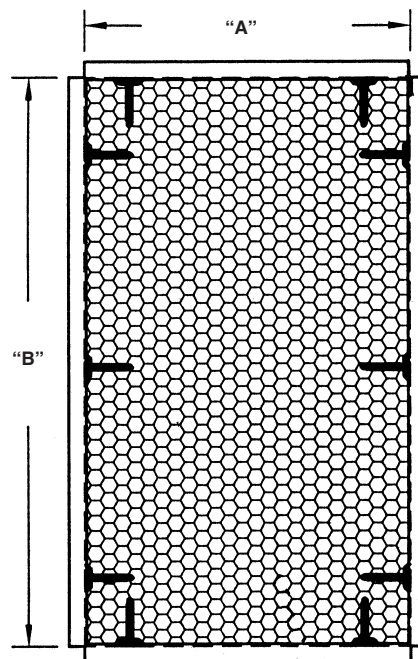
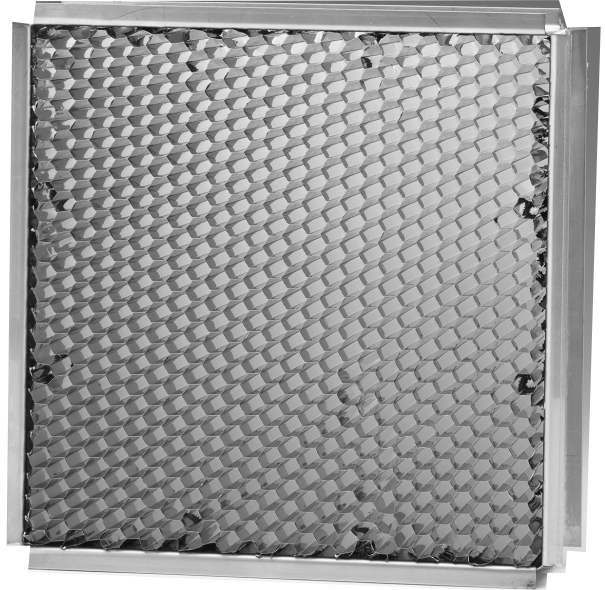
VARIATIONS

Rectangle

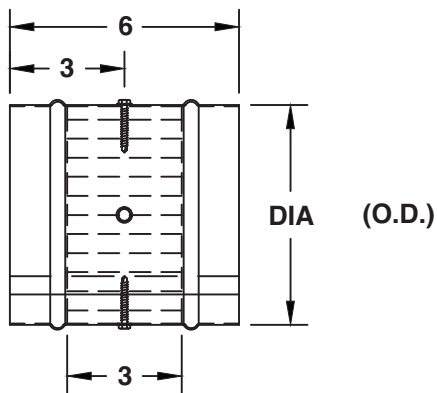
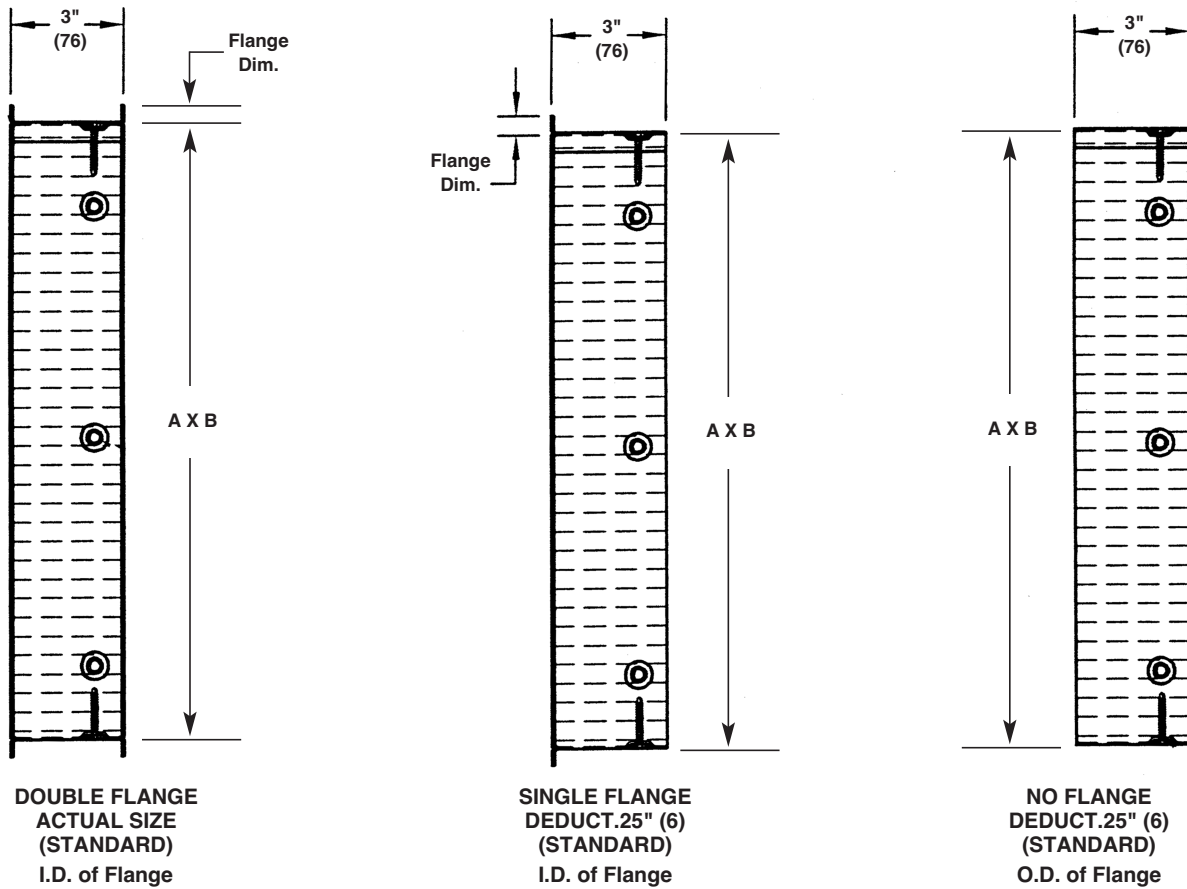
- .50" (13) Flanged Frame
- 1" (25) Flanged Frame
- 1.50" (38) Flanged Frame

Notes:

1. Values shown in parenthesis () are millimeters unless otherwise indicated.
2. Rectangle units ordered with channel frame are furnished approximately 1/4" (6) smaller than given opening.
3. Rectangle units ordered with flanges are furnished dimensioned to the inside dimension of the flange(s).
4. Round units are furnished approximately 1/8" (3) smaller than ordered.



FRAME DETAILS



SUGGESTED SPECIFICATION

Furnish and install, at locations shown on plans or as in accordance with schedules, a Honeycomb straightening section with 97% free area. Honeycomb straightening section shall be factory expanded and mounted in a 16 gauge (1.6) galvanized sleeve with mounting angles when necessary for installation. Assembly shall be flame resistant and suitable for temperatures up to 350°F (177°C). Honeycomb core shall be .50" (13) cell x 3" (76) deep 3003 aluminum alloy foil that is resistant to moisture, corrosion and fungi. Core material shall be tested at 0.625" per MIL-STD-401 at room temperature. Honeycomb Straightening Section shall be, in all respects, equivalent to Ruskin Model AS100.



3900 Dr. Greaves Rd.
Kansas City, MO 64030
(816) 761-7476
FAX (816) 765-8955
www.ruskin.com