

RUSKIN[®]
GO GREEN  *GO RUSKIN*

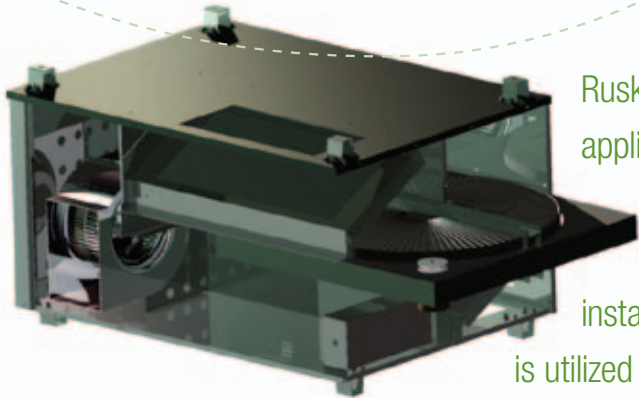


- *Energy Recovery Ventilator*
- *Up to 1000 cfm*
- *Low Profile*
- *Ideal for Meeting Rooms, Classrooms and Small Retail*

The **Mini Ventilator**
Advantage



MiniVentilator



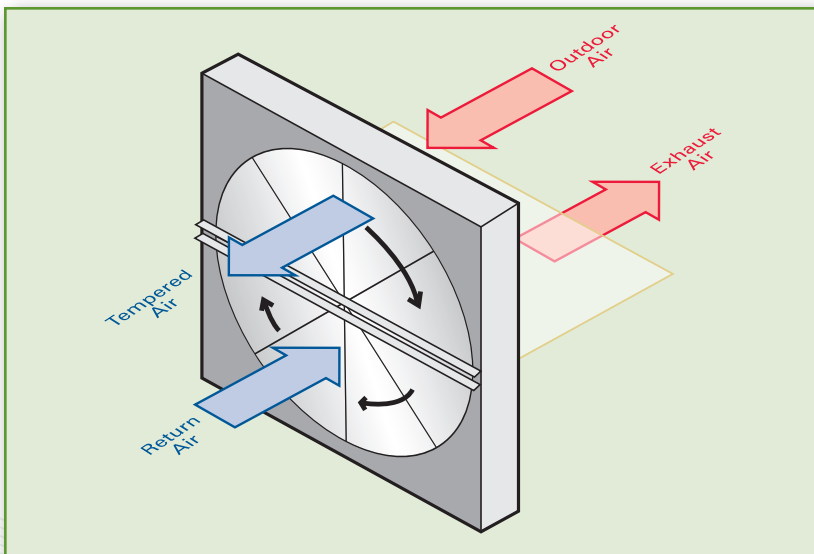
Ruskin MiniVentilator ERV's are 60%+ effective and perfect for applications requiring up to 1000 CFM for ventilation. This range of ventilation requirement is typically found in classrooms, meeting rooms, and small retail. The MiniVentilator is designed for indoor installation and can be floor or ceiling mounted. A removable panel is utilized to allow for easy access to the enthalpy wheel and filters.

Using Desiccant Wheel Technology Provides Energy Recovery Benefits

Energy Savings, Exceptional Payback and Improved Comfort

Investing in energy recovery wheels in HVAC systems can provide payback in savings and comfort.

- Initial cost savings can be achieved by pre-conditioning the outdoor air, which can reduce the cooling load and tonnage required to meet that load. Free software is available at www.ruskin.com to calculate the load reductions and provide the energy and dollar savings in most areas of the United States and Canada.
- Most HVAC systems will use approximately 80% of the load to control space humidity. The Ruskin desiccant wheel technology will allow nearly 75% of the humidity entering through the outside air path to be exhausted to the outside through the exhaust airstream, which not only saves energy but improves comfort.



STANDARD DESIGN FEATURES ON ALL MODELS

- Up to 1000 cfm
- Designed for indoor use
- Painted cabinet
- Hang or base mounting
- Provides air filtration with MERV 8 filters on intake and exhaust
- Access to filters and enthalpy wheel without tools
- Closed cell insulated cabinet
- Flanges on all intake / discharge connections
- Outdoor air intake can alternate between top and adjacent side
- Return air intake can alternate between bottom and adjacent side
- 110V single phase
- Motors thermally protected and suitable for use with speed controller
- Effectiveness of 60% or higher using AHRI certified enthalpy wheels

FACTORY INSTALLED OPTIONS ON MV250X, MV450X, MV750X

- Frost control
- Wheel rotation sensor
- Start, stop, jog function

Performance

MV 250/250X

External Static Pressure		0.0	0.1	0.2	0.3	0.4	0.5	0.6	0.7	0.8	0.9	1.0
CFM	Low	498	479	459	435	411	384	347	307	263	218	175
	High	592	565	530	496	463	431	398	356	311	262	218

MV 450/450X

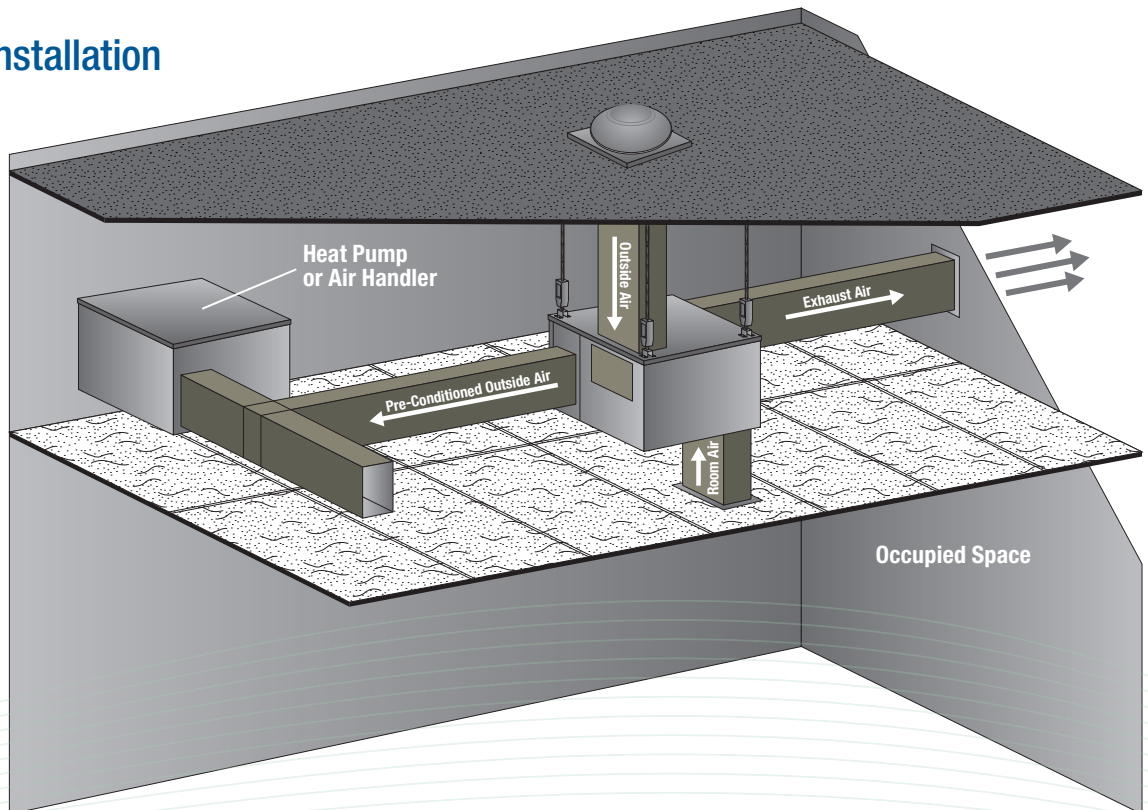
External Static Pressure		0.0	0.1	0.2	0.3	0.4	0.5	0.6	0.7	0.8	0.9	1.0
CFM	Low	656	640	625	609	590	570	552	538	511	477	440
	Medium	729	708	690	671	649	627	605	582	560	530	495
	High	783	765	740	721	700	678	650	622	598	580	560

MV 750/750X

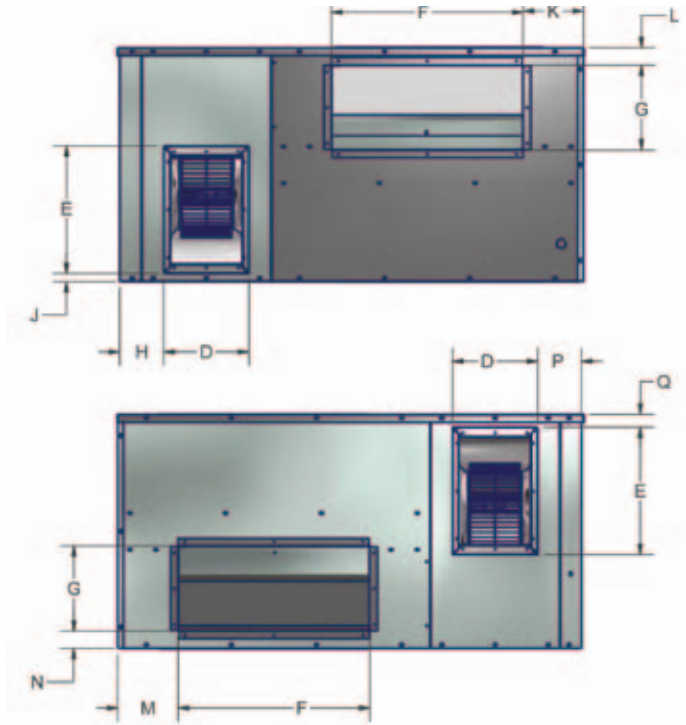
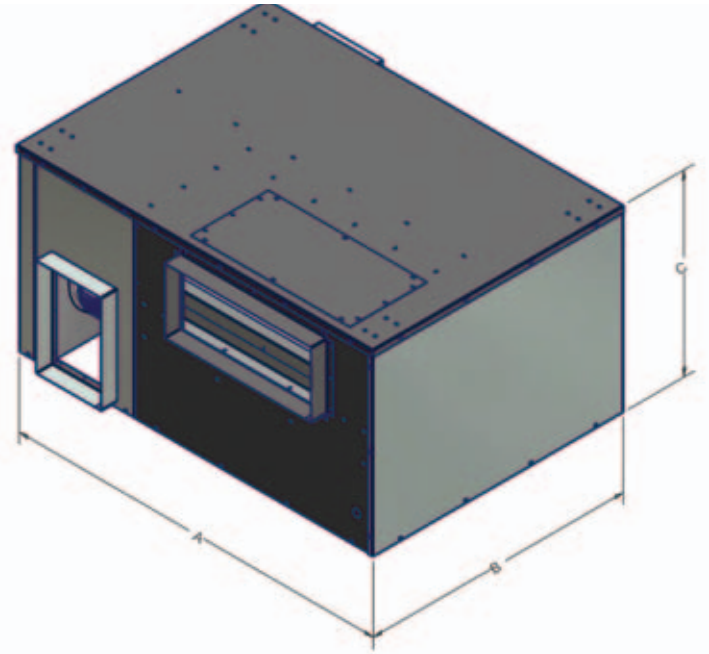
External Static Pressure		0.0	0.1	0.2	0.3	0.4	0.5	0.6	0.7	0.8	0.9	1.0
CFM	Low	823	822	821	819	808	790	778	762	755	738	718
	Medium	997	992	985	975	960	940	928	905	884	872	850
	High	1162	1145	1130	1104	1095	1090	1068	1047	1020	998	967

Variable speed controller is available for lower flows.

Typical Installation



CABINET DIMENSIONS



Model	Overall Cabinet			Duct Openings				Other Dimensions								Approximate Weight (lbs)
	A	B	C	D	E	F	G	H	J	K	L	M	N	P	Q	
MV 250	40	29	18	6	10	10	6	5.676	0.772	5.340	1.589	5.340	1.339	5.676	1.202	190
MV 250X*	40	29	18	6	10	10	6	5.676	0.772	5.340	1.589	5.340	1.339	5.676	1.202	195
MV 450	40	29	18	8	12	12	6	5.676	0.772	5.340	1.589	5.340	1.339	5.676	1.202	190
MV 450X*	40	29	18	8	12	12	6	5.676	0.772	5.340	1.589	5.340	1.339	5.676	1.202	195
MV 750	43.6	30.6	22	8	13	18	8	4.130	0.772	5.674	1.625	5.674	1.625	4.130	1.202	220
MV 750X*	43.6	30.6	22	8	13	18	8	4.130	0.772	5.674	1.625	5.674	1.625	4.130	1.202	225

*X models are built with frost control, rotation sensor and start, stop, jog function factory installed.

FIELD INSTALLED OPTIONS

- Vibration isolation
- Remote on/off motion detector
- Remote speed controller
- Remote timer option (24/7)
- Dirty filter sensor
- NEMA 250 Type 1 enclosure disconnect switch
- Electronic airflow measurement using pressure transducer
- 2" outdoor air and return air filter up to MERV 13
- Motorized intake damper (optional)

RUSKIN®
Air & Sound Control
Specified by Many – Equaled by None

3900 Dr. Greaves Rd., Kansas City, MO 64030
 (816) 761-7476 ■ Fax (816) 765-8955 ■ Email: ruskin@ruskin.com ■ www.ruskin.com

RMVB-4/12 Replaces 8/11



Printed on recycled paper