

BLANK-OFF PANELS

Sheet Formed Aluminum



APPLICATION

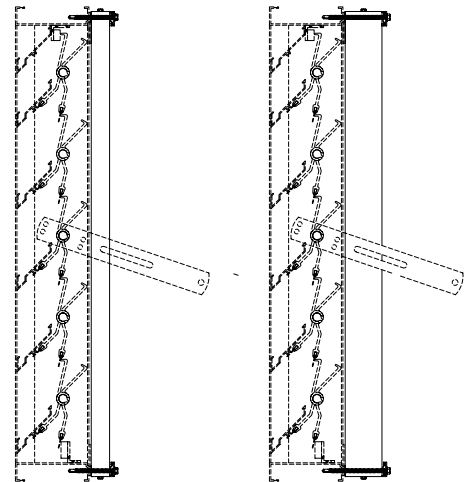
Blank-off panels are highly customized to prevent air through the louver and resist the transference of heat evaporating certain designated locations. Insulated panels are completely enclosed to eliminate outside exposure for longevity.

STANDARD CONSTRUCTION

Frame	0.040: thk aluminum sheet. Offered with and without insulation.
Finish	Mill.
Maximum Factory Assembly Size	Sized to fit louver order panel size: (shown in table below).
Insulation Material (Optional)	EPS Expanded Polystyrene Foam (EPS)

Consult Ruskin for additional information.

Make Table:	Max Size Blank-Off Dimension	
	48" Wide Assembly	60" Wide Assembly
Blank Off Type		
Non Insulated	48"	60"
1" Insulated	46"	58"
2" Insulated	44"	56"



1" Insulated B/O Panel

2" Insulated B/O Panel

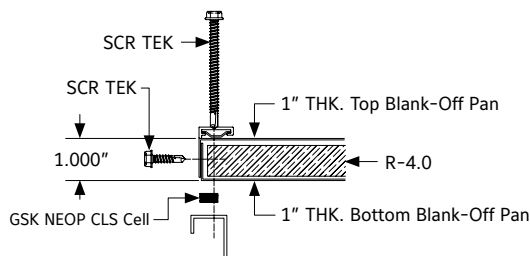


YEAR LIMITED WARRANTY

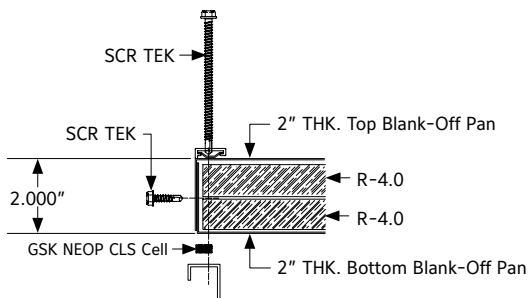


ISO 9001 CERTIFIED

ASSEMBLY DETAIL



1" Insulated Blank-Off Assembly Detail



2" Insulated Blank-Off Assembly Detail

VARIATIONS

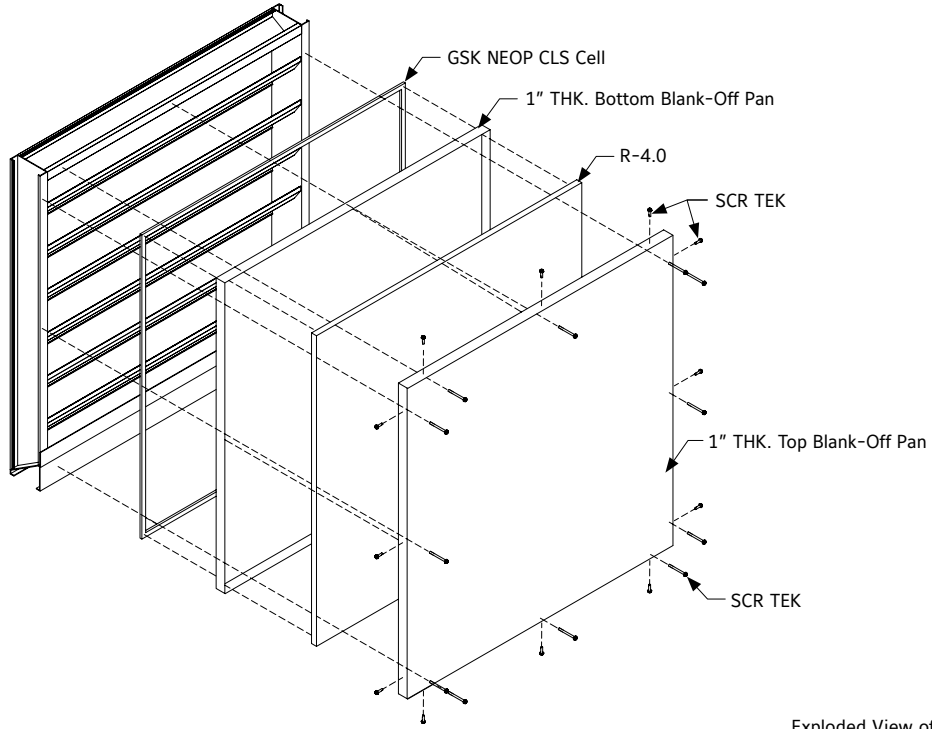
Variations to the basic design of this louver are available at additional cost.

- ▶ Non Insulated blank off panels with 0.040"thk aluminum sheathing
- ▶ 1" insulated blank off panel with 0.04"thk aluminum sheathing 4.0 R-Value
- ▶ 2" insulated blank off panel with 0.040"thk aluminum sheathing 8.0 R-Value
- ▶ Selection of finishes: baked enamel (modified fluoropolymer), epoxy, integral color and clear anodize, PVDF, flurodize, powder coat and prime coat

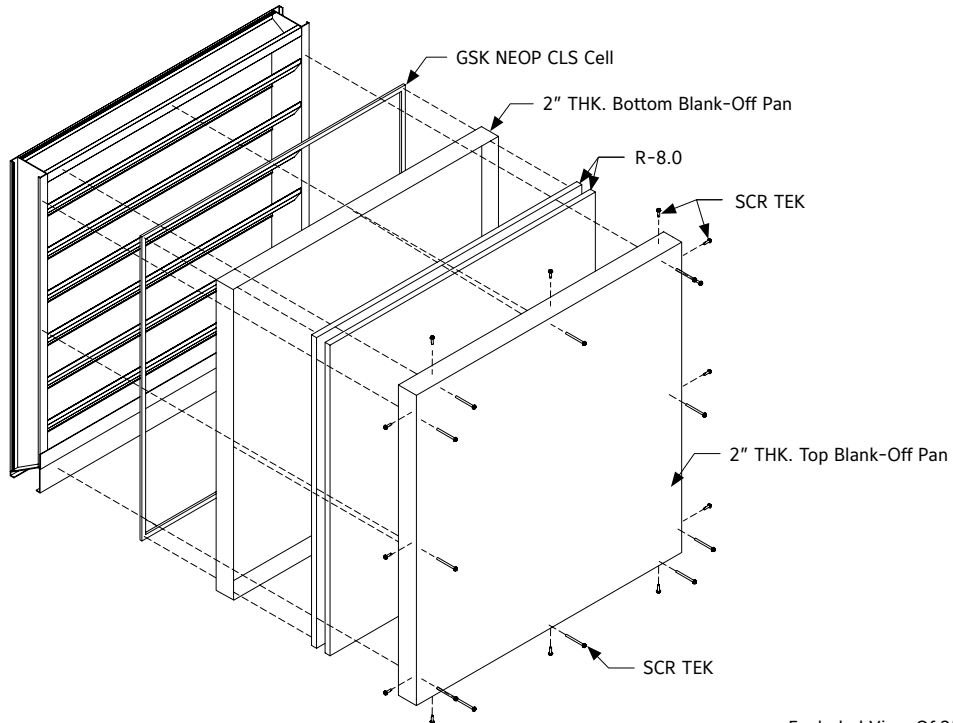
Consult Ruskin for other special requirements.

NOTES:

- On assemblies that are more than one section tall, the HVBS members and blank-offs shall extend to the top and/or bottom of sections at locations where other sections join (for splicing)
- Blank-offs to be finished to match louver unless otherwise specified
- 0.125" x 2" alum. strap is required for each ship section that is 60" or greater in width with no HVBS



Exploded View of 1" Insulated Blank-Off Panel



Exploded View Of 2" Insulated Blank-Off Panel

i LINKS TO IMPORTANT DOCUMENTS

Document Title

Paint Finishes and Color Guide

Limited Warranty Document



3900 Doctor Greaves Road
Grandview, MO 64030
Website: www.ruskin.com
Phone: (816) 761-7476