

SSZBH4/SSZBH6

"Z" Blade Sunshade Horizontally Mounted

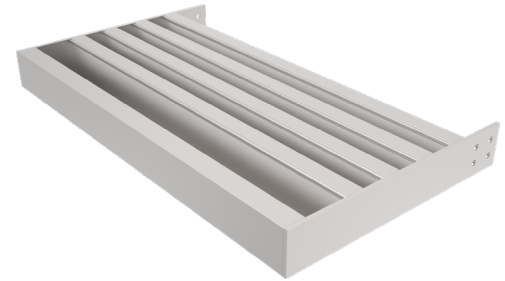


APPLICATION

The SSZBH is a horizontally mounted sunshade featuring a 4" or 6" Z shaped blade to provide optimal shading, promoting lower energy costs and cutting down on window glare.

STANDARD CONSTRUCTION

Blade	6063T6 extruded aluminum, .125" (3.18) nominal thickness. SSZBH4 - 4" (102) approximately 5" (127) center-to-center spacing. SSZBH6 - 6" (152) approximately 6" (152) center-to-center spacing.
Outriggers	Straight Flat Bar, 0.25 5052-H32 Sheet Aluminum.
Fascia	Rectangle Tube, 6063-T6 extruded aluminum, .125" nominal thickness.
Installation	Installation brackets and hardware by others.
Construction	Mechanically fastened.
Finish	Mill.
Minimum Size	12"w x 12"h (305 x 305).
Maximum Section Size	Unlimited width x 120" (3048). Maximum Single Section is 72" x 60" (1828 x 1524)
Standard Design	30PSF Windload, 25PSF Snowload.
Overall	Single sections may be joined together in the field for unlimited overall size. Field assembly and supporting structure are by others.



"The Ruskin Sun Control products provide the optimal shading to promote lower energy costs and to cut down the glare on your buildings. Whether vertical or horizontally mounted, Ruskin can provide the optimal shading product for your needs."

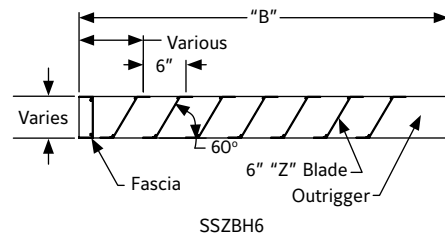
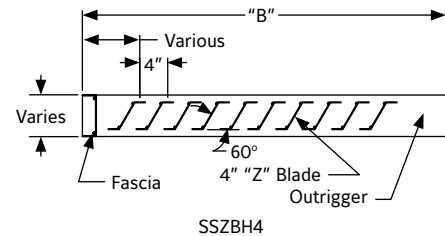


VARIATIONS

- ▶ Alternate blade spacing
- ▶ Outrigger Options: tapered bar, channel, square tube & rectangular tube
- ▶ Fascia Options: channel, round tube, square tube & Bull Nose
- ▶ Installation brackets and hardware are available. Please consult Ruskin for available designs
- ▶ Optional finishes available at additional cost. Please see [Paint Finishes and Color Guide](#) and [Finish Type Model Chart](#) for more details. Contact louversales@ruskin.com with questions.

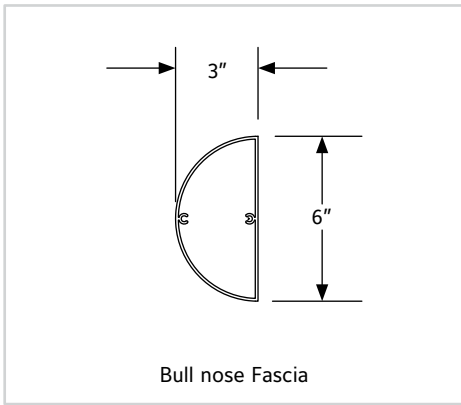
All Variations are available at additional cost.

Sunshade design is highly customizable. Consult Ruskin for availability.

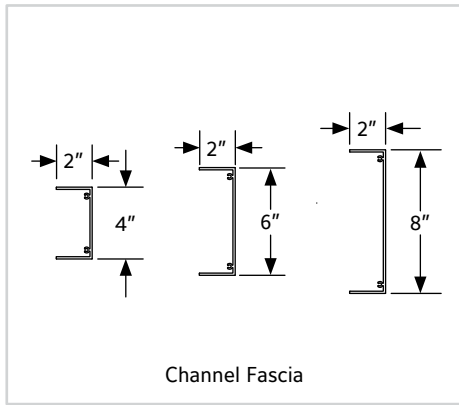


NOTE: Dimensions shown in parenthesis () indicate millimeters.

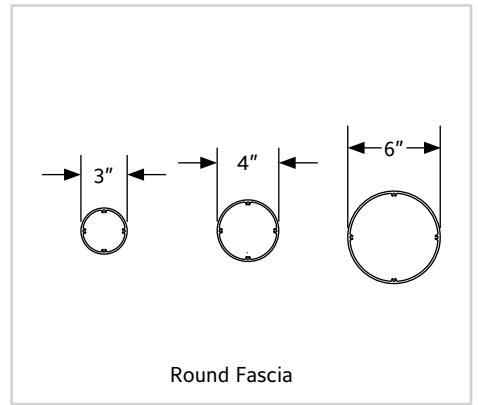
OUTRIGGER AND FASCIA OPTIONS



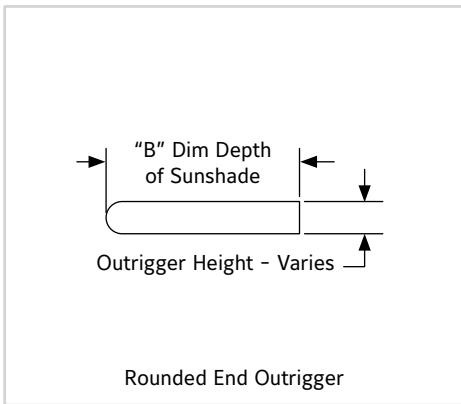
Bull nose Fascia



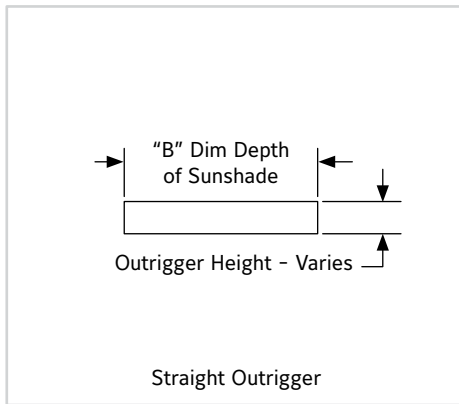
Channel Fascia



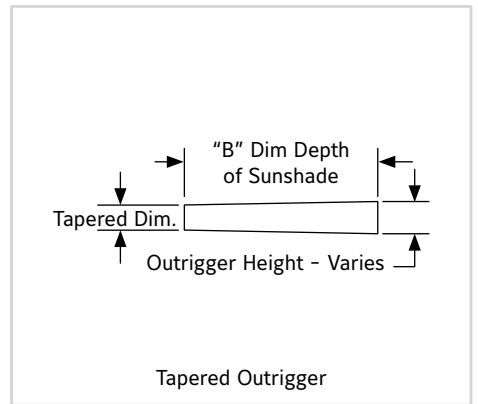
Round Fascia



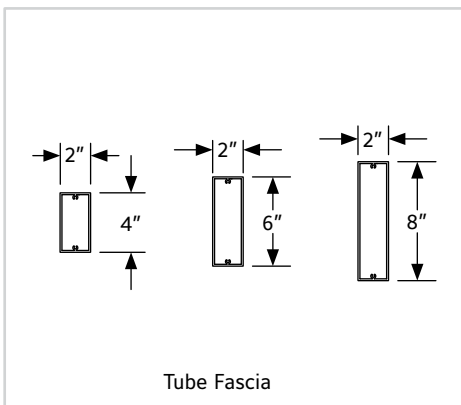
Rounded End Outrigger



Straight Outrigger



Tapered Outrigger



Tube Fascia

LINKS TO IMPORTANT DOCUMENTS

Document Title

Limited Warranty Document



3900 Doctor Greaves Road
Grandview, MO 64030
Website: www.ruskin.com
Phone: (816) 761-7476