

# Extended Sill & Extended Sill with End Dams

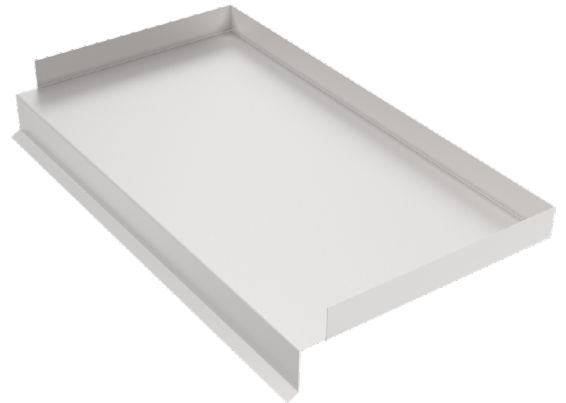


## APPLICATION

Extended sill are used as a secondary water protection barrier to help keep water from entering.

## STANDARD CONSTRUCTION

1	<b>Formed Extended Sill With End Dams</b>	Formed Aluminum 0.08" Sheet
2	<b>Formed Extended Sill Without End Dams</b>	Formed Aluminum 0.08" Sheet
3	<b>Formed Intermediate Gutter</b>	Formed Aluminum .080" Sheet
4	<b>Extruded Extended Sill 4.50" Deep</b>	6063-T6 Extruded Aluminum .063"
5	<b>Formed Sill Lap Strip 3.00" Wide</b>	Formed Aluminum .040" Sheet



YEAR LIMITED WARRANTY

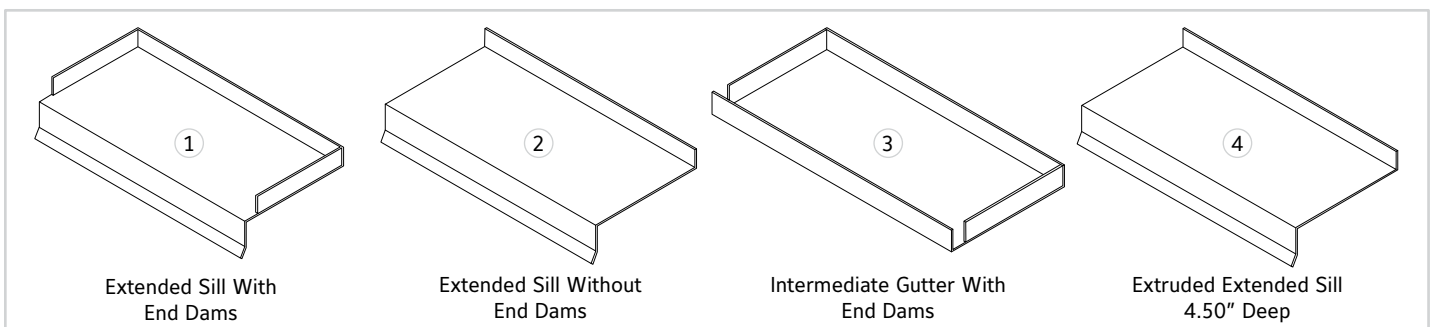
ISO9001 CERTIFIED

## SUBSTITUTIONS, CONSTRUCTION

1	<b>Formed Extended Sill With End Dams</b>	Formed Aluminum .080" Sheet
2	<b>Formed Extended Sill Without End Dams</b>	Formed Aluminum 0.125" Sheet, Galvanized, 304SS, 316SS
3	<b>Formed Extended Sill Without End Dams</b>	Formed Aluminum 0.125" Sheet, Galvanized, 304SS, 316SS

Consult Ruskin for additional information.

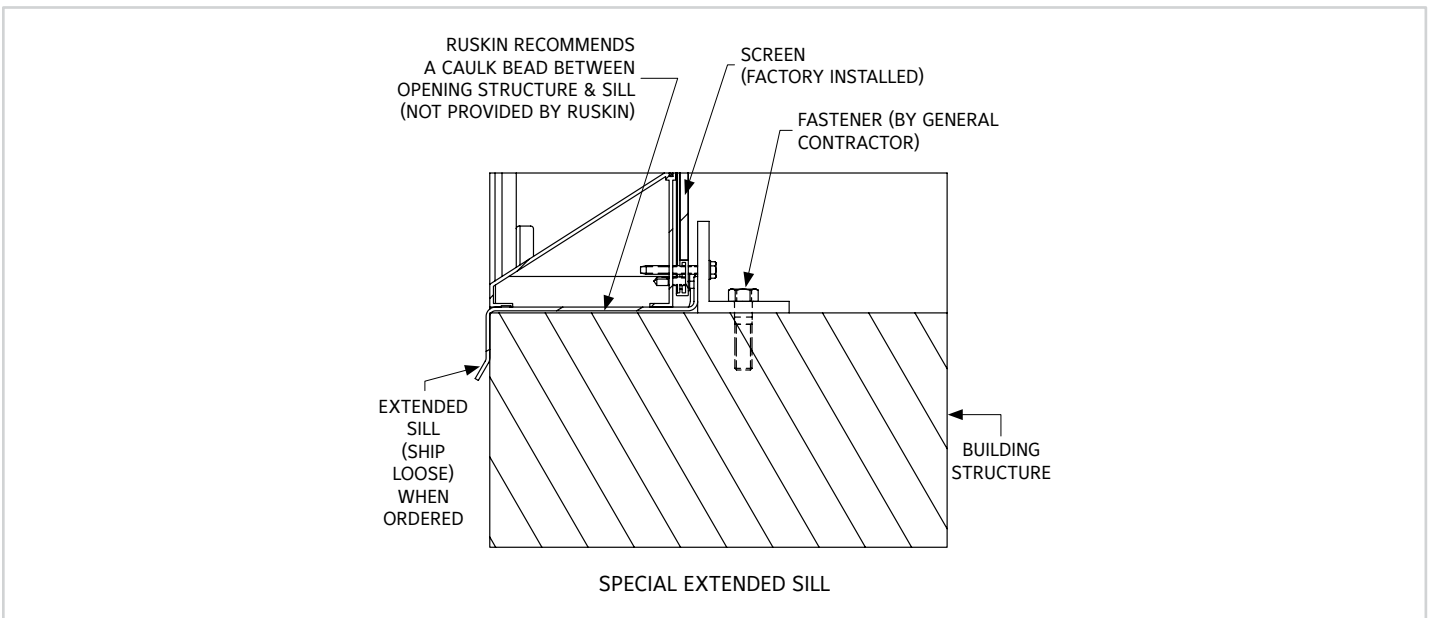
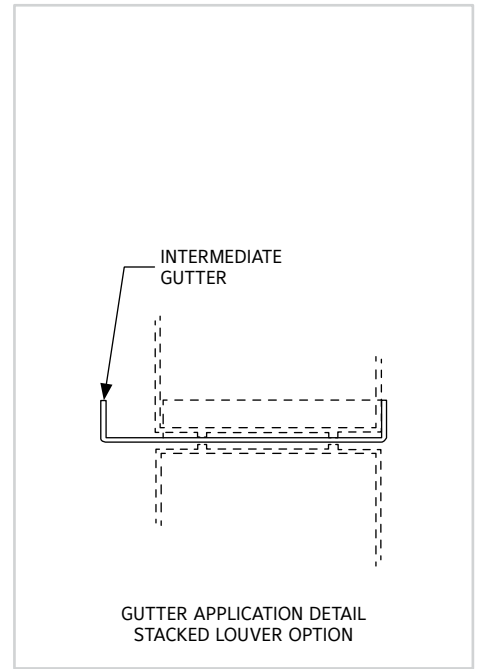
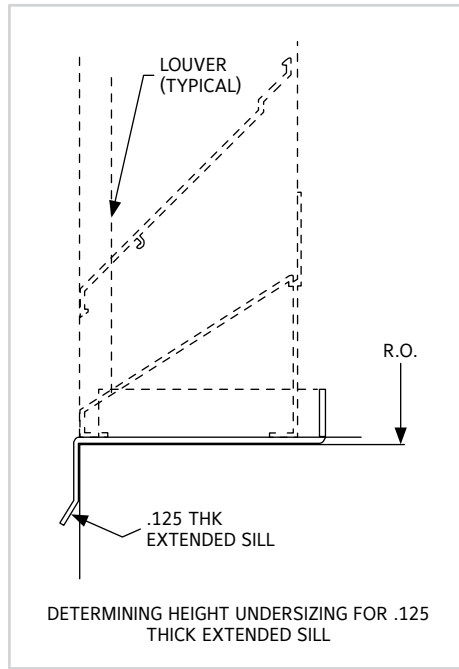
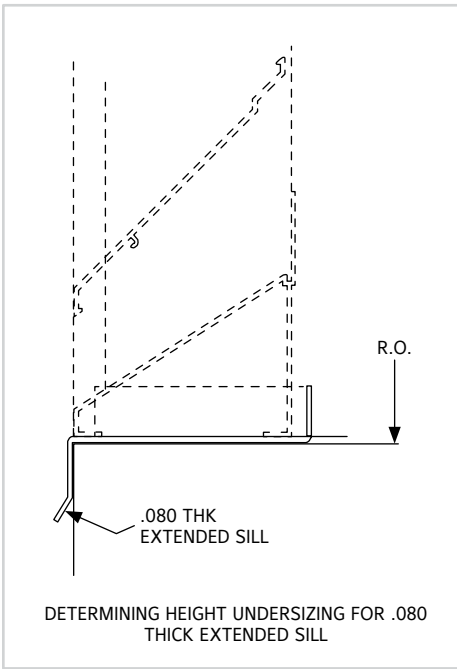
## STANDARD DRAWING



### NOTES:

- When painted - .080" Thk. material is to be the minimum thickness.
- Sills 4.50" deep or deeper are formed of .080" Thk. material or thicker.
- Penthouse Sill application - Sill is formed of .125" Thk. material.
- Material used - 5005-H34 for mill finish and anodized sills. (Note: Sills formed prior to anodizing)

# STANDARD DRAWING



## LINKS TO IMPORTANT DOCUMENTS

### Document Title

Paint Finishes and Color Guide

Limited Warranty Document



3900 Doctor Greaves Road  
Grandview, MO 64030  
Website: [www.ruskin.com](http://www.ruskin.com)  
Phone: (816) 761-7476