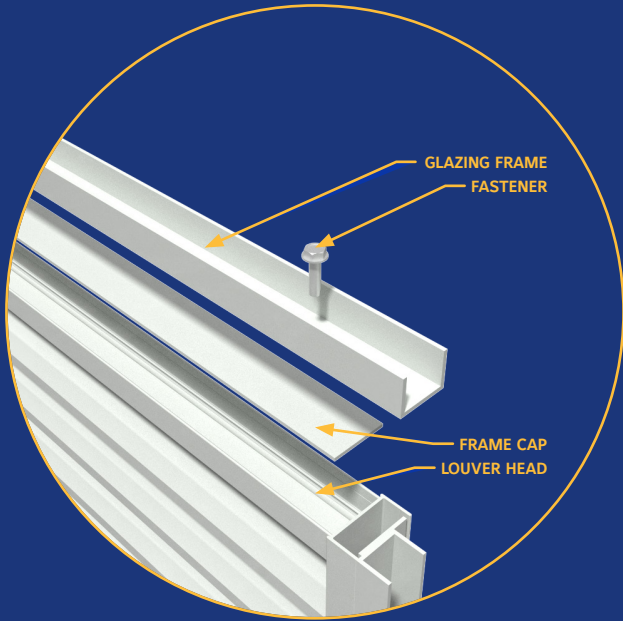
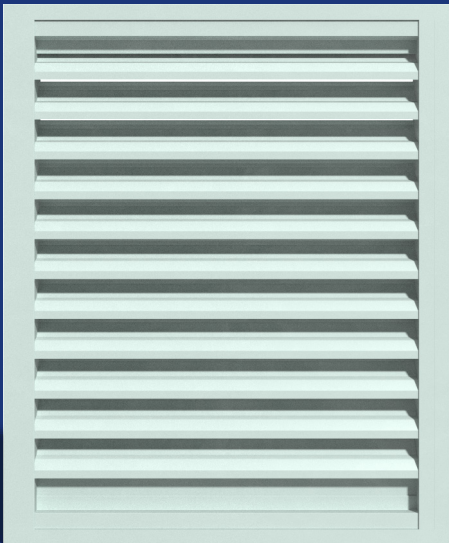


FRAME DETAIL



GLAZING FRAME



GLAZING FRAME OPTIONS

- Louvers glazed into window framing.
- No additional mounting clip requirements.
- Several flush or offset options available.
- Fast & routine procedures.

OUR HISTORY

Ruskin was founded in the Ruskin Heights area of Kansas City in 1958. From our humble beginnings with a handful of employees building fire dampers, Ruskin has grown into the largest and most innovative manufacturer of air control solutions with 29 production and office locations worldwide. We are the leading manufacturer of air and sound control and architectural products for the heating, ventilating & air conditioning (HVAC) and industrial markets. Ruskin is also the worldwide leader in dampers for the tunnel ventilation, process applications, and waste-water treatment facilities and has supplied engineered equipment on major projects throughout the world. In 2014, Ruskin was acquired by Johnson Controls, INC. Ruskin is part of the Air Distribution Technologies, Inc., a leading provider of innovative air distribution and ventilation solutions for residential and non-residential buildings as well as air movement and control solutions for industrial and infrastructure applications. With the addition of manufacturing in China, the Middle East, and India in recent years, the group has leveraged its global brands and increased presence overseas.



3900 Dr. Greaves Rd.
Grandview MO 64030
P: 816.761.7476
F: 816.765.8955
www.ruskin.com

RUSKIN®

AUTHORITY IN AIR CONTROL

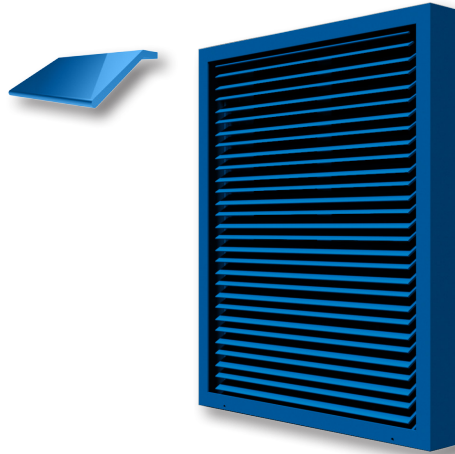
GLAZING LOUVERS



ELF15J
THIN LINE
STATIONARY LOUVER

The ELF15J is 1 1/2" deep stationary louver which has a 45 degree blade angle that is primarily used for decorative and PTAC applications where water penetration is not a concern.

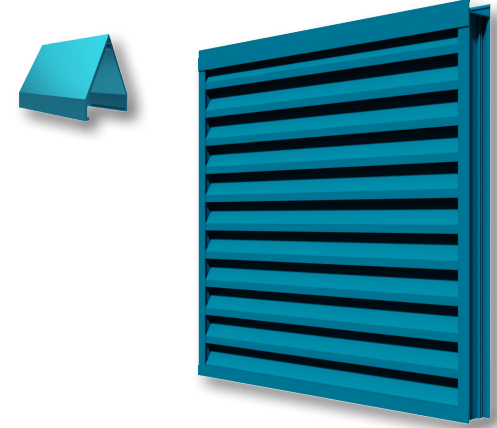
Windload (PSF)	Frame Depth	AMCA 500-L	Min Size	Max Size
20 PSF	1 1/2" deep	N/A	12" x 12"	60" x 60"



ET125-30
THIN LINE
STATIONARY LOUVER

The ET125 and ET125-30 louver(s) are 1 1/4" deep thinline stationary louver(s) that are primarily used for decorative and PTAC applications where water penetration is not a concern.

Windload (PSF)	Frame Depth	AMCA 500-L	Min Size	Max Size
20 PSF	1 1/4" deep	N/A	12" x 12"	72" x 72"



ELF22V
STATIONARY LOUVER

The ELF22V is a 2" deep stationary louver which has a 60 degree blade angle that is primarily used for decorative and PTAC applications where water penetration is not a concern.

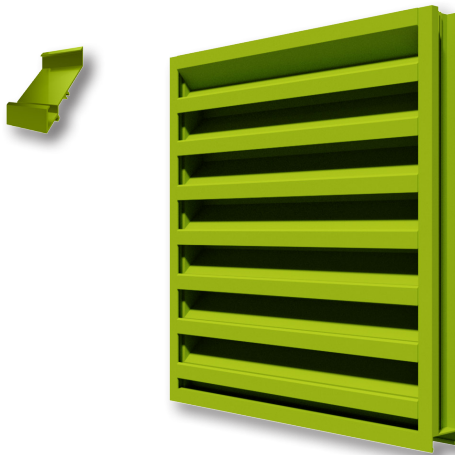
Windload (PSF)	Frame Depth	AMCA 500-L	Min Size	Max Size
20 PSF	2" deep	N/A	12" x 12"	48" x 96"



ELF211
STATIONARY LOUVER

The ELF211 is a 2" deep stationary louver with a 45 degree blade angle, 42% free area, and an aluminum construction for low maintenance & high corrosion resistance.

Windload (PSF)	Frame Depth	AMCA 500-L	Min Size	Max Size
20 PSF	2" deep	N/A	6" x 10"	120" x 90", 90" x 120"



ELF211D
STATIONARY LOUVER

The ELF211D is a 2" deep stationary louver featuring 38% free area with a high performance frame system and a drainable head to help collect & remove water. This louver also has an architecturally styled hidden mullion, allowing a continuous blade appearance.

Windload (PSF)	Frame Depth	AMCA 500-L	Min Size	Max Size
20 PSF	2" deep	Water Penetration & Air Performance	6" x 10"	120" x 90", 90" x 120"



EME220DD
STATIONARY
WIND-DRIVEN RAIN LOUVER

The EME220DD Stationary Wind Driven Rain Louver has a 2" deep frame, sightproof blades, 43% free area, and great pressure drop performance.

Windload (PSF)	Frame Depth	AMCA 500-L	Min Size	Max Size
25 PSF	2" deep	Water Penetration, Air Performance, & Wind-Driven Rain Performance	6" x 6"	120" x 90", 90" x 120"