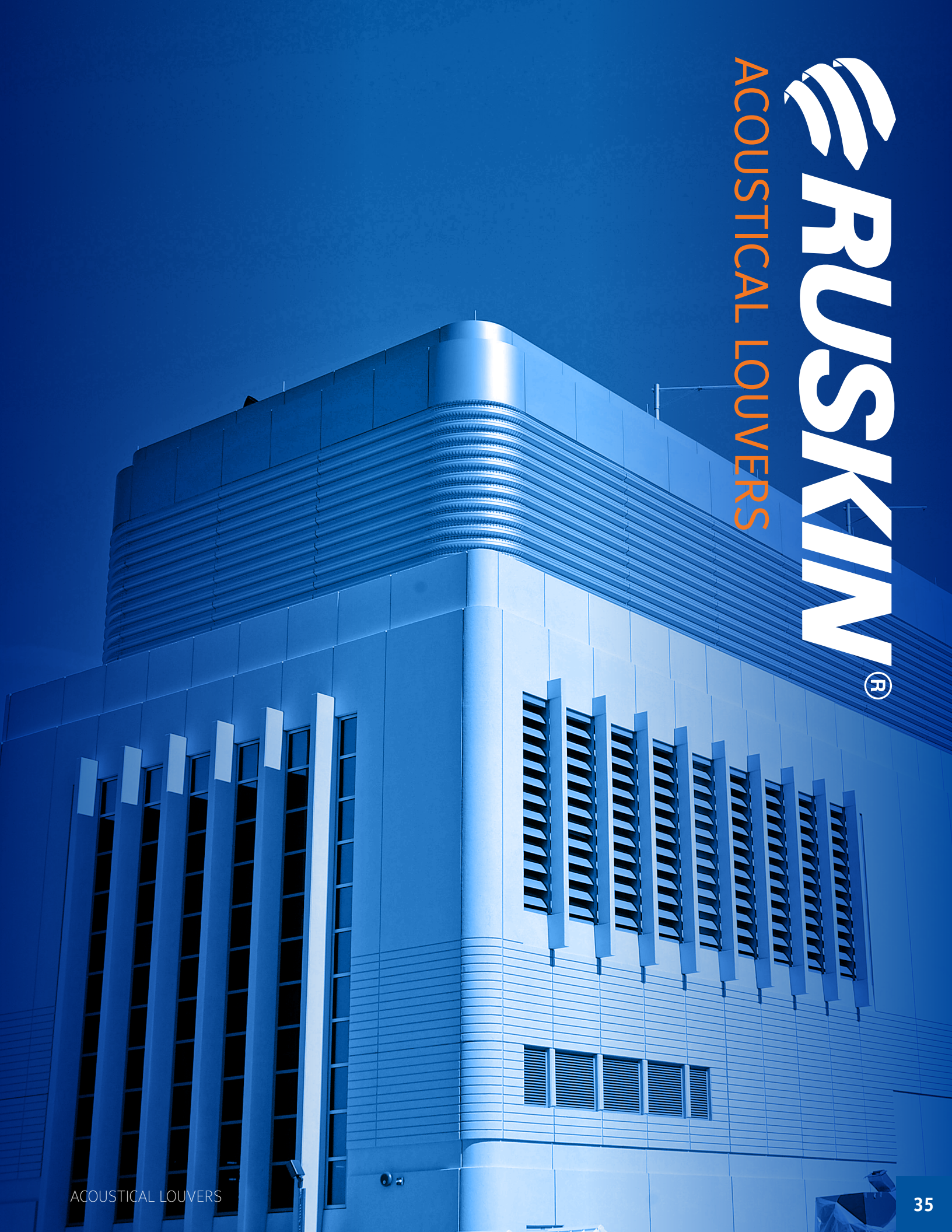




ACOUSTICAL LOUVERS



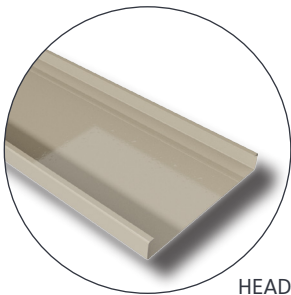
# ACOUSTICAL LOUVERS



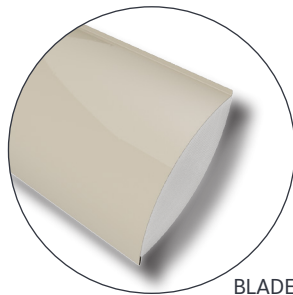
ACL645

ACL1245AF

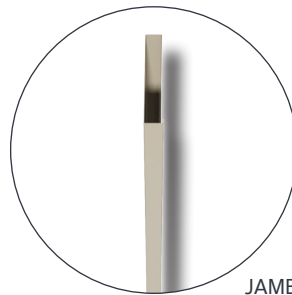
## COMPONENT DETAILS



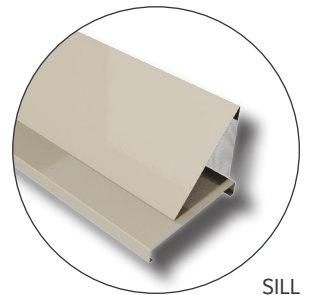
HEAD



BLADE



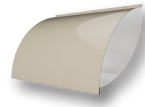
JAMB



SILL



- ATTENUATING BLADES
- 12" BLADE DEPTH
- STEEL/ALUMINUM BUILD
- AMCA 511 LISTED
- 60" SINGLE SECTIONS



- ATTENUATING BLADES
- 12" BLADE DEPTH
- 60" SINGLE SECTIONS
- AMCA 511 LISTED
- STEEL/ALUMINUM BUILD

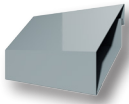


**ACL1245**  
ACOUSTICAL LOUVER

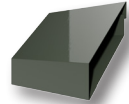
The ACL1245 Acoustical Rain Louver has 12" deep blades, a 45° blade angle, and is AMCA certified for air, water, & sound performance. Available in steel or aluminum.

**ACL1245AFD**  
ACOUSTICAL LOUVER  
with AIRFOIL BLADE

The ACL1245AFD Acoustical Louver has 12" deep airfoil blades, a 45° blade angle, is AMCA certified, and provides greater strength than linear blades, and lower pressure drop. Available in steel or aluminum.



- ATTENUATING BLADES
- 4" BLADE DEPTH
- 30% FREE AREA
- AMCA 511 LISTED
- 45° BLADE ANGLE



- ATTENUATING BLADES
- 6" BLADE DEPTH
- 29% FREE AREA
- AMCA 511 LISTED
- 45° BLADE ANGLE

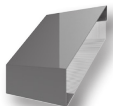


**ACL445**  
ACOUSTICAL LOUVER

The ACL445 Acoustical Louver has a 4" blade depth, a 45° blade angle, 30% free area, and is AMCA certified for air performance & water penetration. Available in steel or aluminum.

**ACL645**  
ACOUSTICAL LOUVER

The ACL645 Acoustical Louver has a 6" blade depth, a 45° blade angle, and is AMCA certified for air performance & water penetration. Available in steel or aluminum.



- ATTENUATING BLADES
- 8" BLADE DEPTH
- 27% FREE AREA
- AMCA 511 LISTED
- 45° BLADE ANGLE



- ATTENUATING BLADES
- 8" FRAME DEPTH
- 28% FREE AREA
- AMCA 511 LISTED
- 45° BLADE ANGLE



**ACL845**  
ACOUSTICAL LOUVER

The ACL845 Acoustical Louver has a 8" blade depth, a 45° blade angle, and is AMCA certified for air performance & water penetration. Available in steel or aluminum.

**ACL845AF**  
ACOUSTICAL LOUVER  
with AIRFOIL BLADE

The ACL845AF Acoustical Louver has a 8" blade depth, 28% free area, is AMCA certified for air performance & water penetration, and provides greater strength than linear blades, lower pressure drop. Available in steel or aluminum.

# ACOUSTICAL LOUVERS

Acoustical louvers utilize louver blades with a sound absorbent material to reduce infiltrating or escaping noise levels. These louvers are made of aluminum or steel and come in a variety of blade styles such as box blade and airfoil. They are commonly seen in office buildings, condominiums, and public buildings and can be sometimes specified when sound attenuators cannot be installed. Ruskin® acoustical louvers utilize an acoustical grade fibrous media to limit noise and are designed to address acoustical attenuation across all eight octave bands.



MODEL	MIN. DIM.	MAX. DIM.	DEPTH	BLADE ANGLE	BLADE STYLE	BLADE ORIENTATION	FREE AREA	AMCA CERTIFICATION			AMCA 540/550	MIAMI-DADE/FBC/TDI APPD.
								AIR PERF.	WATER PENETRATION	SOUND PERF.		
ACL1245	12" x 24"	UNLIMITED	12"	45°	ACOUSTICAL	HORIZONTAL	29%	✓	✓	✓	-	-
ACL1245AF	12" x 24"	UNLIMITED	12"	45°	ACOUSTICAL	HORIZONTAL	23%	✓	✓	✓	-	-
ACL1245AFD	12" x 24"	UNLIMITED	12"	45°	ACOUSTICAL	HORIZONTAL	29%	✓	✓	✓	540	MIAMI-DADE, FBC
ACL1245D	12" x 18"	UNLIMITED	12"	45°	ACOUSTICAL	HORIZONTAL	40%	✓	✓	✓	540	MIAMI-DADE, FBC
ACL445	12" x 18"	UNLIMITED	4"	45°	ACOUSTICAL	HORIZONTAL	30%	✓	✓	-	-	-
ACL645	12" x 18"	UNLIMITED	6"	45°	ACOUSTICAL	HORIZONTAL	29%	✓	✓	-	-	-
ACL645D	12" x 18"	UNLIMITED	6"	45°	ACOUSTICAL	HORIZONTAL	29%	✓	✓	-	-	MIAMI-DADE, FBC
ACL845	12" x 18"	UNLIMITED	8"	45°	ACOUSTICAL	HORIZONTAL	27%	✓	✓	-	-	-
ACL845AF	12" x 18"	UNLIMITED	8"	45°	ACOUSTICAL	HORIZONTAL	27%	✓	✓	-	-	-
EAL6811	12" x 12"	UNLIMITED	6"	45°	ACOUSTICAL	HORIZONTAL	30%	✓	✓	-	-	-
EAL6811M	12" x 12"	UNLIMITED	6"	45°	ACOUSTICAL	HORIZONTAL	30%	✓	✓	-	-	-

\*For the most current catalog information please visit [www.ruskin.com](http://www.ruskin.com), or use the Ruskin® Online Louver Selection Tool.

## RUSKIN® LOUVER COLORS

**\*NO LOUVER SHAPES AVAILABLE**



\*We can match any color!