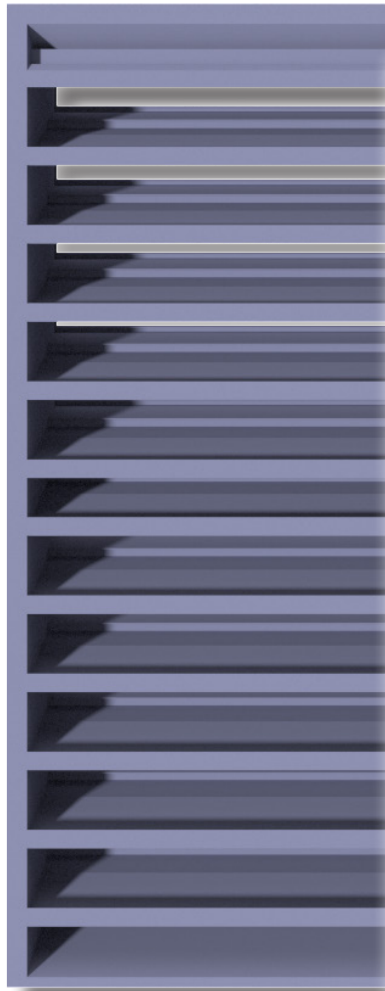


CIRQUE  
LUXURY LEASING

STATIONARY LOUVERS

  
**RUSKIM**<sup>®</sup>

# STATIONARY LOUVERS

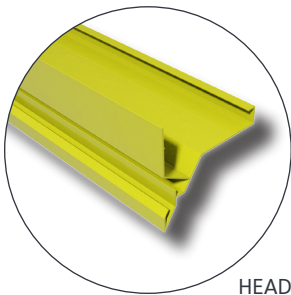


ELF6350DMP

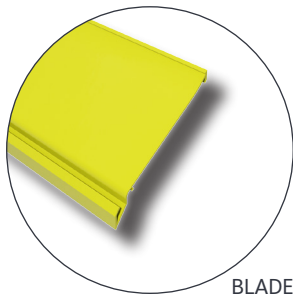


ELF6375DX

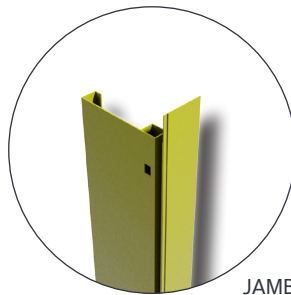
## COMPONENT DETAILS



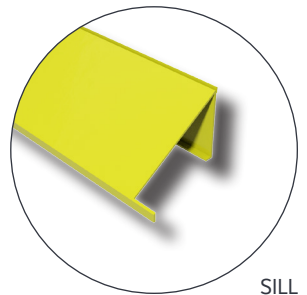
HEAD



BLADE



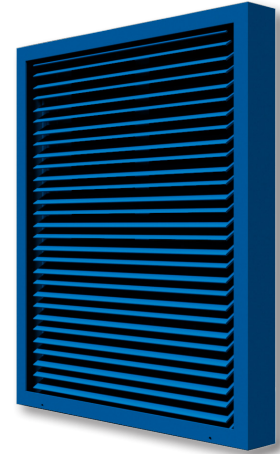
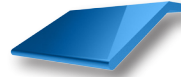
JAMB



SILL



- ALUMINUM BUILD
- 1½" FRAME DEPTH
- 50% FREE AREA
- LOW MAINTENANCE
- ECONOMICAL



- ALUMINUM BUILD
- 1¼" FRAME DEPTH
- 63% FREE AREA
- ECONOMICAL
- ARCHITECTURALLY STYLED

### ELF15J

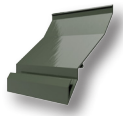
THIN LINE STATIONARY LOUVER

The ELF15J is 1½" deep stationary louver which has a 45° blade angle, primarily used for decorative and PTAC applications where water penetration is not a concern.

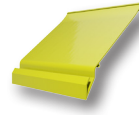
### ET125-30

THIN LINE STATIONARY LOUVER

The ET125 and ET125-30 louver(s) are 1¼" deep thin line stationary louver(s), primarily used for decorative and PTAC applications where water penetration is not a concern.



- 37½° BLADE ANGLE
- 4" FRAME DEPTH
- 49% FREE AREA
- ALUMINUM BUILD
- LOW MAINTENANCE



- 37½° BLADE ANGLE
- 6" FRAME DEPTH
- 57% FREE AREA
- ALUMINUM BUILD
- LOW MAINTENANCE

### ELF375DXD

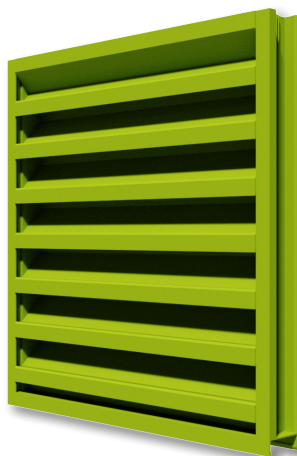
STATIONARY LOUVER

The ELF375DXD Stationary Louver has a 4" deep frame, 54% free area, 37½° blade angle, and a high performance frame system. It provides excellent water penetration performance.

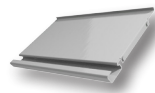
### ELF6375DX

STATIONARY LOUVER

The ELF6375DX Stationary Louver has a 6" deep frame, 57% free area, 37½° blade angle, and a high performance frame system. It provides excellent water penetration performance and continuous blade styling up to 120".



- ALUMINUM BUILD
- 2" FRAME DEPTH
- 38% FREE AREA
- LOW MAINTENANCE
- EXCELLENT PERFORMANCE



- 37½° BLADE ANGLE
- FORMED STEEL
- 50% FREE AREA
- ECONOMICAL
- LOW PRESSURE DROP

### ELF211D

STATIONARY LOUVER

The ELF211D is a 2" deep stationary louver featuring 38% free area with a high performance frame system and a drainable head to help collect and remove water. This louver also has an architecturally styled hidden mullion, allowing a continuous blade appearance.

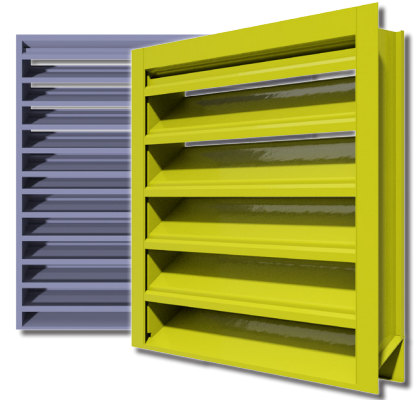
### L375D

STATIONARY LOUVER

The L375D Stationary Louver has a 4" deep frame, 50% free area, low pressure drop, and low water penetration. This louver also has an architecturally styled hidden mullion.

# STATIONARY LOUVERS

Stationary louvers are commonly seen in applications that require intake and exhaust ventilation. Of all of the louver sub categories, stationary louvers are the most common ones used and have the largest breadth of models. Stationary louvers are both drainable and non-drainable, provide protection for water infiltration, and wind-driven rain. Non-drainable models are commonly sought after for projects with an emphasis on architectural aesthetics while drainable models perform better in guiding moisture away from the area behind the louver.



MODEL	MIN. DIM.	MAX. DIM.	DEPTH	BLADE ANGLE	BLADE STYLE	BLADE ORIENTATION	FREE AREA	AMCA CERTIFICATION	
								AIR PERF.	WATER PENETRATION
ELF15J	6" x 6"	UNLIMITED	1½"	45°	NON-DRAINABLE	HORIZONTAL	50%	-	-
ELF211	6" x 10"	UNLIMITED	2"	45°	NON-DRAINABLE	HORIZONTAL	42%	-	-
ELF375X	12" x 12"	UNLIMITED	4"	37½°	NON-DRAINABLE	HORIZONTAL	54%	✓	✓
ELF375XH	12" x 12"	UNLIMITED	4"	37½°	NON-DRAINABLE	HORIZONTAL	54%	✓	✓
ELF375DXH	12" x 12"	UNLIMITED	4"	37½°	DRAINABLE	HORIZONTAL	54%	✓	✓
ELF445DX	12" x 12"	UNLIMITED	4"	45°	DRAINABLE	HORIZONTAL	54%	✓	✓
ELF445DXH	12" x 12"	UNLIMITED	4"	45°	DRAINABLE	HORIZONTAL	52%	✓	✓
ELF6350DMP	12" x 12"	UNLIMITED	6"	35°	DRAINABLE	HORIZONTAL	62%	✓	✓
ELF6375X	12" x 12"	UNLIMITED	6"	37½°	NON-DRAINABLE	HORIZONTAL	55%	✓	✓
ELF6375XH	12" x 12"	UNLIMITED	6"	37½°	NON-DRAINABLE	HORIZONTAL	55%	✓	✓
ELF6425DD	12" x 12"	UNLIMITED	6"	42½°	DUAL-DRAINABLE	HORIZONTAL	51%	✓	✓
ELF6811S	12" x 12"	UNLIMITED	6"	45°	NON-DRAINABLE	HORIZONTAL	49%	-	-
ELF811DD	12" x 12"	UNLIMITED	4"	45°	DRAINABLE	HORIZONTAL	44%	✓	✓
ELF811SH	12" x 12"	UNLIMITED	4"	45°	NON-DRAINABLE	HORIZONTAL	44%	-	-
L375D	12" x 12"	UNLIMITED	4"	37½°	DRAINABLE	HORIZONTAL	50%	✓	✓

\*More models at [www.ruskin.com](http://www.ruskin.com)

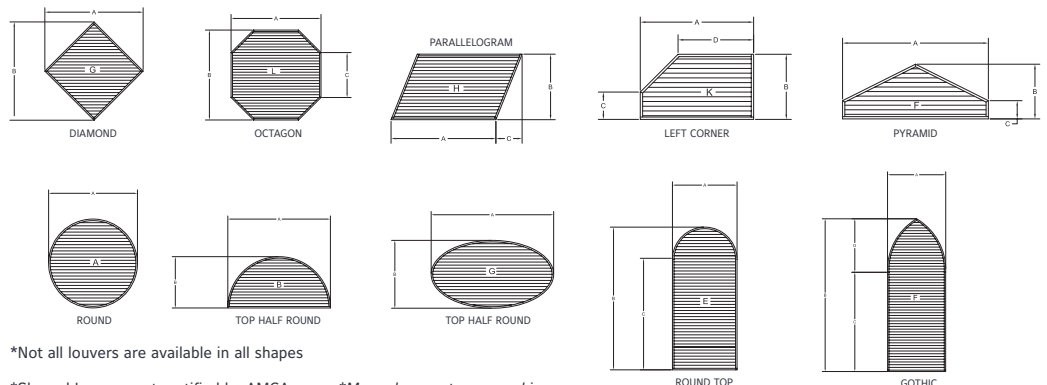
\*For the most current catalog information please visit [www.ruskin.com](http://www.ruskin.com), or use the Ruskin® Online Louver Selection Tool.

## RUSKIN® LOUVER COLORS



\*We can match any color!

## LOUVER SHAPES



\*Not all louvers are available in all shapes

\*Shaped Louvers not certified by AMCA

\*More shapes at [www.ruskin.com](http://www.ruskin.com)