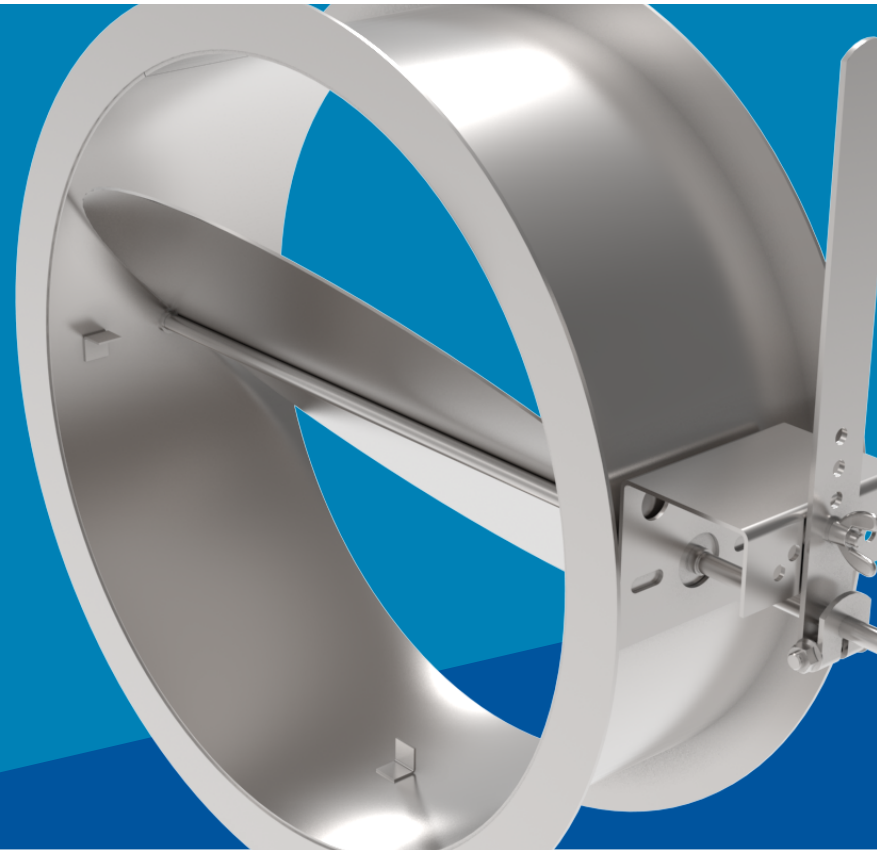


## Ruskin® Quick Product Selection Tables:

# Industrial Air Control Solutions

The Quick Product Selection Reference Guide assists in selecting the appropriate Ruskin® Product for your application.

- » Backdraft Dampers
- » Round Backdraft Dampers
- » Fiberglass Backdraft Dampers
- » Round Fiberglass Backdraft dampers
- » Blast Suppression Dampers
- » Bubble-Tight Dampers
- » Control Dampers
- » Fiberglass Control Dampers
- » Round Control Dampers
- » Fiberglass Round Control Dampers
- » Pressure Relief Dampers
- » Inlet Vane Dampers
- » Fiberglass Inlet Vane Dampers
- » Radial Vane Diffusers
- » Smoke Dampers
- » Tunnel Fire Dampers



**DISCLAIMER:** The Ruskin® brand's (hereinafter "Ruskin") content, functionality and product information provided in this data file, including Ruskin design and dimensions (collectively referred to herein as "Ruskin's Information") are offered solely to you as a convenience and are for your information only. Ruskin's Information is not a replacement for a professional engineering evaluation of the situation.

**Industrial Air Control Solutions > Backdraft Dampers**

Model	Frame Type	Frame Depth <sup>1</sup>	Blade Type	Max System Conditions <sup>1</sup>			Section Size (in.) <sup>2</sup>		Submittal	CSI 3-Part Spec	CAD Install Drawing	3D Revit® Files
				Pressure	Velocity	Temperature	Minimum	Maximum				
		in (mm)		in. wg (kPa)	fpm (mps)	°F (°C)	in (mm)	in (mm)				
<a href="#">CBS7</a>	Channel, Flanged	8" (203)	V-Groove	10 (2.5)	3000 (15.2)	250 (121)	6" x 6" (152 x 152)	48" x 96" (1219 x 2438)				
<a href="#">CBS8</a>	Channel, Flanged	8" (203)	Airfoil	15 (3.7)	4000 (20.3)	250 (121)	6" x 6" (152 x 152)	60" x 96" (1524 x 2438)				
<a href="#">CBS92</a>	Channel, Flanged	9" (229)	Airfoil	14 (3.5)	4000 (20.3)	250 (121)	6" x 6" (152 x 152)	60" x 96" (1524 x 2438)				

**Industrial Air Control Solutions > Round Backdraft Dampers**

Model	Frame Type	Frame Depth <sup>1</sup>	Blade Type	Max System Conditions <sup>1</sup>			Section Size (in.) <sup>2</sup>		Submittal	CSI 3-Part Spec	CAD Install Drawing	3D Revit® Files
				Pressure	Velocity	Temperature	Minimum	Maximum				
		in (mm)		in. wg (kPa)	fpm (mps)	°F (°C)	in (mm)	in (mm)				
<a href="#">CBDR82</a>	Channel, Flanged	Varies by Size	Round	10 (2.5)	6000 (30.5)	250 (121)	6" (152)	60" (1524)		-	-	-
<a href="#">CBDR92</a>	Channel, Flanged	Varies by Size	Round	17 (4.2)	6000 (30.5)	250 (121)	6" (152)	44" (1118)		-	-	-
<a href="#">NRBD100</a>	Channel	4.25" (114)	Butterfly	10 (2.5)	4000 (20.3)	250 (121)	18" (457)	96" (2438)		-	-	-

NOTE 1 - Review product data sheets for details

NOTE 2 - Consult Ruskin for sizes and performance options beyond shown herein

**Industrial Air Control Solutions > Fiberglass Backdraft Dampers**

Model	Frame Type	Frame Depth <sup>1</sup>	Blade Type	Max System Conditions <sup>1</sup>			Section Size (in.) <sup>2</sup>		Submittal	CSI 3-Part Spec	CAD Install Drawing	3D Revit® Files
				Pressure	Velocity	Temperature	Minimum	Maximum				
		in (mm)		in. wg (kPa)	fpm (mps)	°F (°C)	in (mm)	in (mm)				
<a href="#">426</a>	Channel, Flanged	8" (203)	V-Groove	10 (2.5)	2000 (10.2)	200 (94)	6" x 8" (152 x 203)	48" x 72" (1219 x 1829)		-		
<a href="#">426AF</a>	Channel, Flanged	8" (203)	Airfoil	16 (4)	4000 (20.3)	200 (94)	6" x 8" (152 x 203)	48" x 72" (1219 x 1829)				

**Industrial Air Control Solutions > Round Fiberglass Backdraft Dampers**

Model	Frame Type	Frame Depth <sup>1</sup>	Blade Type	Max System Conditions <sup>1</sup>			Section Size (in.) <sup>2</sup>		Submittal	CSI 3-Part Spec	CAD Install Drawing	3D Revit® Files
				Pressure	Velocity	Temperature	Minimum	Maximum				
		in (mm)		in. wg (kPa)	fpm (mps)	°F (°C)	in (mm)	in (mm)				
<a href="#">CBDR912</a>	Channel, Flanged	Varies by Size	Flat	10 (2.5)	6000 (30.5)	200 (94)	6" (152)	48" (1219)		-	-	
CBDR914	Channel, Flanged	Varies by Size	Flat	30 (7.5)	6000 (30.5)	200 (94)	6" (152)	48" (1219)				

**Industrial Air Control Solutions > Blast Suppression Dampers**

Model	Frame Type	Frame Depth <sup>1</sup>	Blade Type	Max System Conditions <sup>1</sup>			Section Size (in.) <sup>2</sup>		Submittal	CSI 3-Part Spec	CAD Install Drawing	3D Revit® Files
				Pressure	Velocity	Temperature	Minimum	Maximum				
		in (mm)		in. wg (kPa)	fpm (mps)	°F (°C)	in (mm)	in (mm)				
<a href="#">CBS8BL</a>	Channel, Flanged	12" (305)	Airfoil	1220 (44psi)	4000 (20.3)	250 (121)	6" x 6" (152 x 152)	36" x 96" (914 x 2438)			-	-

NOTE 1 - Review product data sheets for details

NOTE 2 - Consult Ruskin for sizes and performance options beyond shown herein

**Industrial Air Control Solutions > Bubble-Tight Dampers**

Model	Frame Type	Frame Depth <sup>1</sup>	Blade Type	Max System Conditions <sup>1</sup>			Section Size (in.) <sup>2</sup>		Submittal	CSI 3-Part Spec	CAD Install Drawing	3D Revit® Files
				Pressure	Velocity	Temperature	Minimum	Maximum				
		in (mm)		in. wg (kPa)	fpm (mps)	°F (°C)	in (mm)	in (mm)				
<a href="#">BTR-250</a>	Channel, Flanged	Varies by Size	Round	10 (2.5)	4000 (20.3)	250 (121)	12" (305)	36" (914)		-	-	-
<a href="#">BTR82</a>	Channel, Flanged	Varies by Size	Round	10 (2.5)	4000 (20.3)	250 (121)	6" (152)	36" (914)		-	-	-
<a href="#">BTO82</a>	Channel, Flanged	Varies by Size	Oval	10 (2.5)	4000 (20.3)	250 (121)		36" (914)	-	-	-	-
<a href="#">BTR92</a>	Channel, Flanged	Varies by Size	Round	30 (7.5)	7000 (35.6)	250 (121)	6" (152)	48" (1219)			-	
<a href="#">BTO92</a>	Channel, Flanged	Varies by Size	Oval	30 (7.5)	7000 (35.6)	250 (121)	6" (152)	48" (1219)			-	
<a href="#">PSD</a>	Channel, Flanged	12" (305)	Dish	10 (2.5)	2000 (10.2)	250 (121)	4" (102)	42" x 42" / 42" dia. (1067 x 1067) /1067 dia.			-	

NOTE 1 - Review product data sheets for details

NOTE 2 - Consult Ruskin for sizes and performance options beyond shown herein

**Industrial Air Control Solutions > Control Dampers**

Model	Frame Type	Frame Depth <sup>1</sup>	Blade Type	Max System Conditions <sup>1</sup>			Section Size (in.) <sup>2</sup>		Submittal	CSI 3-Part Spec	CAD Install Drawing	3D Revit® Files
				Pressure	Velocity	Temperature	Minimum	Maximum				
		in (mm)		in. wg (kPa)	fpm (mps)	°F (°C)	in (mm)	in (mm)				
<a href="#">CD30VG1</a>	Channel	3" (76)	V-Groove	8 (2)	3000 (15.2)	250 (121)	5" x 5" (127 x 127)	48" x 96" (1219 x 2438)				
<a href="#">CD30VG2</a>	Channel	3" (76)	V-Groove	20 (5)	3500 (17.8)	250 (121)	5" x 5" (127 x 127)	48" x 96" (1219 x 2438)				
<a href="#">CD30AF1</a>	Channel	3" (76)	Airfoil	24 (6)	4000 (20.3)	250 (121)	5" x 5" (127 x 127)	48" x 96" (1219 x 2438)				
<a href="#">CD30AF2</a>	Channel	3" (76)	Airfoil	32 (8)	6000 (30.5)	250 (121)	5" x 5" (127 x 127)	60" x 96" (1524 x 2438)				
<a href="#">CD80VG1</a>	Channel, Flanged	8" (203)	V-Groove	8 (2)	3000 (15.2)	250 (121)	6" x 6" (152 x 152)	48" x 96" (1219 x 2438)				
<a href="#">CD80VG2</a>	Channel, Flanged	8" (203)	V-Groove	20 (5)	3000 (15.2)	250 (121)	6" x 6" (152 x 152)	48" x 96" (1219 x 2438)				
<a href="#">CD80AF1</a>	Channel, Flanged	8" (203)	Airfoil	24 (6)	6000 (30.5)	250 (121)	6" x 6" (152 x 152)	48" x 96" (1219 x 2438)				
<a href="#">CD80AF2</a>	Channel, Flanged	8" (203)	Airfoil	32 (8)	6000 (30.5)	250 (121)	6" x 6" (152 x 152)	60" x 96" (1524 x 2438)				
<a href="#">CD80AF3</a>	Channel, Flanged	8" (203)	Airfoil	34 (8.5)	6000 (30.5)	250 (121)	6" x 6" (152 x 152)	60" x 96" (1524 x 2438)				
<a href="#">CD80AF4</a>	Channel, Flanged	8" (203)	Airfoil	44 (10.9)	6000 (30.5)	250 (121)	6" x 6" (152 x 152)	60" x 96" (1524 x 2438)				

NOTE 1 - Review product data sheets for details

NOTE 2 - Consult Ruskin for sizes and performance options beyond shown herein

**Industrial Air Control Solutions > Control Dampers**

Model	Frame Type	Frame Depth <sup>1</sup>	Blade Type	Max System Conditions <sup>1</sup>			Section Size (in.) <sup>2</sup>		Submittal	CSI 3-Part Spec	CAD Install Drawing	3D Revit® Files
				Pressure	Velocity	Temperature	Minimum	Maximum				
		in (mm)		in. wg (kPa)	fpm (mps)	°F (°C)	in (mm)	in (mm)				
<a href="#">CD82HT</a>	Channel, Flanged	8" (203)	Airfoil	21 (5.2)	4000 (20.3)	750 (399)	6" x 6" (152 x 152)	60" x 96" (1524 x 2438)				
<a href="#">CD102</a>	Channel, Flanged	8" (203)	Airfoil	24 (6)	5000 (25.4)	300 (149)	6" x 6" (152 x 152)	60" x 96" (1524 x 2438)				
<a href="#">OD102</a>	Channel, Flanged	8" (203)	Airfoil	24 (6)	5000 (25.4)	300 (149)	6" x 6" (152 x 152)	60" x 96" (1524 x 2438)				

**Industrial Air Control Solutions > Fiberglass Control Dampers**

Model	Frame Type	Frame Depth <sup>1</sup>	Blade Type	Max System Conditions <sup>1</sup>			Section Size (in.) <sup>2</sup>		Submittal	CSI 3-Part Spec	CAD Install Drawing	3D Revit® Files
				Pressure	Velocity	Temperature	Minimum	Maximum				
		in (mm)		in. wg (kPa)	fpm (mps)	°F (°C)	in (mm)	in (mm)				
<a href="#">1104</a>	Channel	4" (102)	V-Groove	20 (5)	2000 (10.2)	200 (94)	8" x 8" (203 x 203)	48" x 72" (1219 x 1829)				-
<a href="#">1108</a>	Channel, Flanged	8" (203)	V-Groove	20 (5)	2000 (10.2)	200 (94)	8" x 8" (203 x 203)	48" x 72" (1219 x 1829)				-
<a href="#">1108AF</a>	Channel, Flanged	8" (203)	Airfoil	28 (7)	4000 (20.3)	200 (94)	6" x 8" (152 x 203)	48" x 72" (1219 x 1829)				-

NOTE 1 - Review product data sheets for details

NOTE 2 - Consult Ruskin for sizes and performance options beyond shown herein

**Industrial Air Control Solutions > Round Control Dampers**

Model	Frame Type	Frame Depth <sup>1</sup>	Blade Type	Max System Conditions <sup>1</sup>			Section Size (in.) <sup>2</sup>		Submittal	CSI 3-Part Spec	CAD Install Drawing	3D Revit® Files
				Pressure	Velocity	Temperature	Minimum	Maximum				
		in (mm)		in. wg (kPa)	fpm (mps)	°F (°C)	in (mm)	in (mm)				
<a href="#">CDRS82</a>	Channel, Flanged	8" (203)	Round	4 (1)	4000 (20.3)	250 (121)	4" (102)	48" (1219)				
<a href="#">CDR82</a>	Channel, Flanged	8" (203)	Round	10 (2.5)	6000 (30.5)	250 (121)	4" (102)	60" (1524)				
<a href="#">CDR92</a>	Channel, Flanged	9" (229)	Round	17 (4.2)	6000 (30.5)	250 (121)	4" (102)	72" (1829)				
<a href="#">CDR93</a>	Channel, Flanged	Varies by Size	Round	25 (6.2)	7000 (35.6)	250 (121)	4" (102)	72" (1829)			-	-
<a href="#">CDR94</a>	Channel, Flanged	Varies by Size	Round	40 (10)	7000 (35.6)	250 (121)	4" (102)	72" (1829)			-	-
<a href="#">CDR192</a>	Channel, Flanged	Varies by Size	Round	20 (5)	7000 (35.6)	250 (121)	4" (102)	72" (1829)				
<a href="#">CDR195</a>	Channel, Flanged	Varies by Size	Round	20 (5)	5000 (25.4)	500 (260)	12" (305)	60" (1524)				

NOTE 1 - Review product data sheets for details

NOTE 2 - Consult Ruskin for sizes and performance options beyond shown herein

**Industrial Air Control Solutions > Fiberglass Round Control Dampers**

Model	Frame Type	Frame Depth <sup>1</sup>	Blade Type	Max System Conditions <sup>1</sup>			Section Size (in.) <sup>2</sup>		Submittal	CSI 3-Part Spec	CAD Install Drawing	3D Revit® Files
				Pressure	Velocity	Temperature	Minimum	Maximum				
		in (mm)		in. wg (kPa)	fpm (mps)	°F (°C)	in (mm)	in (mm)				
<a href="#">911</a>	Channel	Varies by Size	Round	5 (1.2)	2000 (10.2)	200 (94)	4" (102)	48" (1219)		-		-
<a href="#">912</a>	Channel, Flanged	Varies by Size	Round	10 (2.5)	6000 (30.5)	200 (94)	12" (305)	66" (1676)				
<a href="#">914</a>	Channel, Flanged	Varies by Size	Round	30 (7.5)	6000 (30.5)	200 (94)	12" (305)	66" (1676)				

**Industrial Air Control Solutions > Pressure Relief Dampers**

Model	Frame Type	Frame Depth <sup>1</sup>	Blade Type	Max System Conditions <sup>1</sup>			Section Size (in.) <sup>2</sup>		Submittal	CSI 3-Part Spec	CAD Install Drawing	3D Revit® Files
				Pressure	Velocity	Temperature	Minimum	Maximum				
		in (mm)		in. wg (kPa)	fpm (mps)	°F (°C)	in (mm)	in (mm)				
<a href="#">PDR92</a>	Channel, Flanged	Varies by Size	Round	20 (5)	6000 (30.5)	250 (121)	16" (406)	52" (1321)				

NOTE 1 - Review product data sheets for details

NOTE 2 - Consult Ruskin for sizes and performance options beyond shown herein



**Industrial Air Control Solutions > Inlet Vane Dampers**

Model	Frame Type	Frame Depth <sup>1</sup>	Blade Type	Max System Conditions <sup>1</sup>			Section Size (in.) <sup>2</sup>		Submittal	CSI 3-Part Spec	CAD Install Drawing	3D Revit® Files
				Pressure	Airflow Rate	Temperature	Minimum	Maximum				
		in (mm)		in. wg (kPa)	cfm (cms)	°F (°C)	in (mm)	in (mm)				
<a href="#">IVD</a>	Channel, Flanged	Varies by Size	Vane	8 (2)	Varies by Size	200 (93)	12" (305)	65" (1651)				

**Industrial Air Control Solutions > Fiberglass Inlet Vane Dampers**

Model	Frame Type	Frame Depth <sup>1</sup>	Blade Type	Max System Conditions <sup>1</sup>			Section Size (in.) <sup>2</sup>		Submittal	CSI 3-Part Spec	CAD Install Drawing	3D Revit® Files
				Pressure	Airflow Rate	Temperature	Minimum	Maximum				
		in (mm)		in. wg (kPa)	cfm (cms)	°F (°C)	in (mm)	in (mm)				
<a href="#">851FG</a>	Channel, Flanged	Varies by Size	Vane	4 (1)	Varies by Size	200 (93)	12" (305)	72" (1829)				

**Industrial Air Control Solutions > Radial Vane Diffusers**

Model	Frame Type	Frame Depth <sup>1</sup>	Blade Type	Max System Conditions <sup>1</sup>			Section Size (in.) <sup>2</sup>		Submittal	CSI 3-Part Spec	CAD Install Drawing	3D Revit® Files
				Pressure	Velocity	Temperature	Minimum	Maximum				
		in (mm)		in. wg (kPa)	fpm (mps)	°F (°C)	in (mm)	in (mm)				
<a href="#">RVD</a>	Angle, Single Flange	4" (102)	Vane	4 (1)	2000 (10.2)	200 (93)	12" (305)	60" (1524)			-	-

NOTE 1 - Review product data sheets for details

NOTE 2 - Consult Ruskin for sizes and performance options beyond shown herein

**Industrial Air Control Solutions > Smoke Dampers**

Model	Frame Type	Frame Depth <sup>1</sup>	Blade Type	Max System Conditions <sup>1</sup>			Section Size (in.) <sup>2</sup>		Submittal	CSI 3-Part Spec	CAD Install Drawing	3D Revit® Files
				Pressure	Velocity	Temperature	Minimum	Maximum				
		in (mm)		in. wg (kPa)	fpm (mps)	°F (°C)	in (mm)	in (mm)				
<a href="#">SD102</a>	Channel, Flanged	8" (203)	Airfoil	6 (1.5)	2000 (10.2)	250 (121)	12" X 6" (305 x 152)	36" x 48" (914 x 1219)				

**Industrial Air Control Solutions > Tunnel Fire Dampers**

Model	Frame Type	Frame Depth <sup>1</sup>	Blade Type	Max System Conditions <sup>1</sup>			Section Size (in.) <sup>2</sup>		Submittal	CSI 3-Part Spec	CAD Install Drawing	3D Revit® Files
				Pressure	Velocity	Temperature	Minimum	Maximum				
		in (mm)		in. wg (kPa)	fpm (mps)	°F (°C)	in (mm)	in (mm)				
<a href="#">TFD80</a>	Channel, Flanged	8" (203)	Airfoil	24 (6)	4000 (20.3)	572 (300)	12" x 12" (305 x 305)	86.61" x 84.65" (2200 x 2150)			-	

NOTE 1 - Review product data sheets for details

NOTE 2 - Consult Ruskin for sizes and performance options beyond shown herein