

# GENERIC OPERABLE LOUVERS

## Installation Guide



### LIST OF MODELS AFFECTED

ELC6375DAX	ELM90H	ELM811D
ELC6375DXW	ELM90HFA	ELM6375DX
ELC445D	ELM811	ELM6DW
ELM90	ELM811H	ELM6375X

For enquiries, Please contact Louver Sales: [louversales@ruskin.com](mailto:louversales@ruskin.com)

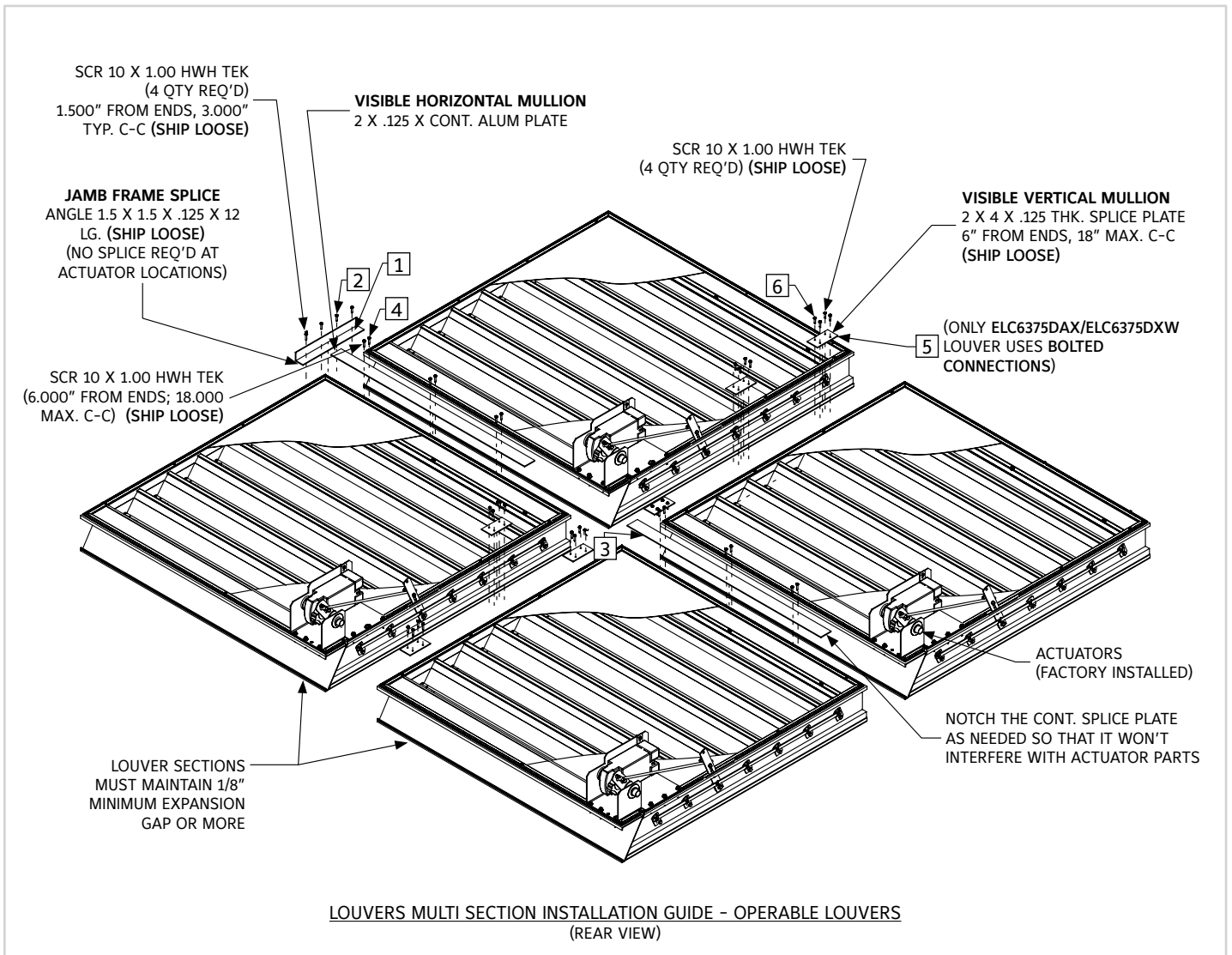
### PRE-ASSEMBLY INSTRUCTIONS:

1. Remove louvers & accessories from shipping containers & inspect for damage. Single section units will be shipped fully assembled. Multi-section units will be shipped in shipping sections to be assembled at the job site. Large multi section units may be packaged in more than one shipping crate.
2. Care must be taken when handling components. Lift louver sections carefully by the supports or frames. Avoid lifting by louver blades. Do not apply excessive force to any point of the section. Lift at multiple points, if necessary to avoid deformation or racking of components.
3. Inspect louvers & components after removal from containers. Verify that all components & fasteners are accounted for. Report any shortages immediately to Ruskin manufacturing.
4. Inspect the openings that the louvers will be installed in. Verify that the openings are square & that the unit will fit prior to installation.
5. Contact your local Ruskin representative if you have questions pertaining to this installation or other field modifications.
6. Ensure that you have received ship loose parts & a box with hardware.

### ASSEMBLY PROCEDURE:

1. Install extended sill in the opening (if applicable).
2. Locate ship loose hardware required for louver multi-section assembly.
3. Position the louver sections faced down on a level, non-abrasive surface in the configuration they will be assembled in. Reference the tag numbers on each section to ensure the sections are in correct order.
4. Refer to appropriate exploded details for splice hardware identification & location. Now fasten the sections together at frames. (Supports are pre-drilled at plant for ease).
5. If perimeter clips or continuous angles are to be installed, locate & anchor them in the opening. (Reference clip angle installation guide for instructions).
6. Level the louver assembly both horizontally & vertically in the opening using shims. (Shims not provided by Ruskin).
7. Position the louver in the opening so that the desired sealant joint will be maintained around the perimeter of louver.
8. After louver is secured, install backer rod & sealant around louver perimeter. (Sealant not provided by Ruskin).

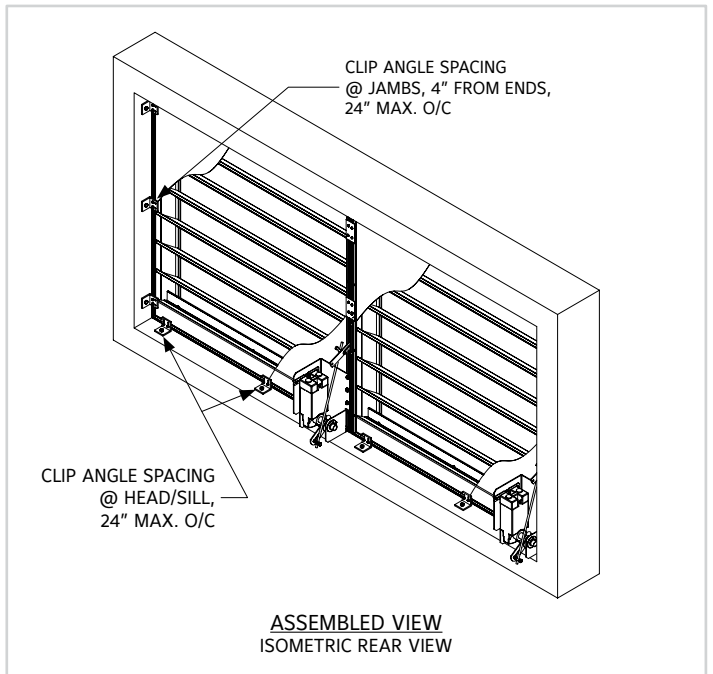
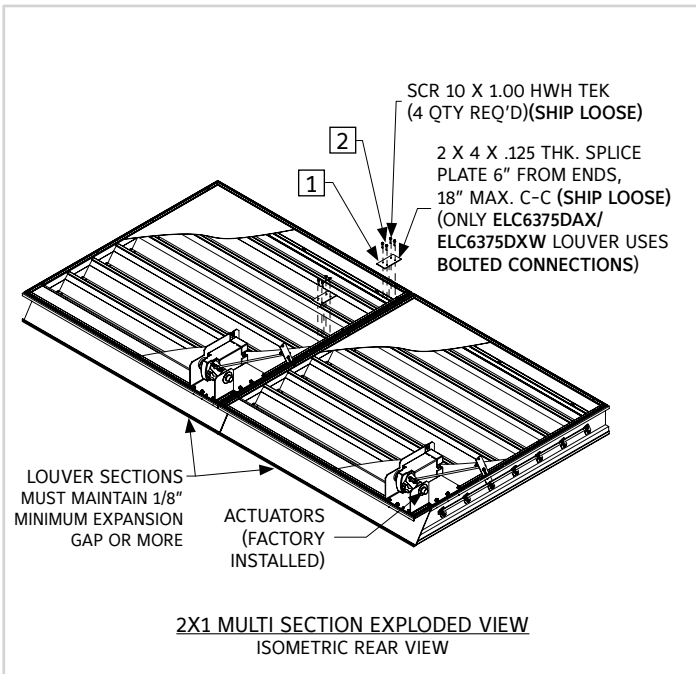
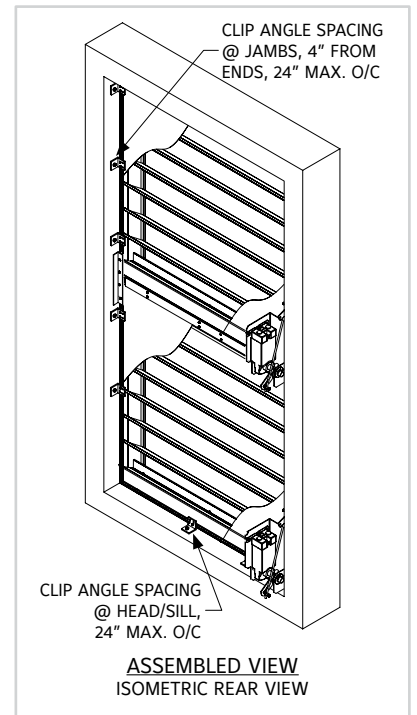
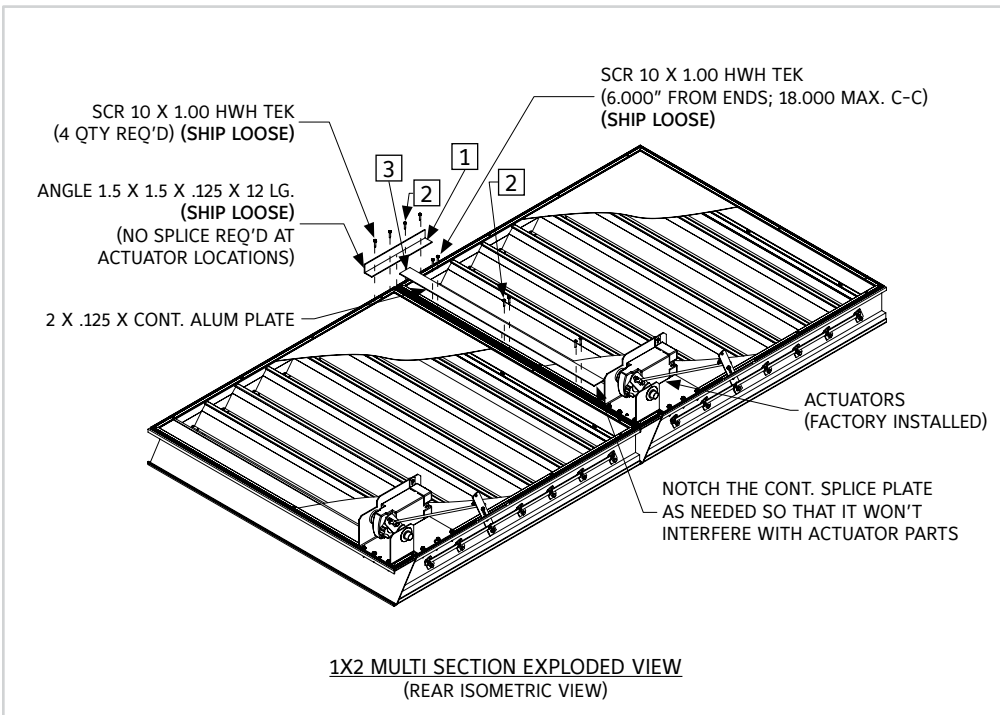
## REFERENCE IMAGES



ITEM #	DESCRIPTION	QTY.	PART #	MATERIAL
<b>PARTS LIST TABLE - JAMB FRAME SPLICE (SHIP LOOSE)</b>				
1	ANGLE 1.5 X 1.5 X .125 X 12 LG.	1	360437300	EXT ALUM 6063-T5 .125" THK
2	SCR 10 X 1.00 HWH TEK	4	380430941	410 SS/ZC
<b>PARTS LIST TABLE - VISIBLE HORZ. MULLION (SHIP LOOSE)</b>				
3	2 X .125 THK CONT. SPLICE PLATE	VARIES	341358M00	EXT ALUM 6063-T6
4	SCR 10 X 1.00 HWH TEK	VARIES	380430941	410 SS/ZC
<b>PARTS LIST TABLE - VISIBLE VERTICAL MULLION (SHIP LOOSE)</b>				
5	2 X 4 X .125 THK SPLICE PLATE	1	360431136	EXT ALUM 6063-T6
6	SCR 10 X 1.00 HWH TEK	4	380430941	410 SS/ZC

\*\* Square balloons indicates ship loose parts

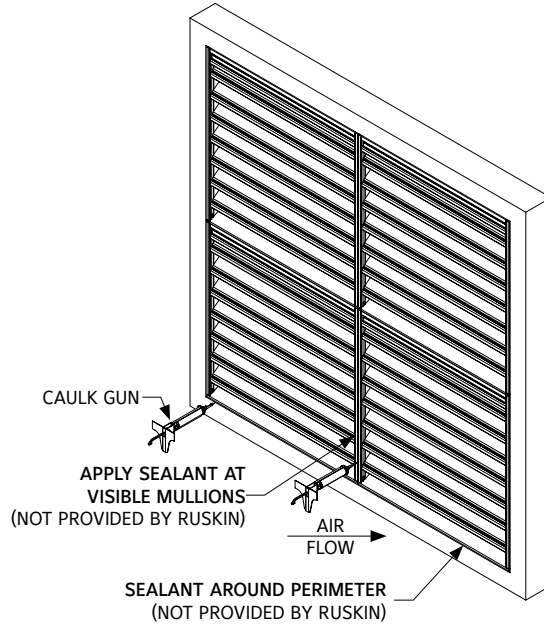
# MULTI SECTION INSTALLATION



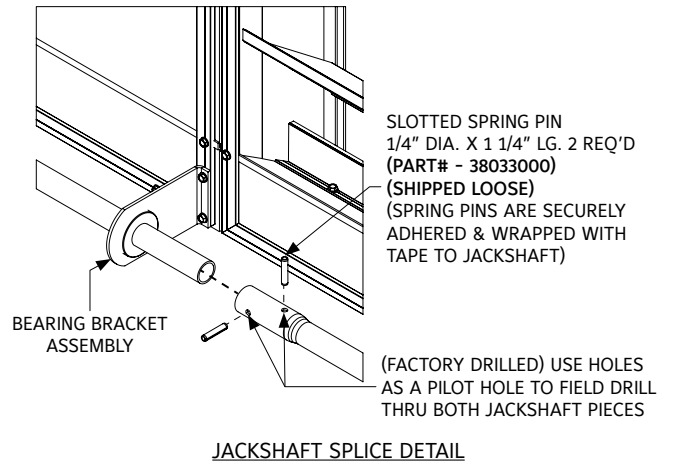
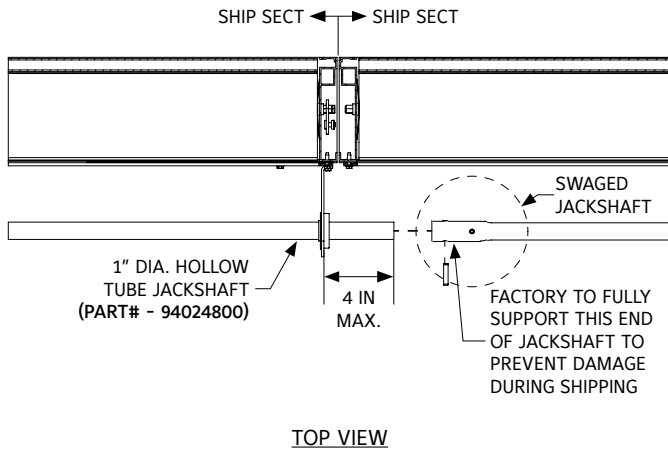
ITEM #	DESCRIPTION	QTY.	PART #	MATERIAL
<b>PARTS LIST TABLE - 1X2 MULTI SECTION (SHIP LOOSE)</b>				
1	ANGLE 1.5 X 1.5 X .125 X 12 LG.	1	360437300	EXT ALUM 6063-T6
2	SCR 10 X 1.00 HWH TEK	4	380430941	410 SS/ZC
3	2 X .125 THK CONT. SPLICE PLATE	VARIES	341358M00	EXT ALUM 6063-T6
4	SCR 10 X 1.00 HWH TEK	VARIES	380430941	410 SS/ZC
<b>PARTS LIST TABLE - 2X1 MULTI SECTION (SHIP LOOSE)</b>				
1	2 X 4 X .125 THK SPLICE PLATE	1	360431136	EXT ALUM 6063-T6
2	SCR 10 X 1.00 HWH TEK	4	380430941	410 SS/ZC

\*\* Attachments varies per louver  
 \*\* Square balloons indicates ship loose parts

# MULTI SECTION LOUVER ASSEMBLY



MULTI SECTION LOUVER ASSEMBLY  
ISOMETRIC FRONT VIEW (SEALANT / CAULK INFORMATION)



## LINKS TO IMPORTANT DOCUMENTS

### Document Title

Limited Warranty Document



3900 Doctor Greaves Road  
Grandview, MO 64030  
Website: [www.ruskin.com](http://www.ruskin.com)  
Phone: (816) 761-7476