

BOLTED MULLIONS, SPICE PLATES

Installation Guide



LIST OF MODELS AFFECTED

MODELS AFFECTED (TYPE I)	
MODEL	SPACING
ELF375DX	6.000" MAX. FROM ENDS; 19.000" MAX. C-C
ELF375DXH	6.000" MAX. FROM ENDS; 19.000" MAX. C-C
ELF375X	6.000" MAX. FROM ENDS; 19.000" MAX. C-C
ELF375XH	6.000" MAX. FROM ENDS; 19.000" MAX. C-C
ELF445DX	6.000" MAX. FROM ENDS; 19.000" MAX. C-C
ELF445DXH	6.000" MAX. FROM ENDS; 19.000" MAX. C-C
ELF837	6.000" MAX. FROM ENDS; 19.000" MAX. C-C
ELF81S30	6.000" MAX. FROM ENDS; 19.000" MAX. C-C
ELF811SH	6.000" MAX. FROM ENDS; 19.000" MAX. C-C
ELBD812	6.000" MAX. FROM ENDS; 19.000" MAX. C-C
ELBD813	6.000" MAX. FROM ENDS; 19.000" MAX. C-C
ELF811DD	6.000" MAX. FROM ENDS; 19.000" MAX. C-C
ELF6375X	6.000" MAX. FROM ENDS; 19.000" MAX. C-C
ELF6375XH	6.000" MAX. FROM ENDS; 19.000" MAX. C-C
ELF6375DX	6.000" MAX. FROM ENDS; 19.000" MAX. C-C
ELF6375DXH	6.000" MAX. FROM ENDS; 19.000" MAX. C-C
ELF6350DMP	6.000" MAX. FROM ENDS; 19.000" MAX. C-C
ELF6811/6811S	6.000" MAX. FROM ENDS; 19.000" MAX. C-C
EAL6811	6.000" MAX. FROM ENDS; 19.000" MAX. C-C
ELC6375DAX	6.000" MAX. FROM ENDS; 19.000" MAX. C-C
ELC6375DXD	6.000" MAX. FROM ENDS; 19.000" MAX. C-C
ELC6375DXW	6.000" MAX. FROM ENDS; 19.000" MAX. C-C
ELBD375I	6.000" MAX. FROM ENDS; 19.000" MAX. C-C
ELBD375E	6.000" MAX. FROM ENDS; 19.000" MAX. C-C
ELF6425DD (VIS. MULLION)	6.000" MAX. FROM ENDS; 18.000" MAX. C-C
ELF6425DD (ARCH. MULLION)	6.000" MAX. FROM ENDS; 18.000" MAX. C-C

MODELS AFFECTED (TYPE - II)	
MODEL	SPACING
ELF375DXD	6.000" MAX. FROM ENDS; 15.000" MAX. C-C
ELF375DFL	6.000" MAX. FROM ENDS; 12.000" MAX. C-C
ELF6375DXD	6.000" MAX. FROM ENDS; 18.000" MAX. C-C

MODELS AFFECTED (TYPE - III)	
MODEL	SPACING
ACL445	6.000" MAX. FROM ENDS; 18.000" MAX. C-C
ACL645	6.000" MAX. FROM ENDS; 18.000" MAX. C-C
ACL645D	6.000" MAX. FROM ENDS; 18.000" MAX. C-C
ACL845	6.000" MAX. FROM ENDS; 18.000" MAX. C-C
ACL1245	6.000" MAX. FROM ENDS; 18.000" MAX. C-C
ACL1245D	6.000" MAX. FROM ENDS; 18.000" MAX. C-C
ACL1245AFD	6.000" MAX. FROM ENDS; 18.000" MAX. C-C
ACL845AF	6.000" MAX. FROM ENDS; 18.000" MAX. C-C
ACL1245AF	6.000" MAX. FROM ENDS; 18.000" MAX. C-C

MODELS AFFECTED (TYPE - IV)	
ELF30V	ELM90
ELF40V	ELM90H
EME220DD	ELM90HFA
ELF520DD	ELM811
EME420DD/DDE	ELM811H
EME520DD/DDE	ELM811D
EME520V	ELM6375DX
EME5625	ELM6375X
EME6625	ELM6DW
AML6	EAL6811M
EME737	ELC445D

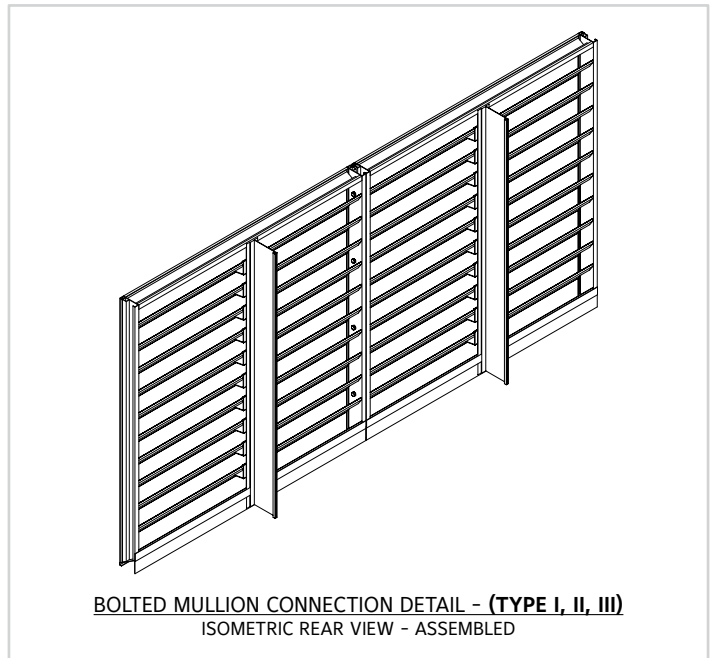
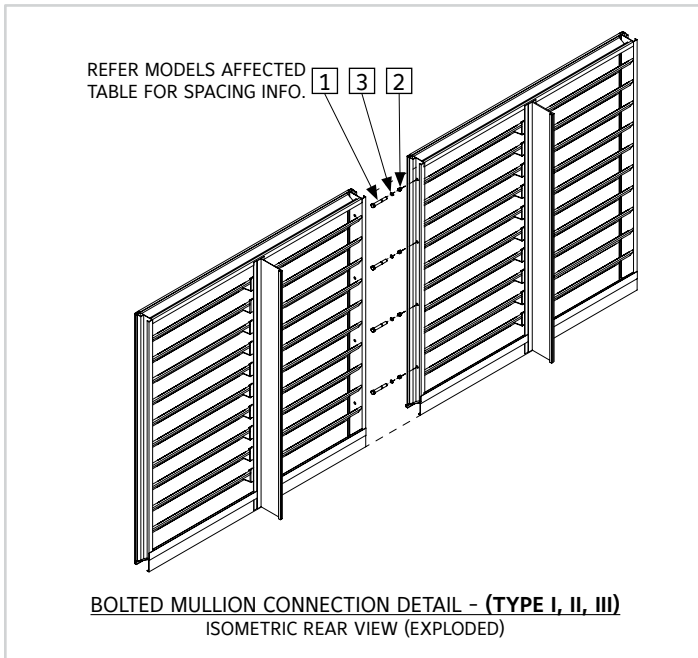
MODELS AFFECTED (TYPE - V)	
ELF15J	EME3625
ELF22V	EME3625DFL
ELF211	AML3
ELF211D	

For enquiries, Please contact Louver Sales: louversales@ruskin.com

ASSEMBLY PROCEDURE:

1. Locate ship loose hardware required for louver multi-section assembly.
2. Position the louver sections faced down on a level, non-abrasive surface in the configuration they will be assembled in. Reference the tag numbers on each section to ensure the sections are in correct order.
3. Refer to appropriate exploded details for splice hardware identification & location. Now fasten the sections together at frames. (Splice plates are pre-drilled at plant for ease of installation)
4. Installer must remove factory installed screen frame screws (wherever needed) prior to installing splice plates.
5. Apply caulk/sealant at visible mullions.

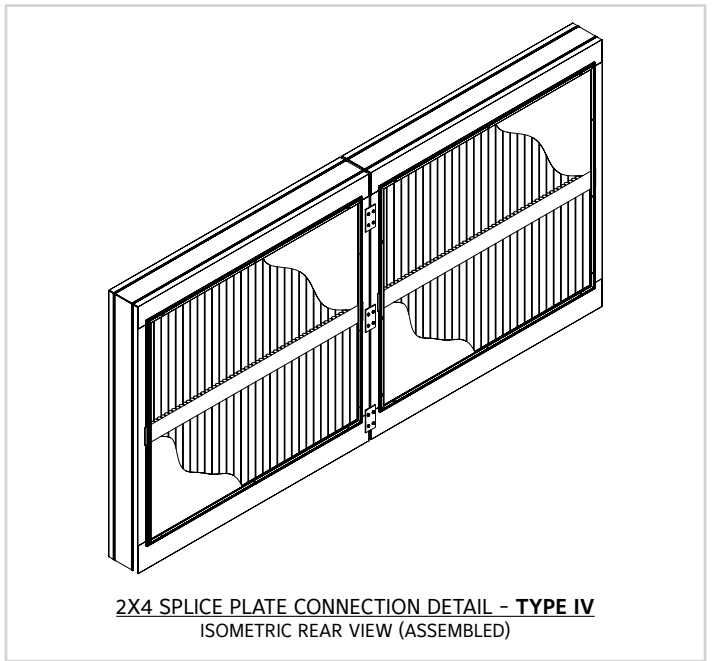
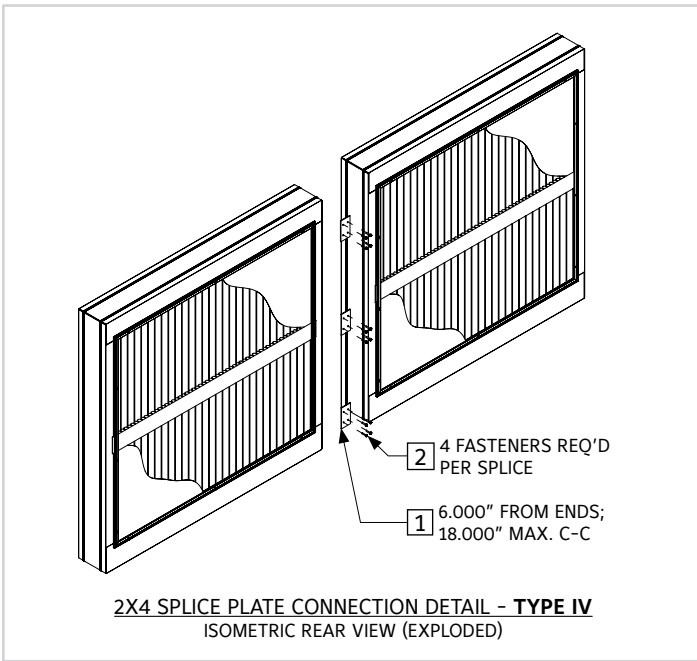
BOLTED MULLION CONNECTION DETAIL



ITEM #	DESCRIPTION	QTY.	PART #	MATERIAL
PARTS LIST TABLE - BOLTED MULLION CONNECTION DETAIL (TYPE I)				
1	BLT 1/4-20 X 2.75 HHD	VARIES	380431729	ZC
2	NUT NYLOCK 1/4-20	VARIES	38009500	ZC
3	WSH FLAT 1/4 USS	VARIES	38026300	ZC
PARTS LIST TABLE - BOLTED MULLION CONNECTION DETAIL (TYPE II)				
1	BLT 3/8-16 X 3.00 HHD	VARIES	380431604	ZC
2	NUT NYLOCK 3/8-16	VARIES	380430951	ZC
3	WSH FLAT 3/8 USS	VARIES	38026500	ZC
PARTS LIST TABLE - BOLTED MULLION CONNECTION DETAIL (TYPE III)				
1	BLT 3/8-16 X 4.00 HHD	VARIES	380431493	ZC
2	NUT NYLOCK 3/8-16	VARIES	380430951	ZC
3	WSH FLAT 3/8 USS	VARIES	38026500	ZC

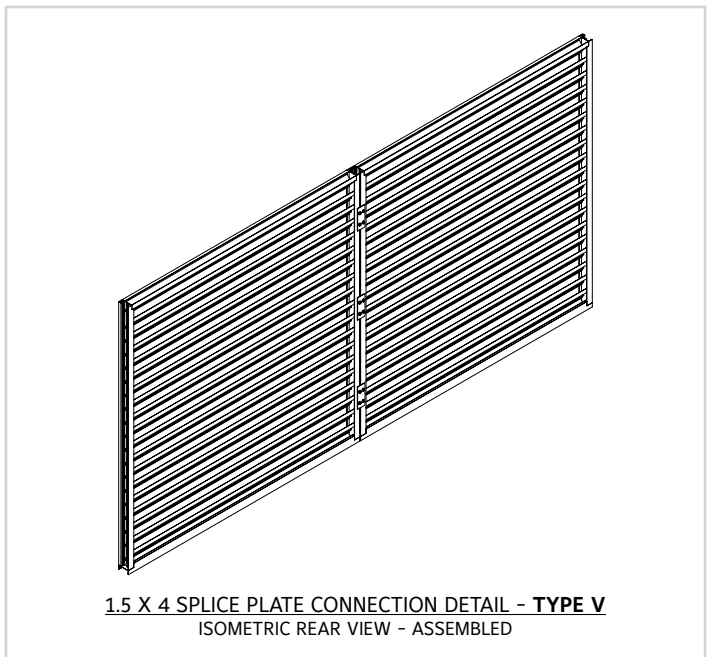
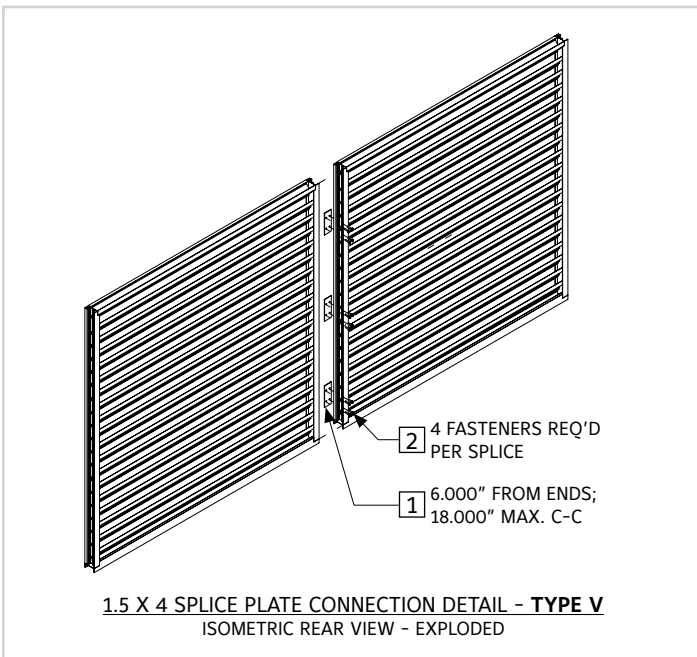
** Square balloons refer ship loose parts

SPLICE PLATE CONNECTION DETAIL



ITEM #	DESCRIPTION	QTY.	PART #	MATERIAL
PARTS LIST TABLE - SPLICE PLATE CONNECTION DETAIL (TYPE IV)				
1	SPL PLT LVR ALUM 2 X 4 X .125	1	360431136	6063-T6 EXTRUDED ALUM .125
2	SCR 10 X 1.00 HWH TEK	4	380430941	410SS/ZC

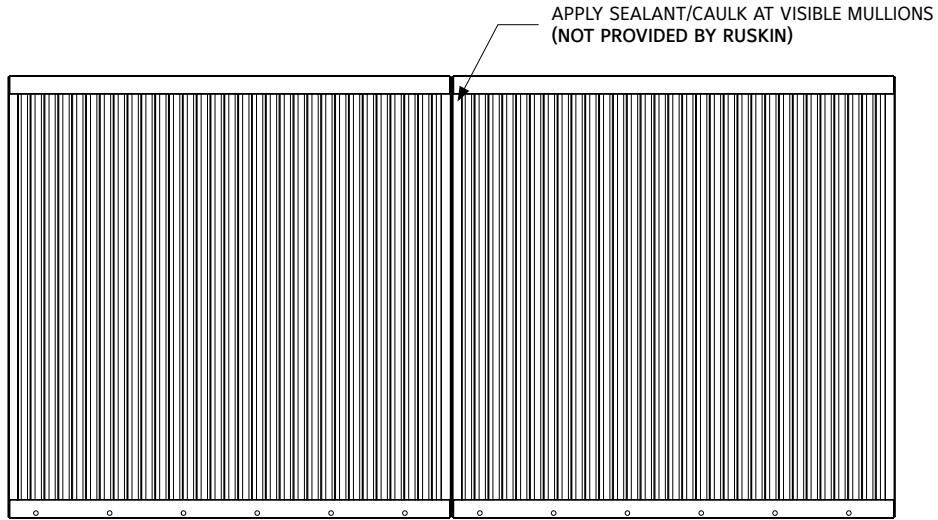
** Square balloons refer ship loose parts



ITEM #	DESCRIPTION	QTY.	PART #	MATERIAL
PARTS LIST TABLE - SPLICE PLATE CONNECTION DETAIL (TYPE V)				
1	SPL PLT LVR 1.5X4X.080	1	360435593	SHEET 5005 - H34 .080" THK
2	SCR 10 X 1.00 HWH TEK	4	380430941	410SS/ZC

** Square balloons refer ship loose parts

VISIBLE MULLION CONNECTION



VISIBLE MULLION CONNECTION
SEALANT DETAIL

i LINKS TO IMPORTANT DOCUMENTS

Document Title

Limited Warranty Document



3900 Doctor Greaves Road
Grandview, MO 64030
Website: www.ruskin.com
Phone: (816) 761-7476