

L6811S

Stationary Louver Roll Formed Steel



APPLICATION

The L6811S is a 6" stationary louver with high free area and economical galvanized steel construction. This louver has architecturally styled hidden mullions for an attractive appearance.

STANDARD CONSTRUCTION

Frame	6" (152) deep, 20 (1.4) gage galvanized steel.
Blades	20 gage (1.4) galvanized steel, J-style blades (formerly "weatherproof") are positioned at 45° angle and spaced approximately 6 11/16" (170) center to center.
Screen	1/2" (13) mesh 19 gage (1.1) galvanized screen in removable frame. Screen adds approximately 1/2" (13) to louver depth.
Finish	Mill.
Minimum Size	12" wide x 12" high (305 x 305).
Maximum Factory Assembly Size	64 sq. ft. (6m ²). Sections must fit into standard enclosed trailer 90" high x 240" deep (2286 x 6096).

FEATURES

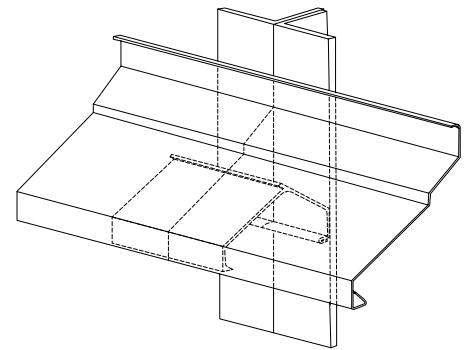
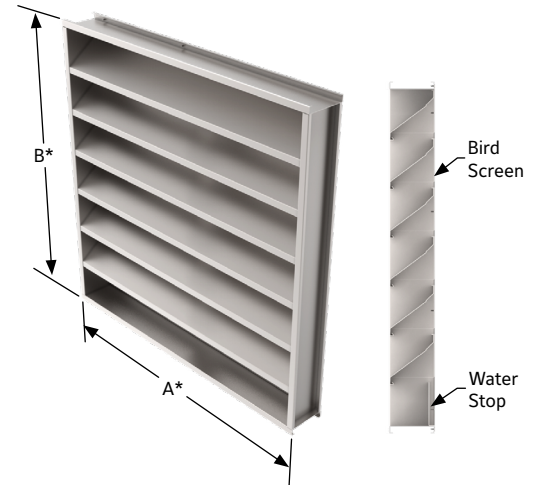
- ▶ 51% Free Area
- ▶ Architecturally styled hidden mullions for attractive appearance
- ▶ Economical galvanized steel construction

VARIATIONS

Variations to the basic design of this louver are available at additional cost. They include:

- ▶ Extended sill
- ▶ Hinged frame
- ▶ Front or rear security bars
- ▶ Filter racks
- ▶ A variety of bird and insect screens
- ▶ Optional finishes available at additional cost. Please see [Paint Finishes and Color Guide](#) and [Finish Type Model Chart](#) for more details. Contact louversales@ruskin.com with questions
- ▶ Heavier, 18 gage (1.2) and 16 gage (1.5) construction

Consult Ruskin for other special requirements.



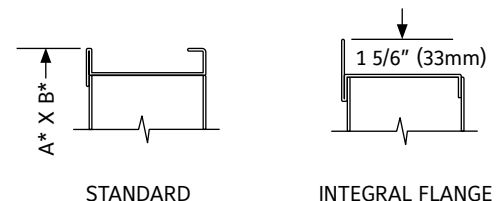
Architectural Style Hidden Mullion



5
YEAR LIMITED
WARRANTY

ISO9001
CERTIFIED

FRAME CONSTRUCTION



NOTES:

- Dimensions in inches, parenthesis () indicate millimeters.
- Units can be furnished actual size or with size deducts.

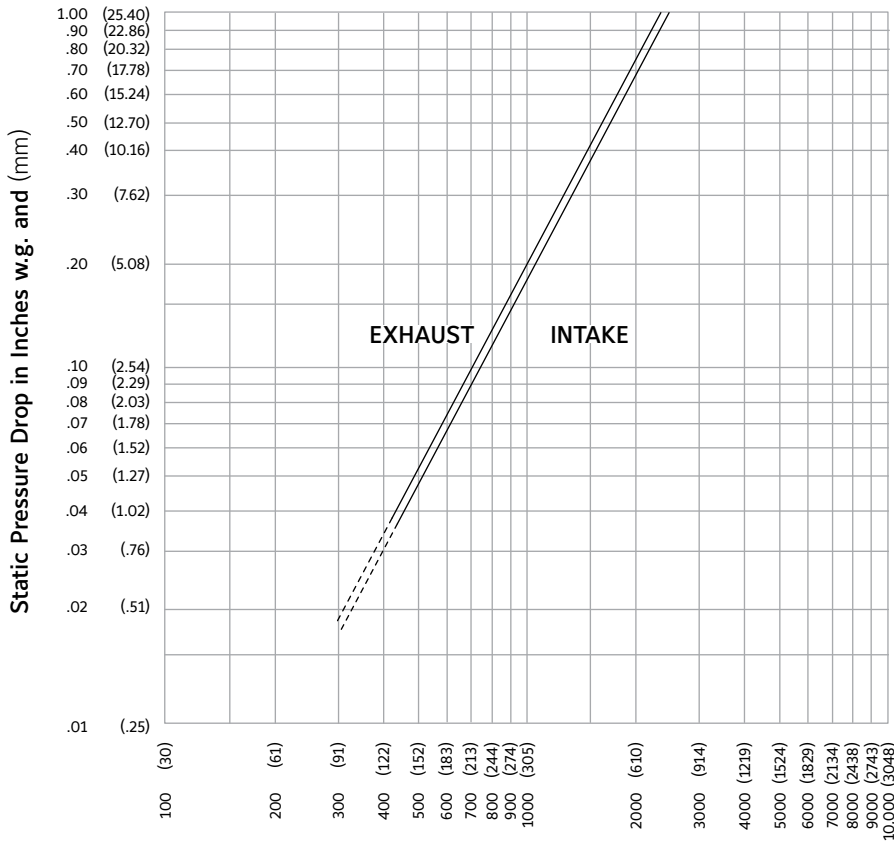
FREE AREA GUIDE

Free Area Guide shows free area in ft² and m² for various sizes of L6811S.

Width – Inches and Meters

	12	18	24	30	36	42	48	54	60	66	72	78	84	90	96	102	108	114	120
	0.30	0.46	0.61	0.76	0.91	1.07	1.22	1.37	1.52	1.68	1.83	1.98	2.13	2.29	2.44	2.59	2.74	2.90	3.05
12	0.21	0.34	0.47	0.60	0.72	0.85	0.98	1.11	1.23	1.36	1.49	1.62	1.74	1.87	2.00	2.13	2.25	2.38	2.51
0.30	0.02	0.03	0.04	0.06	0.07	0.08	0.09	0.10	0.11	0.13	0.14	0.15	0.16	0.17	0.19	0.20	0.21	0.22	0.23
18	0.44	0.71	0.97	1.24	1.50	1.77	2.03	2.30	2.56	2.83	3.09	3.36	3.62	3.89	4.15	4.42	4.68	4.95	5.21
0.46	0.04	0.07	0.09	0.12	0.14	0.16	0.19	0.21	0.24	0.26	0.29	0.31	0.34	0.36	0.39	0.41	0.44	0.46	0.48
24	0.67	1.07	1.48	1.88	2.28	2.69	3.09	3.49	3.89	4.30	4.70	5.10	5.50	5.91	6.31	6.71	7.12	7.52	7.92
0.61	0.06	0.10	0.14	0.17	0.21	0.25	0.29	0.32	0.36	0.40	0.44	0.47	0.51	0.55	0.59	0.62	0.66	0.70	0.74
30	0.90	1.44	1.98	2.52	3.06	3.60	4.14	4.68	5.22	5.76	6.30	6.84	7.39	7.93	8.47	9.01	9.55	10.09	10.63
0.76	0.08	0.13	0.18	0.23	0.28	0.34	0.39	0.44	0.49	0.54	0.59	0.64	0.69	0.74	0.79	0.84	0.89	0.94	0.99
36	1.13	1.81	2.49	3.16	3.84	4.52	5.20	5.88	6.55	7.23	7.91	8.59	9.27	9.94	10.62	11.30	11.98	12.66	13.33
0.91	0.11	0.17	0.23	0.29	0.36	0.42	0.48	0.55	0.61	0.67	0.74	0.80	0.86	0.92	0.99	1.05	1.11	1.18	1.24
42	1.55	2.47	3.40	4.33	5.26	6.19	7.11	8.04	8.97	9.90	10.83	11.75	12.68	13.61	14.54	15.47	16.39	17.32	18.25
1.07	0.14	0.23	0.32	0.40	0.49	0.58	0.66	0.75	0.83	0.92	1.01	1.09	1.18	1.27	1.35	1.44	1.52	1.61	1.70
48	1.78	2.84	3.91	4.97	6.04	7.10	8.17	9.24	10.30	11.37	12.43	13.50	14.56	15.63	16.69	17.76	18.83	19.89	20.96
1.22	0.17	0.26	0.36	0.46	0.56	0.66	0.76	0.86	0.96	1.06	1.16	1.26	1.35	1.45	1.55	1.65	1.75	1.85	1.95
54	2.01	3.21	4.41	5.62	6.82	8.02	9.22	10.43	11.63	12.83	14.04	15.24	16.44	17.65	18.85	20.05	21.26	22.46	23.66
1.37	0.19	0.30	0.41	0.52	0.63	0.75	0.86	0.97	1.08	1.19	1.31	1.42	1.53	1.64	1.75	1.87	1.98	2.09	2.20
60	2.33	3.58	4.92	6.26	7.60	8.94	10.28	11.62	12.96	14.30	15.64	16.98	18.33	19.67	21.01	22.35	23.69	25.03	26.37
1.52	0.21	0.33	0.46	0.58	0.71	0.83	0.96	1.08	1.21	1.33	1.45	1.58	1.70	1.83	1.95	2.08	2.20	2.33	2.45
66	2.46	3.94	5.42	6.90	8.38	9.86	11.34	12.81	14.29	15.77	17.25	18.73	20.21	21.68	23.16	24.64	26.12	27.60	29.08
1.68	0.23	0.37	0.50	0.64	0.78	0.92	1.05	1.19	1.33	1.47	1.60	1.74	1.88	2.02	2.15	2.29	2.43	2.57	2.70
72	2.69	4.31	5.93	7.54	9.16	10.77	12.39	14.01	15.62	17.24	18.85	20.47	22.09	23.70	25.32	26.94	28.55	30.17	31.78
1.83	0.25	0.40	0.55	0.70	0.85	1.00	1.15	1.30	1.45	1.60	1.75	1.90	2.05	2.20	2.35	2.50	2.66	2.81	2.96
78	2.92	4.68	6.43	8.18	9.94	11.69	13.45	15.20	16.95	18.71	20.46	22.21	23.97	25.72	27.48	29.23	30.98	32.74	34.49
1.98	0.27	0.43	0.60	0.76	0.92	1.09	1.25	1.41	1.58	1.74	1.90	2.07	2.23	2.39	2.56	2.72	2.88	3.04	3.21
84	3.15	5.04	6.94	8.83	10.72	12.61	14.50	16.39	18.28	20.17	22.07	23.96	25.85	27.74	29.63	31.52	33.41	35.31	37.20
2.13	0.29	0.47	0.64	0.82	1.00	1.17	1.35	1.52	1.70	1.88	2.05	2.23	2.40	2.58	2.76	2.93	3.11	3.28	3.46
90	3.38	5.41	7.44	9.47	11.50	13.53	15.56	17.58	19.61	21.64	23.67	25.70	27.73	29.76	31.79	33.82	35.85	37.87	39.90
2.29	0.31	0.50	0.69	0.88	1.07	1.26	1.45	1.64	1.82	2.01	2.20	2.39	2.58	2.77	2.96	3.14	3.33	3.52	3.71
96	3.61	5.78	7.94	10.11	12.28	14.44	16.61	18.78	20.94	23.11	25.28	27.44	29.61	31.78	33.94	36.11	38.28	40.44	42.61
2.44	0.34	0.54	0.74	0.94	1.14	1.34	1.54	1.75	1.95	2.15	2.35	2.55	2.75	2.96	3.16	3.36	3.56	3.76	3.96
102	4.03	6.44	8.86	11.28	13.69	16.11	18.53	20.94	23.36	25.78	28.19	30.61	33.03	35.44	37.86	40.28	42.69	45.11	47.53
2.59	0.37	0.60	0.82	1.05	1.27	1.50	1.72	1.95	2.17	2.40	2.62	2.85	3.07	3.30	3.52	3.75	3.97	4.20	4.42
108	4.26	6.81	9.37	11.92	14.47	17.03	19.58	22.14	24.69	27.25	29.80	32.35	34.91	37.46	40.02	42.57	45.13	47.68	50.23
2.74	0.40	0.63	0.87	1.11	1.35	1.58	1.82	2.06	2.30	2.53	2.77	3.01	3.25	3.48	3.72	3.96	4.20	4.43	4.67
114	4.49	7.18	9.87	12.56	15.25	17.95	20.64	23.33	26.02	28.71	31.41	34.10	36.79	39.48	42.17	44.86	47.56	50.25	52.94
2.90	0.42	0.67	0.92	1.17	1.42	1.67	1.92	2.17	2.42	2.67	2.92	3.17	3.42	3.67	3.92	4.17	4.42	4.67	4.92
120	4.72	7.55	10.37	13.20	16.03	18.86	21.69	24.52	27.35	30.18	33.01	35.84	38.67	41.50	44.33	47.16	49.99	52.82	55.65
3.05	0.44	0.70	0.96	1.23	1.49	1.75	2.02	2.28	2.54	2.81	3.07	3.33	3.60	3.86	4.12	4.39	4.65	4.91	5.18

PRESSURE DROP



Rating do not include the effect of a bird screen.

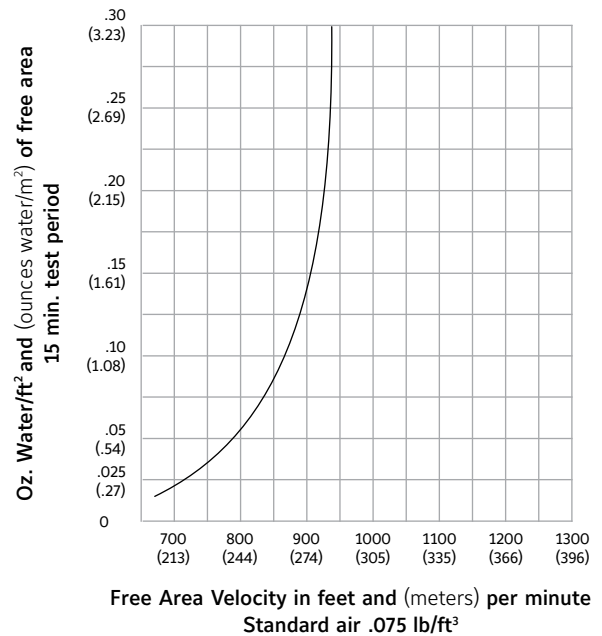
Air Velocity in feet and (meters) per minute through Free Area

PERFORMANCE DATA

AMCA Standard 500 provides a reasonable basis for testing and rating louvers. Testing to AMCA 500 is performed under a certain set of laboratory conditions. This does not guarantee that other conditions will not occur in the actual environment where louvers must operate.

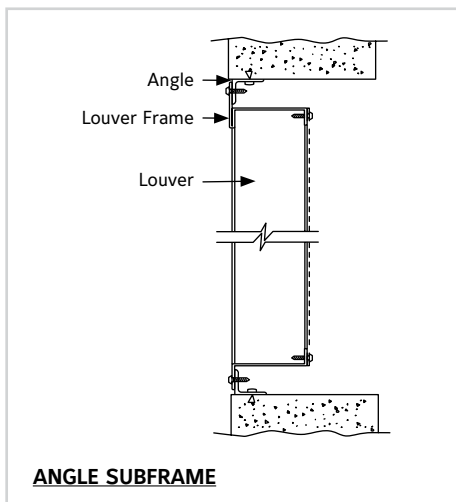
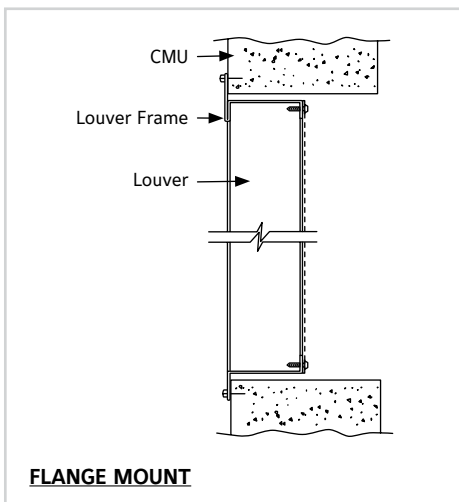
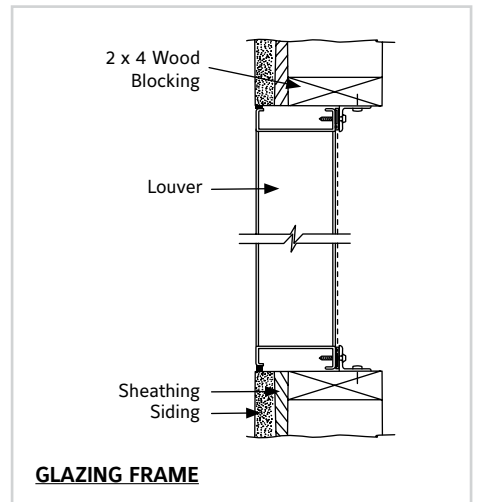
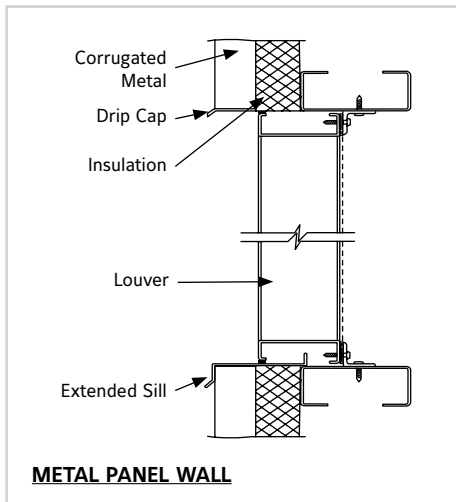
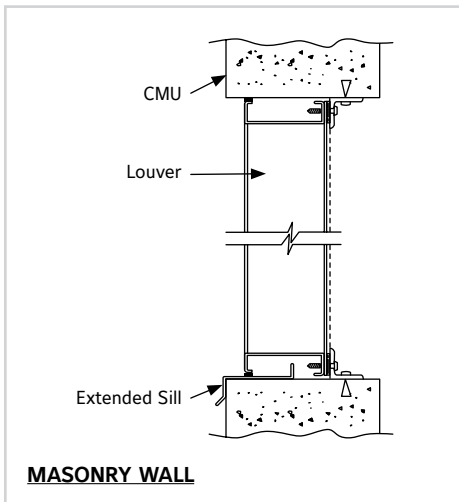
Designs should provide a reasonable safety factor for louver performance by selecting at some point below pressure drop or water penetration system requirements.

Water Penetration
 Test size 48" wide X 48" high (1219 X 1219)
 Beginning point of water penetration at .01 oz. /sq. ft. is
 668 fpm (204 m/min).



Free Area Velocity in feet and (meters) per minute
 Standard air .075 lb/ft³

TYPICAL INSTALLATION DETAILS



Accessories at additional cost.

SUGGESTED SPECIFICATION

Furnish and install louvers as hereinafter specified where shown on plans or as described in schedules. Louvers shall be stationary type entirely contained within a 6" (152) frame. Louver components (heads, jambs, sills, blades & mullions) shall be factory assembled by the louver manufacturer. Louver sizes too large for shipping shall be built up by the contractor from factory assembled louver sections to provide overall sizes required. Louver design shall incorporate structural supports required to withstand a wind load of 30 lbs. per sq. ft. (1.44kPa) equivalent of a 110 mph wind - specifier may substitute any loading required).

Louvers shall be Ruskin Model L6811S construction as follows:

- Frame: 20 gage (.9) galvanized steel channel.
- Blades: 20 gage (.9) galvanized steel at 45 angle on 6 11/16" (170) centers.
- Screen: 1/2" mesh x 19 gage (13 x 1.1) galvanized steel in removable frame.
- Finish: Select finish specification from Ruskin Finishes Brochure.

i LINKS TO IMPORTANT DOCUMENTS

Document Title
Paint Finishes and Color Guide
Limited Warranty Document



3900 Doctor Greaves Road
Grandview, MO 64030
Website: www.ruskin.com
Phone: (816) 761-7476