

RUSKIN®



Replacement Parts Catalog

Table of Contents

This catalog offers Damper customers an easy to use buying guide for miscellaneous Ruskin Damper parts. The Damper part prices in this catalog do include freight within the contiguous 48 states. Please refer to the table of contents below to determine where to find complete details on products, pricing, and ordering. If the part you need is not found on the following pages, please call Ruskin at 816-761-7476 or your local Ruskin representative for additional information.

Miscellaneous Parts	3
Jackshaft Assembly (Detail Drawing)	4
Jackshaft Parts Descriptions & List Prices	5
Jackshaft Parts Miscellaneous	6
Jackshaft Kits	7
Fuse Link Accessories	8
Miscellaneous Blade Seal Pricing	10
Motor Bracket Prices	11
Blade Position Indicators	12
Economizer Controls	13

PLEASE CONTACT RUSKIN OR YOUR LOCAL RUSKIN REPRESENTATIVE FOR DISCOUNT MULTIPLIER INFORMATION.

ATTENTION: A \$35.00 net handling charge will be added to each order totaling less than \$50.00 net.

The performance specifications are nominal and conform to acceptable industry standards. For applications at conditions beyond these specifications, consult the local Ruskin representative. Ruskin Company shall not be liable for damages resulting from misapplication or misuse of its products.

**All stated specifications are subject to change without notice or obligation.*

Miscellaneous Parts

MODEL – ESS375



3/8" Square x 3-1/2" Long
Extended Shaft with Spring Clip

MODEL – ESR050



Extended Shaft
1/2" Diameter x 6" Long

MODEL – OBSB050



Outboard Support Bracket
for Extended Shaft

MODEL – OBSB050B



Outboard Support Bracket
with Bearing for Extended Shaft

MODEL – OBSB0502



2" Deep Outboard Support
Bracket for Extended Shaft

MODEL – SC2532



Spring Clip for Extended Shaft

MODEL – ESK050



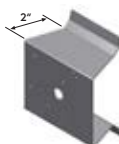
Extended Shaft Kit Includes:
ESR050, OBSB050, SC2532

MODEL – ESK050B



Extended Shaft Kit
with Bearing Includes:
ESR050, OBSB050B, SC2532

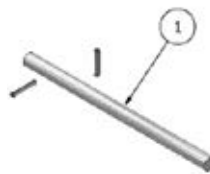
MODEL – CDRST0B2



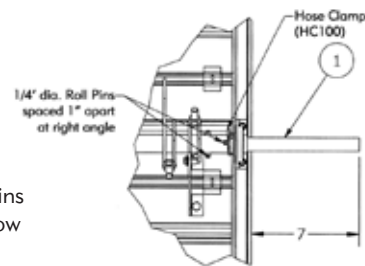
2" Stand Off Bracket
for Round Dampers

*All stated specifications are subject to change without notice or obligation.

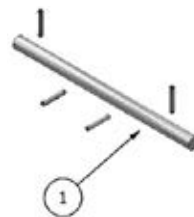
MODEL – JSA075E



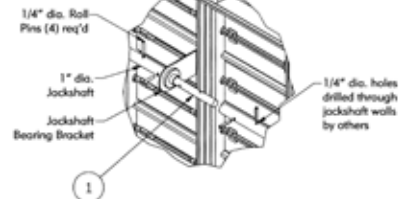
Jackshaft Extension
3/4" Diameter x 12" Long
Solid Bar Includes 2 Roll Pins
Used for 1" Diameter Hollow
Jackshafts Only
(Holes drilled in field by others)



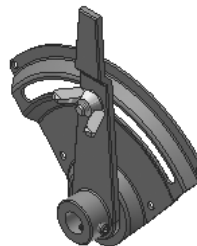
MODEL – JSA075S



Jackshaft Splice
3/4" Diameter x 12" Long
Solid Bar Includes 4 Roll Pins
(Holes drilled in field by others)



MODEL – HQR050



Galvanized Steel Hand Quadrant
for 1/2" Diameter Shaft

MODEL – HQRSS050

Stainless Steel Hand Quadrant
for 1/2" Diameter Shaft

MODEL – HDHQ050

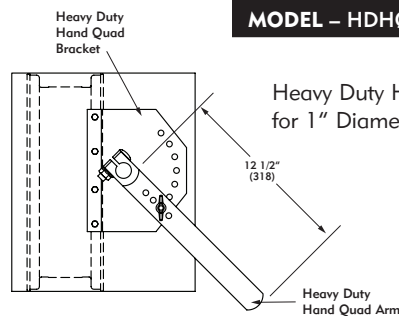
Heavy Duty Hand Quad Arm for 1/2" Diameter Shaft

MODEL – HDHQ075

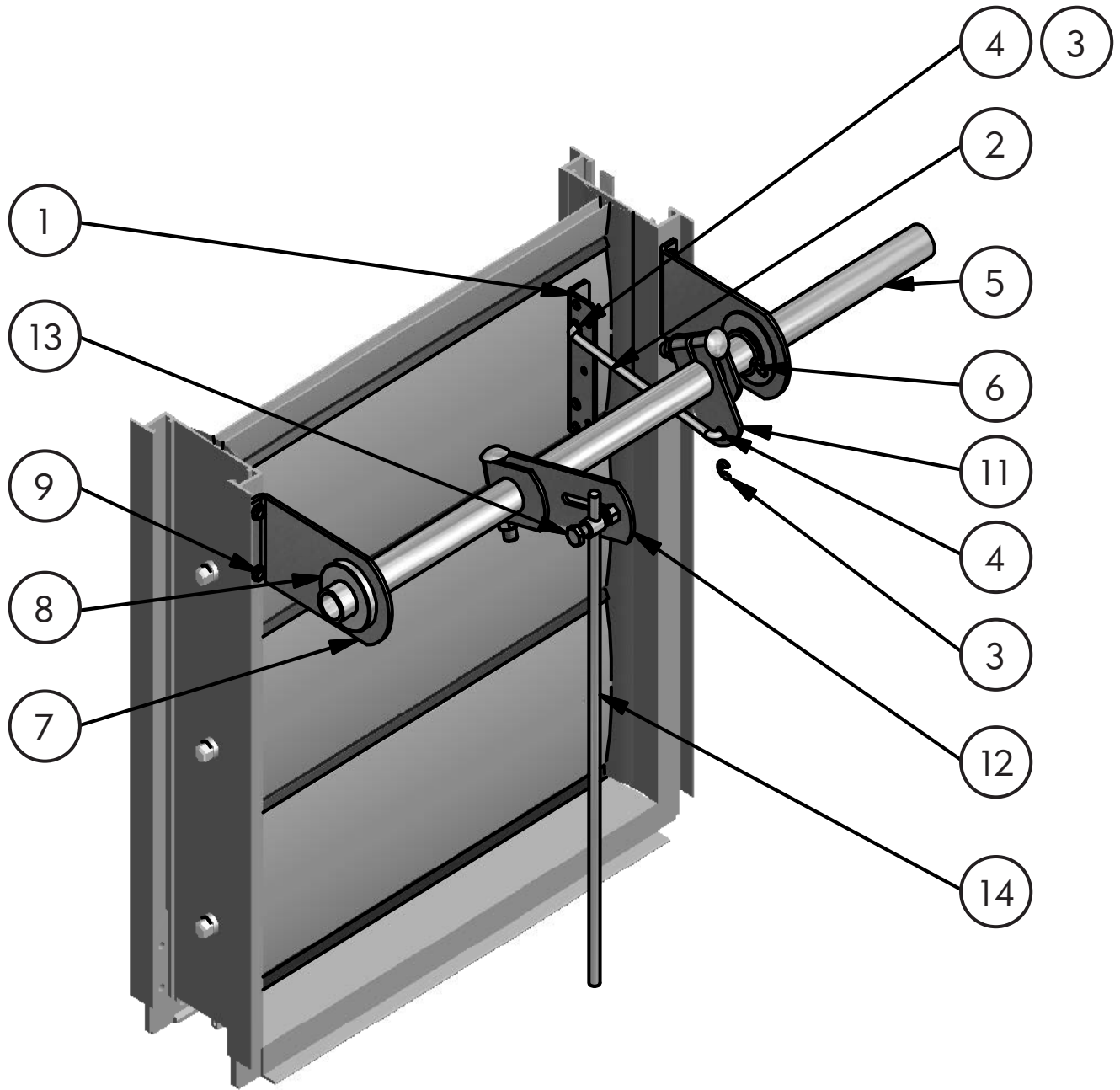
Heavy Duty Hand Quad Arm
for 3/4" Diameter Shaft

MODEL – HDHQ100

Heavy Duty Hand Quad Arm
for 1" Diameter Shaft



Jackshaft Assembly



**All stated specifications are subject to change without notice or obligation.*

Jackshaft Parts for Field Installation

DES	PART #	DESCRIPTION
1a	3VGBB	Triple V-Groove Blade Bracket (CD35, 36, 44, 45, 46 & 51)
1b	AFLBB	Airfoil Blade Bracket (CD50 & CD60)
2a	TR2393	Tie Rod
2b	TR20013	* Tie Rod 5.92" Long
3	E-25	Roto Clip (Minimum order of 25 when not purchased as a Jackshaft Kit)
4	NL4L2FF	Nyliner 4L2-FF (Minimum order of 25 when not purchased as a Jackshaft Kit)
—	3VGBBASY	Triple V-Groove Blade Bracket Assembly: Includes 1a thru 4 above
—	AFLBBASY	Airfoil Blade Bracket Assembly: Includes 1b thru 4 above
5a	JS050	Jackshaft 1/2" Diameter
5b	JS100	Jackshaft 1" Diameter
6a	HC050	Hose Clamp 1/2" Diameter Jackshaft HC8 (Minimum order of 25 when not purchased as a Jackshaft Kit)
6b	HC100	Hose Clamp 1" Diameter Jackshaft HC16 (Minimum order of 25 when not purchased as a Jackshaft Kit)
7a	JSBB05S	Jackshaft Bearing Bracket 1/2" Short (2-1/8" to centerline of jackshaft)
7b	JSBB05T	Jackshaft Bearing Bracket 1/2" Tall (3-3/4" to centerline of jackshaft)
7c	JSBB10S	Jackshaft Bearing Bracket 1" Short (2-1/8" to centerline of jackshaft)
7d	JSBB10T	* Jackshaft Bearing Bracket 1" Tall (3-3/4" to centerline of jackshaft)
7e	JSBB10ET	Jackshaft Bearing Bracket 1" Extra Tall (6" to centerline of jackshaft)
8a	KB050	Kendale Bearing 1/2" Diameter
8b	KB100	Kendale Bearing 1" Diameter
9	10TEKS	#10 – 16 x 3/4" Large TEK Screws (Minimum order of 25)
10	NFBN5389	Nylon Flange Bearing N5389 used only on triple v-groove blades without add on blade bracket (Minimum order of 25 when not purchased as a Jackshaft Kit)
11a	050LCA	1/2" Diameter Linkage Control Arm Assembly (Includes #10 above)
11b	100LCA	1" Diameter Linkage Control Arm Assembly (Includes #10 above)
12a	CA050	Crank Arm Slotted for 1/2" Diameter Jackshaft
12b	CA075	Crank Arm for 3/4" Diameter Jackshaft Adaptor
12c	CA100	Crank Arm Slotted for 1" Diameter Jackshaft
13a	BJ312	Balljoint for 5/16" Diameter Pushrod
13b	BJ375	Balljoint for 3/8" Diameter Pushrod
14a	PR312`	Pushrod 5/16" Diameter
14b	PR375	Pushrod 3/8" Diameter

*These parts are to be used on jackshafts for direct/internally mounted actuators with 1" Diameter jackshafts.

*All stated specifications are subject to change without notice or obligation.

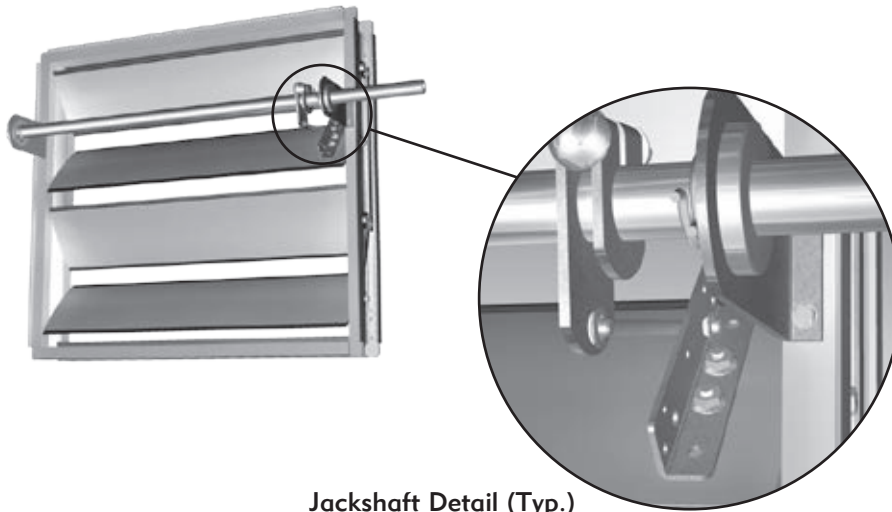
Miscellaneous Jackshaft Parts

1a	3VGBB	1b	AFLBB	2a	TR2393 4.97" Long	2b	TR20013 5.92" Long	3	E25
4	NL4L2FF	—	3VGBBASY	—	AFLBBASY	5a	JS050 1/2" Diameter	5b	JS100 1" Diameter
6a	HC050 1/2" Diameter	6b	HC100 1" Diameter	7a	JSBB05S 2-1/8	7b	JSBB05T 3-3/4	7c	JSBB10S 2-1/8
7d	JSBB10T 3-3/4	7e	JSBB10ET 6	8a	KB050 1/2" Diameter	8b	KB100 1" Diameter	9	10TEKS
10	NFBN5389	11a	050LCA	11b	100LCA	12a	CA050	12b	CA075
12c	CA100	13a	BJ312 For 5/16" Diameter Rod	13b	BJ375 For 3/8" Diameter Rod	14a	PR312 5/16" Diameter Rod	14b	PR375 3/8" Diameter Rod

*All stated specifications are subject to change without notice or obligation.

Jackshaft Kits

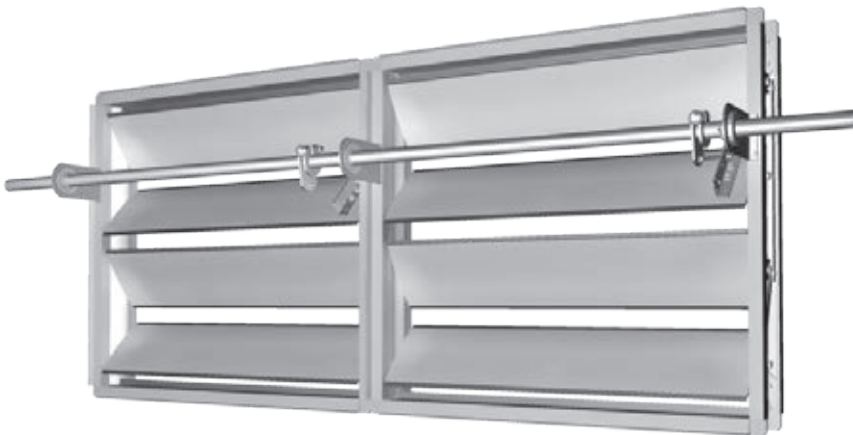
JS1X1 Jackshaft Kit



JS1X1 3VG 1/2" DIA
JS1X1 AFL 1/2" DIA
JS1X1 3VG 1" DIA
JS1X1 AFL 1" DIA
Jackshaft is 66" long

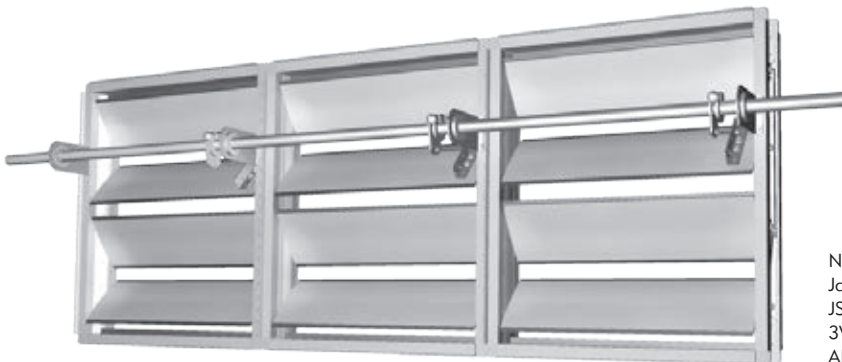
Jackshaft Detail (Typ.)

JS2X1 Jackshaft Kit



JS2X1 3VG 1/2" DIA
JS2X1 AFL 1/2" DIA
JS2X1 3VG 1" DIA
JS2X1 AFL 1" DIA
Jackshaft is 108" long

JS3X1 Jackshaft Kit



JS3X1 3VG 1" DIA
JS3X1 AFL 1" DIA

Note:
Jackshaft is 156" long
JS3X1 kit not available with 1/2' diameter jackshaft.
3VG = Tipple V-Groove Blade Damper (CD36)
AFL= Air Foil Blade Damper (CD60)

*All stated specifications are subject to change without notice or obligation.

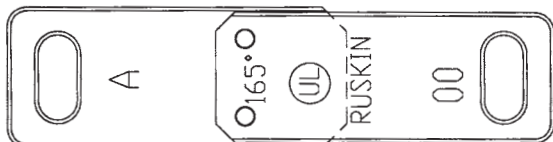
Fuse Link Accessories

Fuse Link Accessories for IBD, CFD, FD, and FSD Models

FUSE LINK — Specify 165°F, 212°F, or 285°F (74°C, 100°C or 141°C)

MODEL – FLIA***

Issue A Link
All (D)IBD Curtain Type Fire Dampers
Excluding IBDT Series



MODEL – FLIJ***

J Link
All CFD Ceiling Fire Dampers
All PFL's (Pneumatic Fuse Links)



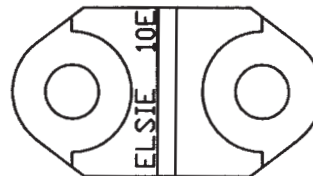
MODEL – FLIB***

Issue B Link
For IBDT Curtain Type Fire Dampers
For FDR25 Round Fire Dampers
Also may be used as a replacement
on CFD Ceiling Fire Dampers



MODEL – FLIE***

Issue E Link
FD35 and FD36
Multiple Blade Fire Dampers

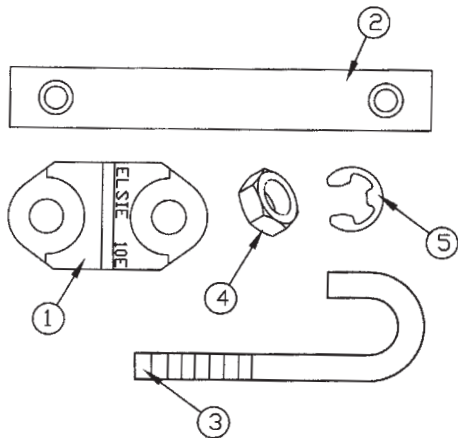


FUSE LINK — Specify 165°F, 212°F, or 285°F (74°C, 100°C or 141°C)

MODEL – FDLA***

FD Fuse Link Assembly

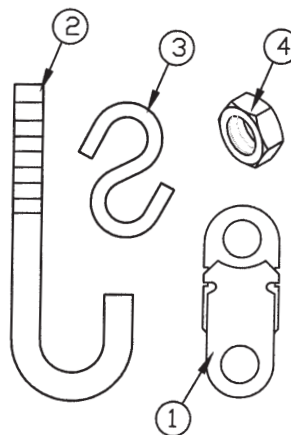
1. Issue 'E' Fuse Link
2. Link Bar
3. (2) 'S' Hooks
4. (2) 1/4-20 Nuts
5. (2) 'E' Clips



MODEL – FDLA***

FDR Fuse Link Assembly

1. Issue 'B' Fuse Link
2. 'J' Bolt
3. (2) 'S' Hooks
4. (2) 1/4-20 Nuts



*** = Temperature 165°F, 212°F, or 285°F. Temperature must be provided when ordering. EX: FDLA 165

*All stated specifications are subject to change without notice or obligation.

Fuse Link Accessories

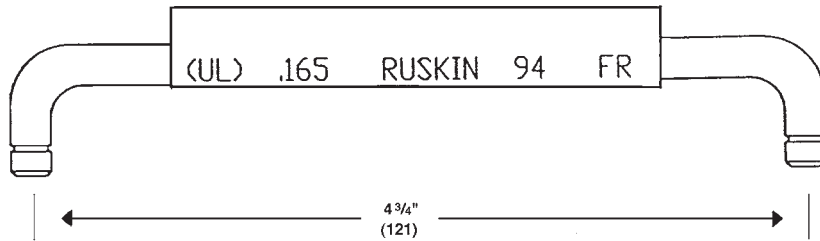
Fuse Link Accessories for IBD, CFD, FD, and FSD Models

4935 FUSIBLE ROD (NO LONGER USED)

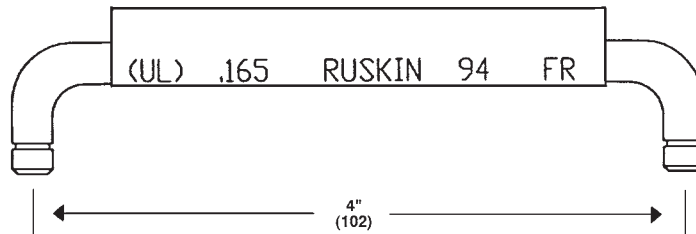
Specify 165°F or 212°F (74°C or 100°C) for all FSD Series Combination Fire Smoke Damper models (excluding FSDR25) manufactured prior to 1996

Refer to EFL or PFL spec sheets for dampers manufactured after 1996.

MODEL – FR49354***



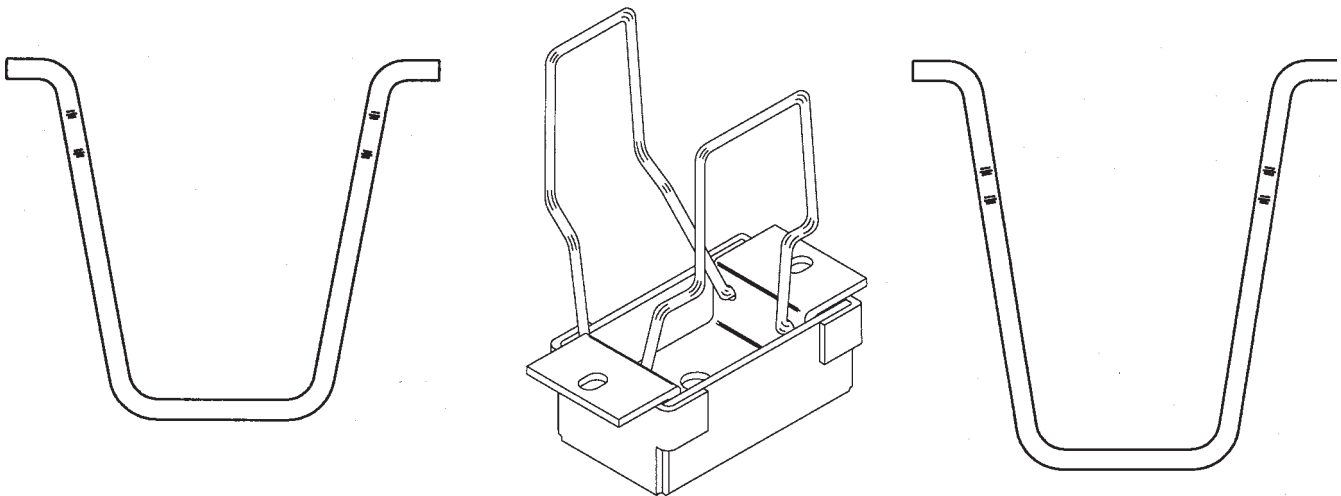
MODEL – FR49354***



VOLUME ADJUST

Specify 165°F or 212°F (74°C or 100°C) option for all Ceiling Fire Dampers (CFD's)

MODEL – VOLADJ***



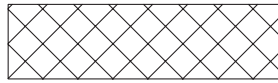
Lift arms are shown actual size.

*** = Temperature 165°F, 212°F, or 285°F. Temperature must be provided when ordering. EX: FR49354 285

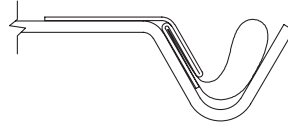
*All stated specifications are subject to change without notice or obligation.

Miscellaneous Blade Seals

Blade Seals & Blade Stop Replacements



AA



A



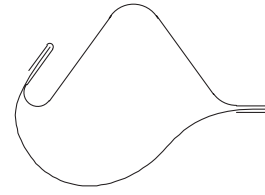
B



C



D



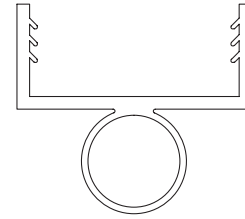
E



F



G



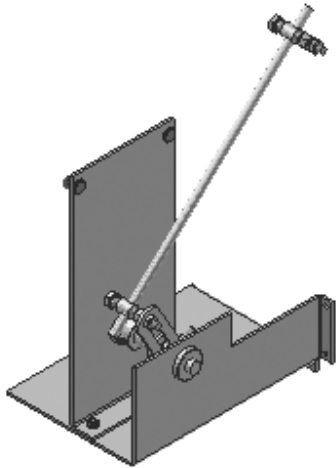
I

DESIGNATION	RUSKIN PART #	DESCRIPTION
AA	POLY 35	3/16" X 1/2" Polyurethane Foam Seals for CD45 and CD35
AA	NEOP35	3/16" X 1/2" Neoprene Seals for CD45 and CD35
A	PVC36	PVC Coated Fiberglass Seal for CD46 and CD36
E	SIL36	Silicone Coated Fiberglass Seal for CD46, CD36
C	SANPBOB60	Santoprene for Parallel and Opposed Bladed CD60
C	SILPBOB60	Silicone for Parallel and Opposed Blade CD60
F	SANBS6050	Santoprene Blade Stop for CD60, CD50, CD40, CD40X2
C	SANPBOB50	Santoprene for Parallel and Opposed Bladed CD50, 40 and 40X2
D	SANPBOBT150	Santoprene for Parallel and Opposed Blade CDT150/BF
B	SANBST150	Santoprene Blade Stop Seal for CDT150/BF
I	VNLTRIMT150	Vinyl Trim Blade Seal for CDT150/BF
C	SILPBOB50	Silicone Parallel and Opposed Blade CD50
B	SILBS50	Silicone Blade Stop Seal for CD50
G	SILFSD60	Blade Stop for Opp & Par CD60 w/Silicone Seals

*All stated specifications are subject to change without notice or obligation.

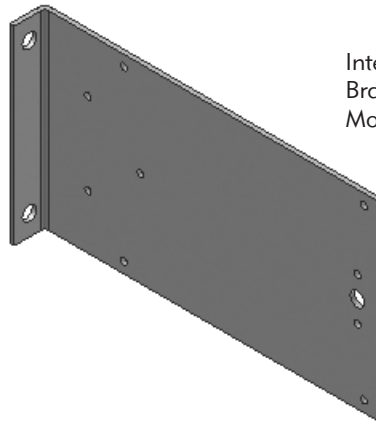
Actuator Brackets

MODEL – MBH2000IN



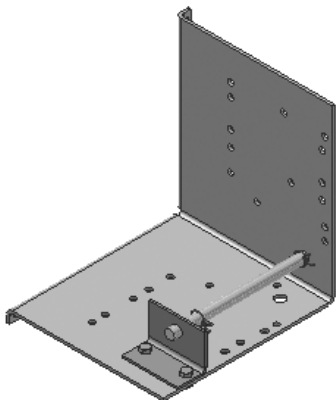
Internal Mount
Bracket for:
H2000, H2024,
MS8209, MS4209
Actuators

MODEL – MBBELGAIN



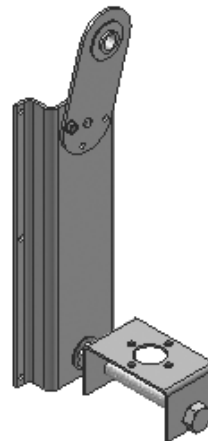
Internal Mount
Bracket for Direct
Mount Actuators

MODEL – UMBPIN



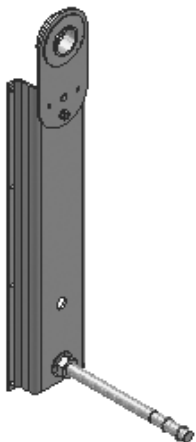
Internal Mount
Bracket for: 331-4827,
331-2961, 331-3060
Pneumatic Actuators

MODEL – MBP4827OUT



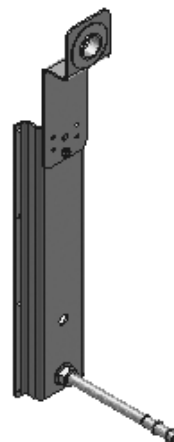
External Mount
Bracket for: 331-4827
Pneumatic Actuators

MODEL – MBP2961OUT



External Mount
Bracket for: 331-2961
Pneumatic Actuator

MODEL – MBP3060OUT

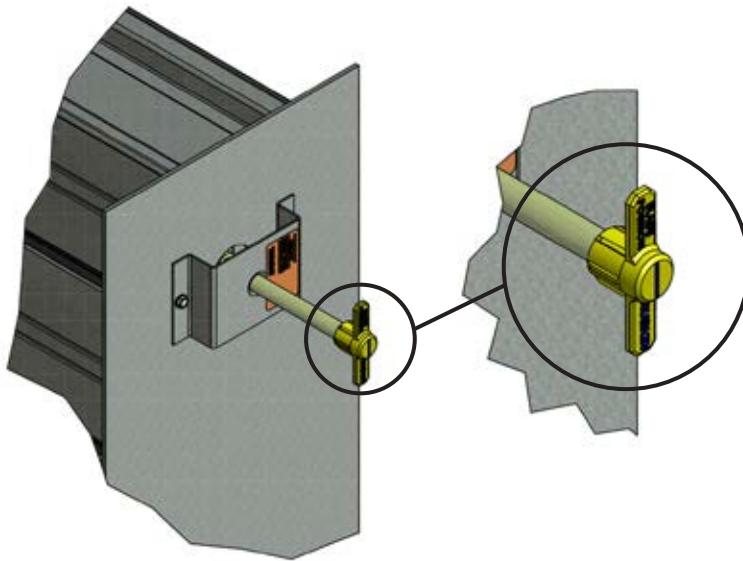


External Mount
Bracket for: 331-3060
Pneumatic Actuator

**All stated specifications are subject to change without notice or obligation.*

Blade Position Indicators

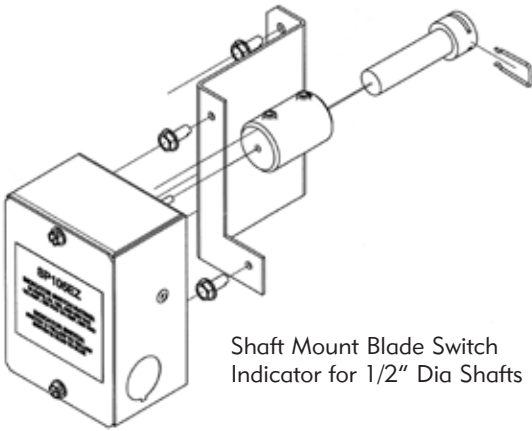
MODEL – RBPI100



Ruskin Blade Position Indicator
Fits on 1/2" Dia, 3/8" Sq
and 1" Dia Shafts

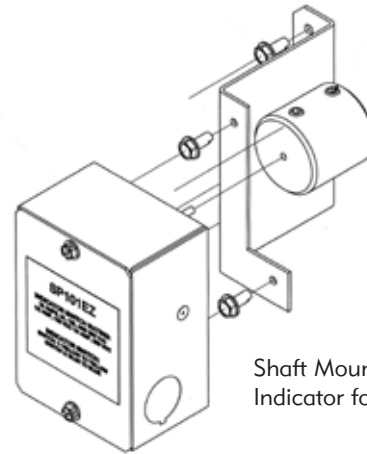


MODEL – SP105



Shaft Mount Blade Switch
Indicator for 1/2" Dia Shafts

MODEL – SP101



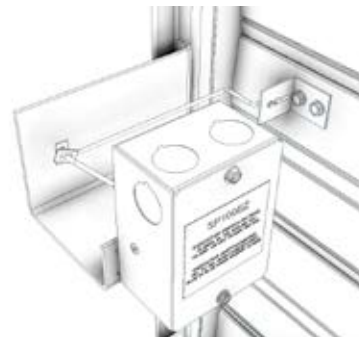
Shaft Mount Blade Switch
Indicator for 1" Dia Shafts

MODEL – SP100EZ



Blade Mount
Switch Indicator
(Switch Only)

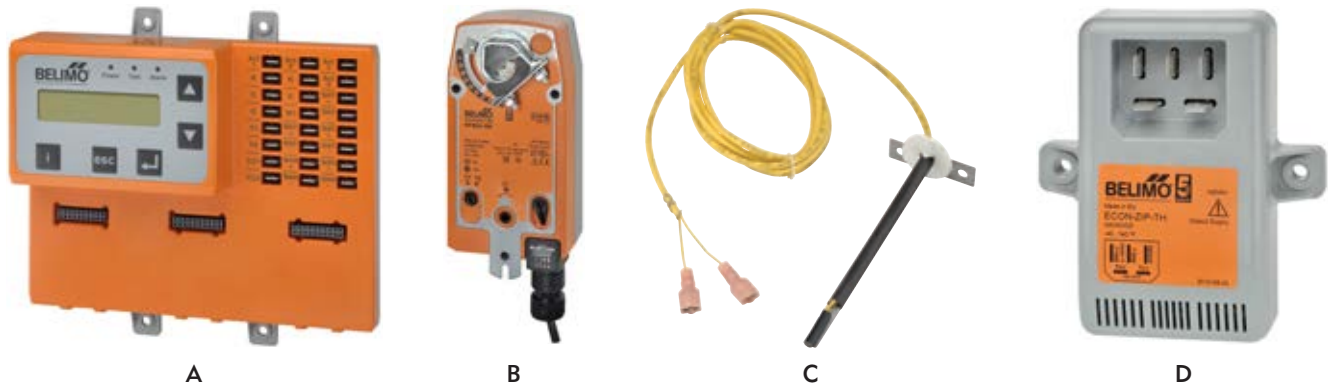
MODEL – SP100FK



Blade Mount
Switch Indicator
Kit w/Brackets
and Hardware

*All stated specifications are subject to change without notice or obligation.

Economizer Controls



The pictures above represent the standard replacement parts for Ruskin model CD60ECON Economizer. The CD60ECON controls are provided by Belimo to Ruskin specifications and are modular in design, facilitating a “plug and play” installation. The economizer control logic board (A) includes an extended temperature LCD display, with on board help, providing information through every step of the setup process. Through automated fault detection and diagnostics, the logic board troubleshoots faults, initiates alarms, and reconfigures for best operation. The standard economizer control package provides the most common economizer functions; two stages of mechanical cooling, integrated cooling, four change-over strategies for free cooling, and damper position feedback. Ruskin furnishes and mounts actuators (B) specific to the application and factory commissioning is performed prior to shipping. It is paramount that the CD60ECON actuators are replaced with the same “RUS” series model. Likewise, the enthalpy sensor (D) and temperature sensor (C) complete the package and should be replaced with the same parts. If the CD60ECON is ordered with the standard dry bulb sensors (C) and it becomes necessary to use a single or dual enthalpy control strategy, contact Ruskin for support prior to ordering replacement parts.

MODEL	SYMBOL	DESCRIPTION
ECON-LB	A	Economizer control logic board
LF24SR-RUS	B1	Economizer actuator damper area up to 6 sq. ft.
NFB24-SR-RUS	B2	Economizer actuator damper area up to 18.5 sq. ft.
AFB24-SR-RUS	B3	Economizer actuator damper area up to 30 sq. ft.
ECON-DBS	C	O.A., R.A., and S.A. 10K Temperature Sensor
ECON-ES	D	O.A., and R.A. Enthalpy sensor

Parts required for dry bulb control sequence

(Item A) Economizer control logic board, (item B) “RUS” series SR actuator (exact model and quantity based on damper area), and 3 (item C) 10K temperature sensors. Locate one sensor in the O.A., one in the R.A. flow and one in the mixed supply air location.

Parts required for single enthalpy control sequence

(Item A) Economizer control logic board, (item B) “RUS” series SR actuator (exact model and quantity based on damper area), 1 (item D) Enthalpy sensor (located at O.A. location) and 1 (item C) 10K temperature sensor located in the mixed supply air location.

Parts required for dual enthalpy control sequence

(Item A) Economizer control logic board, (item B) “RUS” series SR actuator (exact model and quantity based on damper area), 2 (item D) Enthalpy sensors (one at O.A. location and one at R.A. location) and 1 (item C) 10K temperature sensor located in the mixed supply air location.

**All stated specifications are subject to change without notice or obligation.*

RUSKIN[®]

Air & Sound Control
Specified by Many – Equaled by None

3900 Dr. Greaves Rd., Kansas City, MO 64030
(816) 761-7476 Fax (816) 765-8955
Email: ruskin@ruskin.com