



**RUS-L120(-S) Electric 120 Volt Control Damper & Louver Actuator  
DIRECT COUPLED SPRING RETURN**

**DESCRIPTION**

Ruskin model RUS-L120(-S) electric On/Off spring return actuator designed for factory mounting on dampers and operable louvers. Actuators can be mounted directly to a damper or louver shaft from 3/4 to 1 1/16 inch (19 to 27 mm) diameter with a universal clamp. An optional line voltage auxiliary switch indicates an end-stop position or performs switching functions within the field selected 0° to 95° rotation range.

**FEATURES**

- Designed specifically to operate damper and operable louver applications up to the square footage face area listed below.
- Reversible mounting design simplifies installation and enables the actuator to be spring return in either direction.
- Electronic stall detection through entire rotation range extends life by deactivating the motor when an overload condition is detected.
- 5 Year factory warranty



**RUS-L120(-S) Electric Spring-Return Actuator**

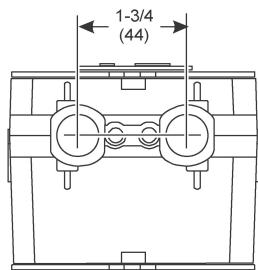
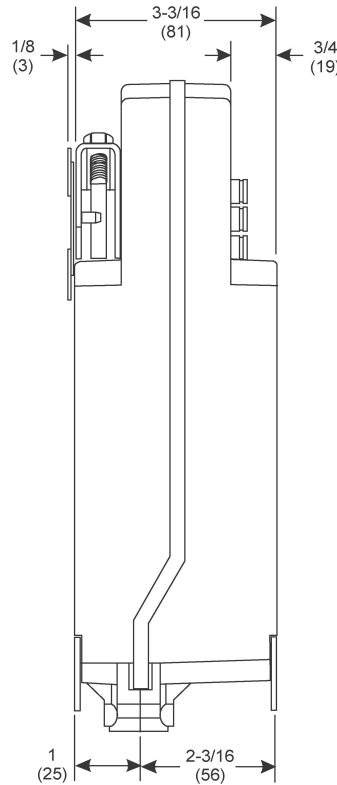
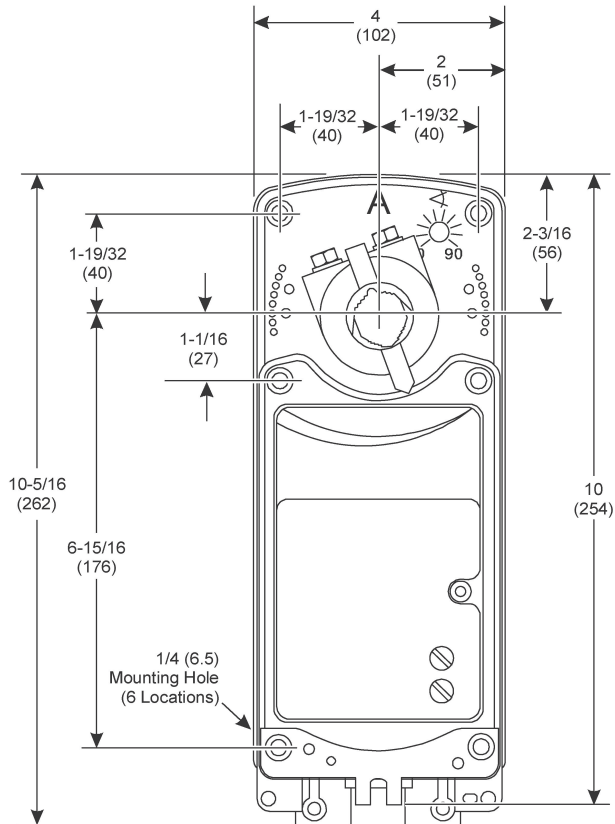
TECHNICAL INFORMATION	
<b>COMMERCIAL DAMPER FACE AREA*</b>	35 sq. ft. with seals 70 sq. ft. without seals
<b>LOUVER FACE AREA</b>	50 sq. ft. with seals 75 sq. ft. without seals
<b>INDUSTRIAL DAMPERS</b>	Dependent on model and system conditions (Consult Ruskin)
<b>RUNNING TIME</b>	Drive: 24 to 57 sec Spring: < 15 sec
<b>POWER SUPPLY</b>	AC 120 V (AC 102 V to 132 V) at 50/60 Hz
<b>POWER CONSUMPTION</b>	Running .25 amps Holding .13 amps
<b>TRANSFORMER SIZE</b>	25 VA
<b>DIRECTION OF ROTATION</b>	Reversible with cw/ccw mounting
<b>POSITION INDICATION</b>	Visual indication 0° to 95°
<b>OPTIONAL AUXILIARY SWITCH (-S Models)</b>	2 ea - SPDT 50 VA @ 24 V 5.8 A @ 120 V, 1/4 hp, 275 VA Pilot Duty 5.0A @ 240 V, 1/4 hp, 275 VA Pilot Duty
<b>ELECTRICAL PROTECTION</b>	Double insulated
<b>ELECTRICAL CONNECTION</b>	3 ft, 18 ga appliance cable (-S models have 2 cables) 1/2" conduit connector
<b>OVERLOAD PROTECTION</b>	Electronic throughout 0° to 95° rotation
<b>ROTATION PROTECTION</b>	Max 95° adjust. with mechanical stop (optional)
<b>HOUSING</b>	NEMA 2 (IP54) Aluminum
<b>HUMIDITY</b>	5 to 90% non-condensing

\*Consult Ruskin for proper actuator sizing on TED50 series dampers

TECHNICAL INFORMATION	
<b>AMBIENT TEMPERATURE</b>	-40° to 131°F (-40° to 55°C)
<b>STORAGE TEMPERATURE</b>	-85° to 185°F (-65° to 85°C)
<b>AGENCY LISTINGS</b>	UL 60730-1A: 2003-08 UL 60730-2-14: 2002-02 UL 2043 C22.2 No. 24-93
<b>NOISE LEVEL AT APPROX. 40" DISTANCE</b>	Drive: <66 dba    Holding: <18 dba Spring: <66 dba
<b>WEIGHT</b>	RUS-L120: 7.6 lb (3.5 kg) RUS-L120-S: 8.0 lb (3.6 kg)
<b>SERVICING</b>	Maintenance free
<b>QUALITY STANDARD</b>	ISO 9001

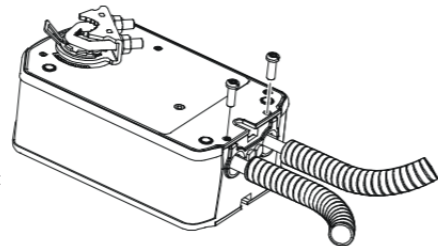
ACCESSORY	
<b>ADJUSTABLE END STOP KIT</b>	Part #M9220-603 From 35° to 95° in 5° increments
<b>SMALLER SHAFT COUPLER</b>	Part #M9220-601 1/2 to 3/4 in. or 12 to 19 mm Round Shafts, or 3/8 and 1/2 in. or 10, 12, and 19 mm Square Shafts
<b>WEATHER SHIELDS</b>	Part #M9000-320 NEMA3R, IP32 OR Part #M9000-340 NEMA 5, IP54 impact-grade plastic enclosure with UV inhibitors to extend life

# DIMENSIONS

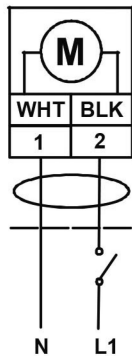


## CONDUIT CONNECTION

Integral connectors for 3/8 in. (10mm) flexible metal conduit



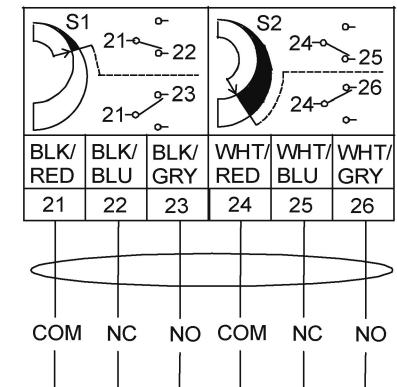
# WIRING



120 V AC Wiring Diagrams

## Auxiliary Switches

The RUS models include two integral auxiliary switches with a switch adjuster accessible on either face of the actuator. The nominal factory setting for Auxiliary Switch No. 1 is 11° closing, and the nominal factory setting for Auxiliary Switch No. 2 is 81° opening (relative to a 0 to 90° rotation range).



Auxiliary Switch Wiring Diagram



3900 Dr. Greaves Rd.  
 Kansas City, MO 64030  
 (816) 761-7476  
 FAX (816) 765-8955  
 www.ruskin.com